

Product datasheet

Anti-RBP1 antibody ab104452

★★★★★ [1 Abreviews](#) [4 Images](#)

Overview

| | |
|----------------------------|--|
| Product name | Anti-RBP1 antibody |
| Description | Goat polyclonal to RBP1 |
| Host species | Goat |
| Tested applications | Suitable for: WB, IHC-P |
| Species reactivity | Reacts with: Mouse, Human |
| Immunogen | Synthetic peptide: VEGVVCKQVFKKVQ conjugated to KLH, corresponding to C terminal amino acids 122-135 of Human RBP1. Run BLAST with Run BLAST with |

General notes

The Life Science industry has been in the grips of a reproducibility crisis for a number of years. Abcam is leading the way in addressing this with our range of recombinant monoclonal antibodies and knockout edited cell lines for gold-standard validation. Please check that this product meets your needs before purchasing.

If you have any questions, special requirements or concerns, please send us an inquiry and/or contact our Support team ahead of purchase. Recommended alternatives for this product can be found below, along with publications, customer reviews and Q&As

Properties

| | |
|-----------------------------|--|
| Form | Liquid |
| Storage instructions | Shipped at 4°C. Store at +4°C short term (1-2 weeks). Upon delivery aliquot. Store at -20°C long term. |
| Storage buffer | pH: 7.30 Preservative: 0.02% Sodium azide Constituents: 0.5% BSA, Tris buffered saline |
| Purity | Immunogen affinity purified |
| Clonality | Polyclonal |
| Isotype | IgG |

Applications

The Abpromise guarantee

Our **Abpromise guarantee** covers the use of ab104452 in the following tested applications.

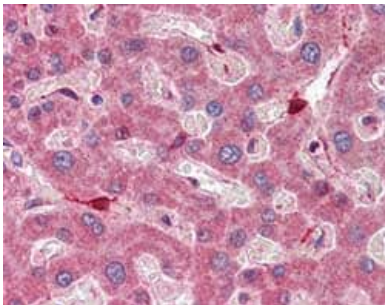
The application notes include recommended starting dilutions; optimal dilutions/concentrations should be determined by the end user.

| Application | Abreviews | Notes |
|-------------|-----------|--|
| WB | | Use a concentration of 0.1 - 0.3 µg/ml. Predicted molecular weight: 16 kDa. |
| IHC-P | ★★★★★ (1) | Use a concentration of 5 µg/ml. Perform heat mediated antigen retrieval with citrate buffer pH 6 before commencing with IHC staining protocol. |

Target

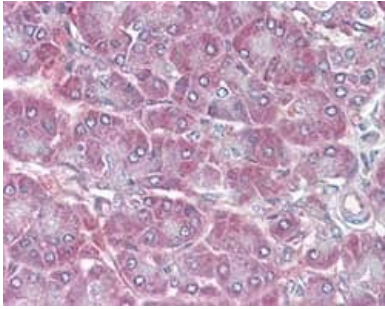
| | |
|-----------------------|---|
| Function | Intracellular transport of retinol. |
| Tissue specificity | Detected in nearly all the tissues with higher expression in adult ovary, pancreas, pituitary gland and adrenal gland, and fetal liver. |
| Sequence similarities | Belongs to the calycin superfamily. Fatty-acid binding protein (FABP) family. |
| Domain | Forms a beta-barrel structure that accommodates hydrophobic ligands in its interior. |
| Cellular localization | Cytoplasm. |

Images



ab104452, at 5 µg/ml, staining RBP1 in formalin-fixed, paraffin-embedded Human Liver by Immunohistochemistry, followed by biotinylated anti-goat IgG secondary antibody, alkaline phosphatase-streptavidin and chromogen.

Immunohistochemistry (Formalin/PFA-fixed paraffin-embedded sections) - Anti-RBP1 antibody (ab104452)



Immunohistochemistry (Formalin/PFA-fixed paraffin-embedded sections) - Anti-RBP1 antibody (ab104452)

ab104452, at 5 µg/ml, staining RBP1 in formalin-fixed, paraffin-embedded Human Pancreas by Immunohistochemistry, followed by biotinylated anti-goat IgG secondary antibody, alkaline phosphatase-streptavidin and chromogen.



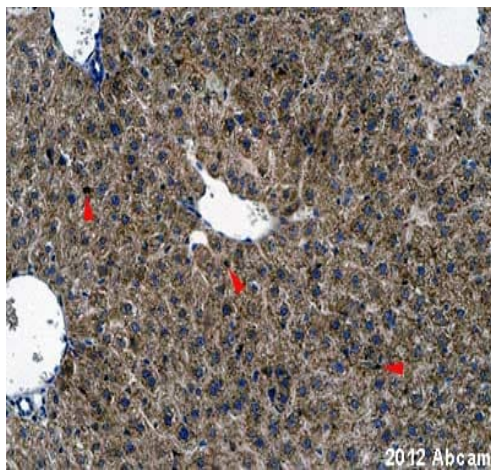
Western blot - Anti-RBP1 antibody (ab104452)

Anti-RBP1 antibody (ab104452) at 0.1 µg/ml + NIH 3T3 lysate (in RIPA buffer) at 35 µg

Developed using the ECL technique.

Predicted band size: 16 kDa

Primary incubation was 1 hour.



Immunohistochemistry (Formalin/PFA-fixed paraffin-embedded sections) - Anti-RBP1 antibody (ab104452)

This image is courtesy of an Abreview submitted by Carl Hobbs

ab104452 staining mouse liver sections by IHC-P. The tissue was fixed with formaldehyde and a heat mediated antigen retrieval step was performed with citric acid pH 6. Blocking of the sample was done with 1% BSA for 10 minutes at 21°C, followed by staining with ab104452 at 1/100 in TBS/BSA/azide for 2h at 21°C. A biotinylated rabbit anti-goat polyclonal antibody at 1/250 was used as the secondary antibody. Red arrowheads indicate strongly stained Kupffer cells.

Please note: All products are "FOR RESEARCH USE ONLY. NOT FOR USE IN DIAGNOSTIC PROCEDURES"

Our Abpromise to you: Quality guaranteed and expert technical support

- Replacement or refund for products not performing as stated on the datasheet
- Valid for 12 months from date of delivery
- Response to your inquiry within 24 hours
- We provide support in Chinese, English, French, German, Japanese and Spanish
- Extensive multi-media technical resources to help you
- We investigate all quality concerns to ensure our products perform to the highest standards

If the product does not perform as described on this datasheet, we will offer a refund or replacement. For full details of the Abpromise, please visit <https://www.abcam.com/abpromise> or contact our technical team.

Terms and conditions

- Guarantee only valid for products bought direct from Abcam or one of our authorized distributors