


Product datasheet

Anti-RC3H1 antibody ab70195

3 Images

Overview

Product name	Anti-RC3H1 antibody
Description	Rabbit polyclonal to RC3H1
Host species	Rabbit
Tested applications	Suitable for: WB, IP
Species reactivity	Reacts with: Mouse, Human Predicted to work with: Horse, Pig, Chimpanzee, Rhesus monkey, Gorilla, Chinese hamster, Orangutan, Elephant 
Immunogen	Synthetic peptide corresponding to a region between residues 500 and 550 of human RC3H1
Positive control	WB: HeLa and 293T whole cell lysates; TCMK-1, 4T1, CT25.WT IP: HeLa whole cell lysate.
General notes	<p>The Life Science industry has been in the grips of a reproducibility crisis for a number of years. Abcam is leading the way in addressing this with our range of recombinant monoclonal antibodies and knockout edited cell lines for gold-standard validation. Please check that this product meets your needs before purchasing.</p> <p>If you have any questions, special requirements or concerns, please send us an inquiry and/or contact our Support team ahead of purchase. Recommended alternatives for this product can be found below, along with publications, customer reviews and Q&As</p>

Properties

Form	Liquid
Storage instructions	Shipped at 4°C. Upon delivery aliquot and store at -20°C. Avoid freeze / thaw cycles.
Storage buffer	pH: 7 Preservative: 0.09% Sodium azide Constituents: 1.815% Tris, 1.764% Sodium citrate, 0.021% PBS
Purity	Immunogen affinity purified
Purification notes	ab70195 was affinity purified using an epitope specific to RC3H1 immobilized on solid support.
Clonality	Polyclonal
Isotype	IgG

Applications

Applications

The Abpromise guarantee

Our **Abpromise guarantee** covers the use of ab70195 in the following tested applications.

The application notes include recommended starting dilutions; optimal dilutions/concentrations should be determined by the end user.

Application	Abreviews	Notes
WB		1/500 - 1/5000. Detects a band of approximately 150 kDa (predicted molecular weight: 126 kDa).
IP		Use at 2-5 µg/mg of lysate.

Target

Function

Represses ICOS function, an essential costimulatory receptor for follicular T-cells. May act as an ubiquitin ligase that regulates ubiquitin-dependent control of AU-rich mRNAs by AUF1/HNRPD and HUR/ELAVL1.

Tissue specificity

Widely expressed. Expressed at higher level in cerebellum, spleen, ovary and liver.

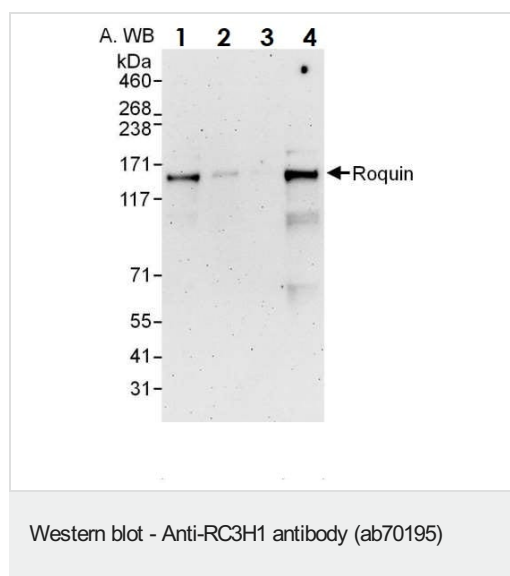
Sequence similarities

Contains 1 C3H1-type zinc finger.
Contains 1 RING-type zinc finger.

Cellular localization

Cytoplasm. Localizes to cytosolic RNA granules, which are sites for regulating mRNA translation and decay, suggesting that it may bind RNA.

Images



All lanes : Anti-RC3H1 antibody (ab70195) at 0.1 µg/ml

Lane 1 : HeLa whole cell lysate at 50 µg

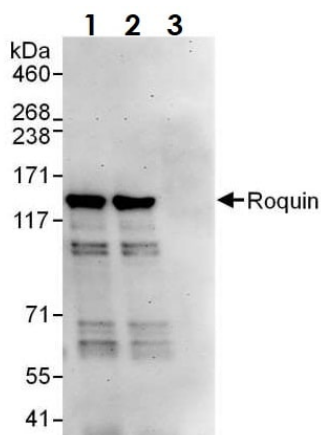
Lane 2 : HeLa whole cell lysate at 15 µg

Lane 3 : HeLa whole cell lysate at 5 µg

Lane 4 : HEK293T whole cell lysate at 50 µg

Predicted band size: 126 kDa

Exposure time: 3 minutes



Immunoprecipitation - Anti-RC3H1 antibody
(ab70195)

RC3H1 was immunoprecipitated from HeLa whole cell lysate (1 mg per IP reaction, 20% loaded) with ab70195 at 6 µg per reaction.

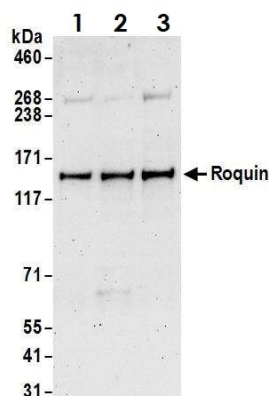
Western blot was performed on the immunoprecipitate using ab70195 at 0.1 µg/mL.

Lane 1: ab70195 IP in HeLa whole cell lysate.

Lane 2: ab70195 IP in HeLa whole cell lysate.

Lane 3: Control IgG in HeLa whole cell lysate.

Detection: Chemiluminescence with an exposure time of 3 minutes



Western blot - Anti-RC3H1 antibody (ab70195)

All lanes : Anti-RC3H1 antibody (ab70195) at 2 µg/ml

Lane 1 : TCMK-1 (mouse kidney epithelial cell line) whole cell lysate

Lane 2 : 4T1 (Mouse mammary gland carcinoma cell line) whole cell lysate

Lane 3 : CT26.WT (Murine Colon Carcinoma) whole cell lysate

Lysates/proteins at 50 µg per lane.

Predicted band size: 126 kDa

Exposure time: 3 minutes

Please note: All products are "FOR RESEARCH USE ONLY. NOT FOR USE IN DIAGNOSTIC PROCEDURES"

Our Abpromise to you: Quality guaranteed and expert technical support

- Replacement or refund for products not performing as stated on the datasheet
- Valid for 12 months from date of delivery
- Response to your inquiry within 24 hours

- We provide support in Chinese, English, French, German, Japanese and Spanish
- Extensive multi-media technical resources to help you
- We investigate all quality concerns to ensure our products perform to the highest standards

If the product does not perform as described on this datasheet, we will offer a refund or replacement. For full details of the Abpromise, please visit <https://www.abcam.com/abpromise> or contact our technical team.

Terms and conditions

- Guarantee only valid for products bought direct from Abcam or one of our authorized distributors