





# Anti-RCCD1 antibody ab122667

6 Images

### Overview

<b>Product name</b>	Anti-RCCD1 antibody
<b>Description</b>	Rabbit polyclonal to RCCD1
<b>Host species</b>	Rabbit
<b>Tested applications</b>	<b>Suitable for:</b> IHC-P, ICC/IF, WB
<b>Species reactivity</b>	<b>Reacts with:</b> Human
<b>Immunogen</b>	antigen sequence: PFIADVQPFPA LLDLPMGSDA VKASCGSRHT AVVTRTGELY TWGWGKYGQL GHEDTTSLDR PRRVEYFVDK QLQVKAVTCG PWNTYVYAVE KG, corresponding to amino acids 283-374 of Human RCCD1 . <a href="#"> Run BLAST with </a> <a href="#"> Run BLAST with </a>
<b>Positive control</b>	IHC-P: Human small intestine, skin, testis and fallopian tube tissues. ICC: A-431 cells. WB: HEK293T cell lysate - overexpressing RCCD1 with a C-terminal myc-DDK tag (~3.1kDa)
<b>General notes</b>	<p>The Life Science industry has been in the grips of a reproducibility crisis for a number of years. Abcam is leading the way in addressing this with our range of recombinant monoclonal antibodies and knockout edited cell lines for gold-standard validation. Please check that this product meets your needs before purchasing.</p> <p>If you have any questions, special requirements or concerns, please send us an inquiry and/or contact our Support team ahead of purchase. Recommended alternatives for this product can be found below, along with publications, customer reviews and Q&amp;As</p>

### Properties

<b>Form</b>	Liquid
<b>Storage instructions</b>	Shipped at 4°C. Upon delivery aliquot and store at -20°C. Avoid freeze / thaw cycles.
<b>Storage buffer</b>	pH: 7.20 Preservative: 0.02% Sodium azide Constituents: 40% Glycerol (glycerin, glycerine), 59% PBS
<b>Purity</b>	Immunogen affinity purified
<b>Clonality</b>	Polyclonal
<b>Isotype</b>	IgG

## Applications

### The Abpromise guarantee

Our **Abpromise guarantee** covers the use of ab122667 in the following tested applications.

The application notes include recommended starting dilutions; optimal dilutions/concentrations should be determined by the end user.

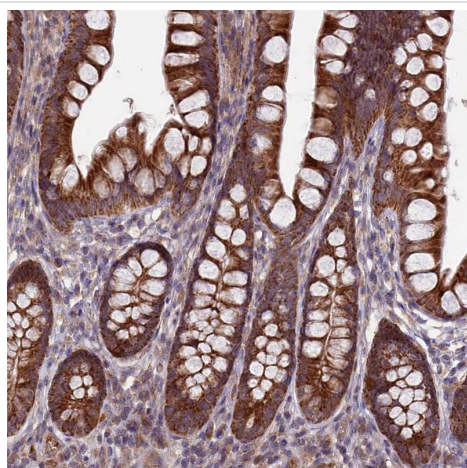
Application	Abreviews	Notes
IHC-P		1/50 - 1/200. Perform heat mediated antigen retrieval with citrate buffer pH 6 before commencing with IHC staining protocol.
ICC/IF		Use a concentration of 0.25 - 2 µg/ml.
WB		Use a concentration of 0.04 - 0.4 µg/ml.

## Target

### Sequence similarities

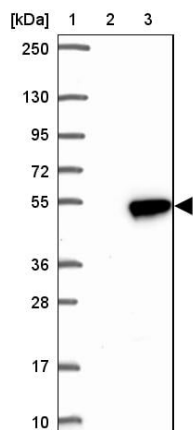
Contains 4 RCC1 repeats.

## Images



Immunohistochemical analysis of formalin-fixed, paraffin-embedded human small intestine tissue labeling RCCD1 with ab122667 at 1/200.

Immunohistochemistry (Formalin/PFA-fixed paraffin-embedded sections) - Anti- RCCD1 antibody (ab122667)



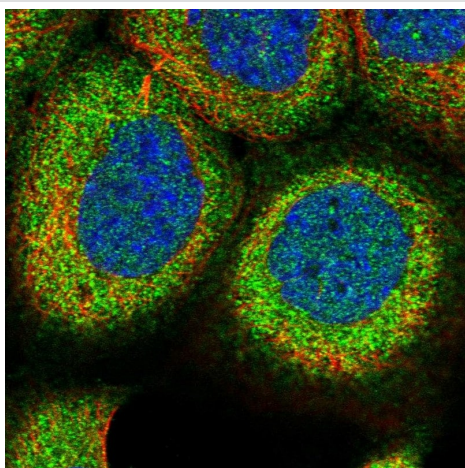
Western blot - Anti- RCCD1 antibody (ab122667)

**Lanes 2-3 :** Anti-RCCD1 antibody (ab122667)

**Lane 1 :** Marker

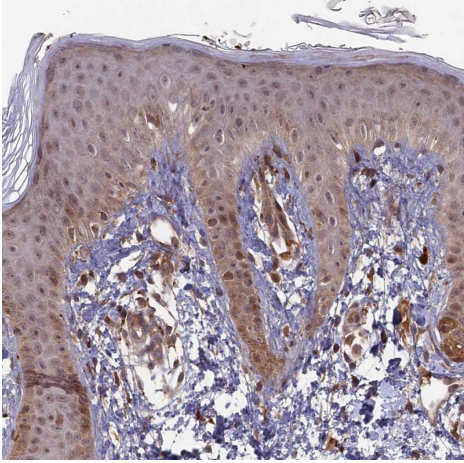
**Lane 2 :** HEK293T cell lysate - vector only transfected

**Lane 3 :** HEK293T cell lysate - overexpressing RCCD1 with a C-terminal myc-DDK tag (~3.1kDa)



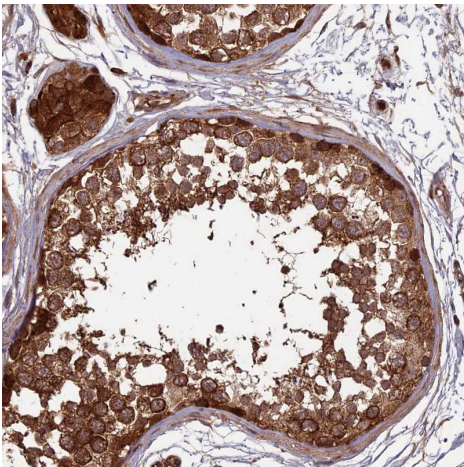
Immunocytochemistry/ Immunofluorescence - Anti-RCCD1 antibody (ab122667)

ab122667, at 4  $\mu$ g/ml staining RCCD1 in PFA/Triton X-100 fixed/permeabilized A431 cells by Immunofluorescence (green).



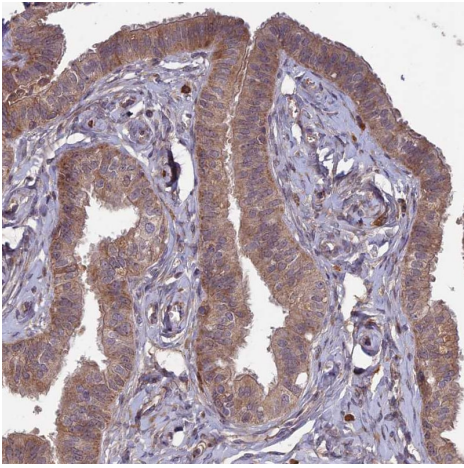
Immunohistochemical analysis of formalin-fixed, paraffin-embedded human skin tissue labeling RCCD1 with ab122667 at 1/200.

Immunohistochemistry (Formalin/PFA-fixed paraffin-embedded sections) - Anti- RCCD1 antibody (ab122667)



Immunohistochemical analysis of formalin-fixed, paraffin-embedded human testis tissue labeling RCCD1 with ab122667 at 1/200.

Immunohistochemistry (Formalin/PFA-fixed paraffin-embedded sections) - Anti- RCCD1 antibody (ab122667)



Immunohistochemistry (Formalin/PFA-fixed paraffin-embedded sections) - Anti- RCCD1 antibody (ab122667)

Immunohistochemical analysis of formalin-fixed, paraffin-embedded human fallopian tube tissue labeling RCCD1 with ab122667 at 1/200.

**Please note:** All products are "FOR RESEARCH USE ONLY. NOT FOR USE IN DIAGNOSTIC PROCEDURES"

#### Our Abpromise to you: Quality guaranteed and expert technical support

---

- Replacement or refund for products not performing as stated on the datasheet
- Valid for 12 months from date of delivery
- Response to your inquiry within 24 hours
- We provide support in Chinese, English, French, German, Japanese and Spanish
- Extensive multi-media technical resources to help you
- We investigate all quality concerns to ensure our products perform to the highest standards

If the product does not perform as described on this datasheet, we will offer a refund or replacement. For full details of the Abpromise, please visit <https://www.abcam.com/abpromise> or contact our technical team.

#### Terms and conditions

---

- Guarantee only valid for products bought direct from Abcam or one of our authorized distributors