

Product datasheet

Anti-RCL antibody [EPR8685] ab150413

Recombinant RabMAb

4 Images

Overview

Product name	Anti-RCL antibody [EPR8685]
Description	Rabbit monoclonal [EPR8685] to RCL
Host species	Rabbit
Tested applications	Suitable for: WB, IHC-P
Species reactivity	Reacts with: Human
Immunogen	Synthetic peptide within Human RCL. The exact sequence is proprietary.
Positive control	K562, Jurkat, HepG2 and 293T cell lysates, Human breast carcinoma and Human kidney tissues
General notes	<p>This product is a recombinant monoclonal antibody, which offers several advantages including:</p> <ul style="list-style-type: none"> - High batch-to-batch consistency and reproducibility - Improved sensitivity and specificity - Long-term security of supply - Animal-free production <p>For more information see here.</p> <p>Our RabMAb® technology is a patented hybridoma-based technology for making rabbit monoclonal antibodies. For details on our patents, please refer to RabMAb® patents.</p> <p>Mouse, Rat: We have preliminary internal testing data to indicate this antibody may not react with these species. Please contact us for more information.</p>

Properties

Form	Liquid
Storage instructions	Shipped at 4°C. Upon delivery aliquot and store at -20°C. Avoid freeze / thaw cycles.
Storage buffer	<p>pH: 7.2</p> <p>Preservative: 0.01% Sodium azide</p> <p>Constituents: 9% PBS, 40% Glycerol (glycerin, glycerine), 0.05% BSA, 50% Tissue culture supernatant</p>
Purity	Protein A purified
Clonality	Monoclonal
Clone number	EPR8685

Isotype

IgG

Applications

The Abpromise guarantee

Our **Abpromise guarantee** covers the use of ab150413 in the following tested applications.

The application notes include recommended starting dilutions; optimal dilutions/concentrations should be determined by the end user.

Application	Abreviews	Notes
WB		1/1000 - 1/10000. Detects a band of approximately 23 kDa (predicted molecular weight: 19 kDa).
IHC-P		1/100 - 1/250. Perform heat mediated antigen retrieval before commencing with IHC staining protocol.

Target

Function

Catalyzes the cleavage of the N-glycosidic bond of deoxyribonucleoside 5'-monophosphates to yield deoxyribose 5-phosphate and a purine or pyrimidine base. Deoxyribonucleoside 5'-monophosphates containing purine bases are preferred to those containing pyrimidine bases.

Tissue specificity

Expressed at low levels in brain, colon, lung, peripheral blood leukocytes, placenta, small intestine, and thymus. Expressed at high levels in heart, kidney, liver, skeletal muscle and spleen. Overexpressed in a significant proportion of breast cancers.

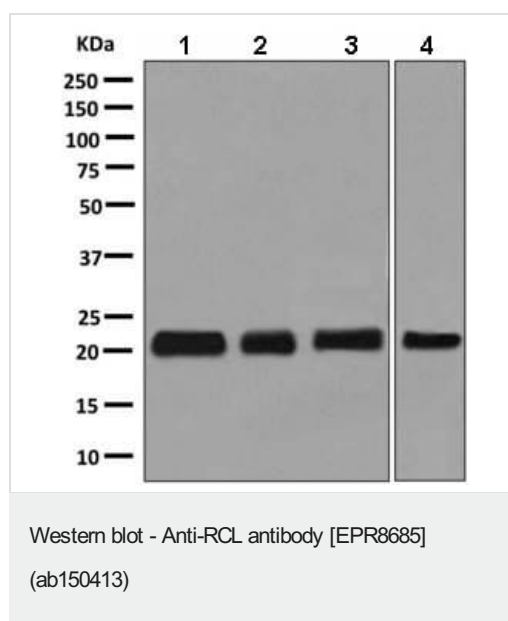
Sequence similarities

Belongs to the deoxyribonucleoside 5'-monophosphate N-glycosidase family.

Cellular localization

Nucleus. Cytoplasm.

Images



All lanes : Anti-RCL antibody [EPR8685] (ab150413) at 1/1000 dilution

Lane 1 : K562 cell lysate

Lane 2 : Jurkat cell lysate

Lane 3 : HepG2 cell lysate

Lane 4 : 293T cell lysate

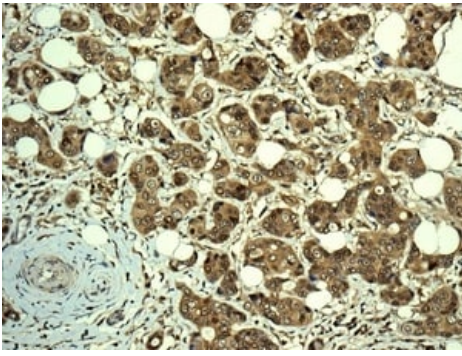
Lysates/proteins at 10 µg per lane.

Secondary

All lanes : HRP labelled goat anti-rabbit at 1/2000 dilution

Predicted band size: 19 kDa

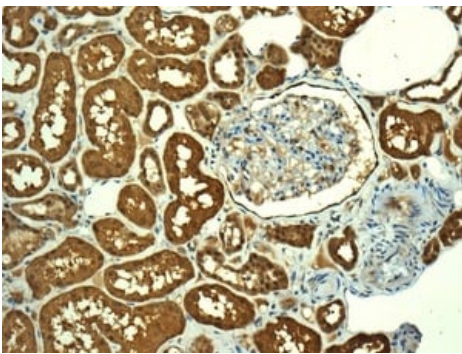
Observed band size: 23 kDa



Immunohistochemistry (Formalin/PFA-fixed paraffin-embedded sections) - Anti-RCL antibody [EPR8685] (ab150413)

Immunohistochemical analysis of paraffin embedded Human breast carcinoma tissue labelling RCL with ab150413 antibody at a dilution of 1/100.

Perform heat mediated antigen retrieval before commencing with IHC staining protocol.



Immunohistochemistry (Formalin/PFA-fixed paraffin-embedded sections) - Anti-RCL antibody [EPR8685] (ab150413)

Immunohistochemical analysis of paraffin embedded Human kidney tissue labelling RCL with ab150413 antibody at a dilution of 1/100.

Perform heat mediated antigen retrieval before commencing with IHC staining protocol.

Why choose a recombinant antibody?



Research with confidence
Consistent and reproducible results



Long-term and scalable supply
Recombinant technology



Success from the first experiment
Confirmed specificity



Ethical standards compliant
Animal-free production

Anti-RCL antibody [EPR8685] (ab150413)

Please note: All products are "FOR RESEARCH USE ONLY. NOT FOR USE IN DIAGNOSTIC PROCEDURES"

Our Abpromise to you: Quality guaranteed and expert technical support

- Replacement or refund for products not performing as stated on the datasheet
- Valid for 12 months from date of delivery
- Response to your inquiry within 24 hours

- We provide support in Chinese, English, French, German, Japanese and Spanish
- Extensive multi-media technical resources to help you
- We investigate all quality concerns to ensure our products perform to the highest standards

If the product does not perform as described on this datasheet, we will offer a refund or replacement. For full details of the Abpromise, please visit <https://www.abcam.com/abpromise> or contact our technical team.

Terms and conditions

- Guarantee only valid for products bought direct from Abcam or one of our authorized distributors