

### Anti-RecA antibody ab63797

★★★★★ [4 Abreviews](#) [36 References](#) [2 Images](#)

#### Overview

<b>Product name</b>	Anti-RecA antibody
<b>Description</b>	Rabbit polyclonal to RecA
<b>Host species</b>	Rabbit
<b>Tested applications</b>	<b>Suitable for:</b> WB, IP
<b>Species reactivity</b>	<b>Reacts with:</b> Escherichia coli
<b>Immunogen</b>	Recombinant full length RecA (Escherichia coli) highly purified by chromatography.
<b>Positive control</b>	Extract of E.coli AB1157.
<b>General notes</b>	<p>The Life Science industry has been in the grips of a reproducibility crisis for a number of years. Abcam is leading the way in addressing this with our range of recombinant monoclonal antibodies and knockout edited cell lines for gold-standard validation. Please check that this product meets your needs before purchasing.</p> <p>If you have any questions, special requirements or concerns, please send us an inquiry and/or contact our Support team ahead of purchase. Recommended alternatives for this product can be found below, along with publications, customer reviews and Q&amp;As</p>

#### Properties

<b>Form</b>	Liquid
<b>Storage instructions</b>	Shipped at 4°C. Store at +4°C short term (1-2 weeks). Upon delivery aliquot. Store at -20°C or -80°C. Avoid freeze / thaw cycle.
<b>Storage buffer</b>	pH: 6 Constituents: PBS, 50% Glycerol (glycerin, glycerine)
<b>Purity</b>	Immunogen affinity purified
<b>Clonality</b>	Polyclonal
<b>Isotype</b>	IgG

#### Applications

**The Abpromise guarantee** Our **Abpromise guarantee** covers the use of ab63797 in the following tested applications. The application notes include recommended starting dilutions; optimal dilutions/concentrations should be determined by the end user.

Application	Abreviews	Notes
WB	★★★★★ (4)	1/3000. Detects a band of approximately 42 kDa (predicted molecular weight: 38 kDa).
IP		1/600.

## Target

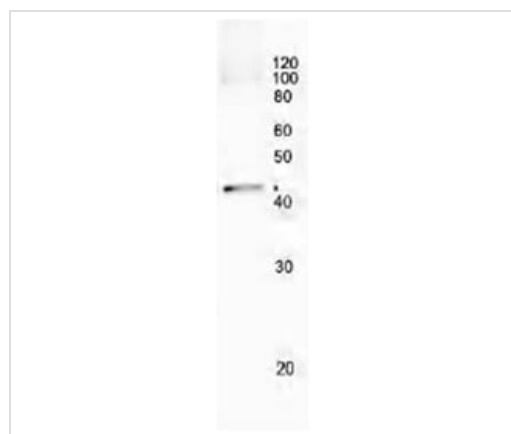
### Relevance

RecA in E.coli can catalyze the hydrolysis of ATP in the presence of single-stranded DNA, the ATP-dependent uptake of single-stranded DNA by duplex DNA, and the ATP-dependent hybridization of homologous single-stranded DNAs. It interacts with lexA causing its activation and leading to its autocatalytic cleavage.

### Cellular localization

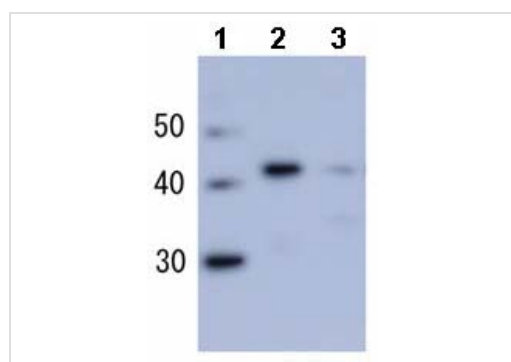
Cytoplasmic

## Images



Immunoprecipitation - Anti-RecA antibody (ab63797)

Immunoprecipitation of RecA protein from crude extract of E. coli cells. 2 µg of ab63797 was adsorbed to proteinA magnetic beads to precipitate RecA protein from supernatant of sonic disrupted E. coli cells. The precipitate was analyzed by western blot.



Western blot - Anti-RecA antibody (ab63797)

**All lanes :** Anti-RecA antibody (ab63797) at 1/3000 dilution

**Lane 1 :** Molecular weight markers

**Lane 2 :** Purified RecA

**Lane 3 :** Extract of E.coli AB1157

**Predicted band size:** 38 kDa

**Observed band size:** 42 kDa

**Please note:** All products are "FOR RESEARCH USE ONLY. NOT FOR USE IN DIAGNOSTIC PROCEDURES"

### **Our Abpromise to you: Quality guaranteed and expert technical support**

---

- Replacement or refund for products not performing as stated on the datasheet
- Valid for 12 months from date of delivery
- Response to your inquiry within 24 hours
  
- We provide support in Chinese, English, French, German, Japanese and Spanish
- Extensive multi-media technical resources to help you
- We investigate all quality concerns to ensure our products perform to the highest standards

If the product does not perform as described on this datasheet, we will offer a refund or replacement. For full details of the Abpromise, please visit <https://www.abcam.com/abpromise> or contact our technical team.

### **Terms and conditions**

---

- Guarantee only valid for products bought direct from Abcam or one of our authorized distributors