


Anti-Recoverin antibody [6A55CD6] ab31928

★★★★★ [2 Abreviews](#) [4 References](#) [2 Images](#)

Overview

Product name	Anti-Recoverin antibody [6A55CD6]
Description	Mouse monoclonal [6A55CD6] to Recoverin
Host species	Mouse
Tested applications	Suitable for: WB, IHC-FoFr
Species reactivity	Reacts with: Mouse, Rat Predicted to work with: Sheep, Cow, Human 
Immunogen	Recombinant full length protein corresponding to Human Recoverin.
Positive control	ab31928 gave a positive result in Mouse Retina Whole Cell Lysate.
General notes	<p>This antibody clone is manufactured by Abcam. If you require a custom buffer formulation or conjugation for your experiments, please contact orders@abcam.com.</p> <p>The Life Science industry has been in the grips of a reproducibility crisis for a number of years. Abcam is leading the way in addressing this with our range of recombinant monoclonal antibodies and knockout edited cell lines for gold-standard validation. Please check that this product meets your needs before purchasing.</p> <p>If you have any questions, special requirements or concerns, please send us an inquiry and/or contact our Support team ahead of purchase. Recommended alternatives for this product can be found below, along with publications, customer reviews and Q&As</p>

Properties

Form	Liquid
Storage instructions	Shipped at 4°C. Store at +4°C short term (1-2 weeks). Upon delivery aliquot. Store at -20°C or -80°C. Avoid freeze / thaw cycle.
Storage buffer	pH: 7.40 Preservative: 0.02% Sodium azide Constituents: PBS, 6.97% L-Arginine
Purity	Protein G purified
Clonality	Monoclonal
Clone number	6A55CD6
Isotype	IgG2a

Applications

The Abpromise guarantee

Our **Abpromise guarantee** covers the use of ab31928 in the following tested applications.

The application notes include recommended starting dilutions; optimal dilutions/concentrations should be determined by the end user.

Application	Abreviews	Notes
WB		Use a concentration of 2 µg/ml. Detects a band of approximately 26 kDa (predicted molecular weight: 23 kDa).
IHC-FoFr	★★★★★ (1)	Use at an assay dependent concentration.

Target

Function

Seems to be implicated in the pathway from retinal rod guanylate cyclase to rhodopsin. May be involved in the inhibition of the phosphorylation of rhodopsin in a calcium-dependent manner. The calcium-bound recoverin prolongs the photoresponse.

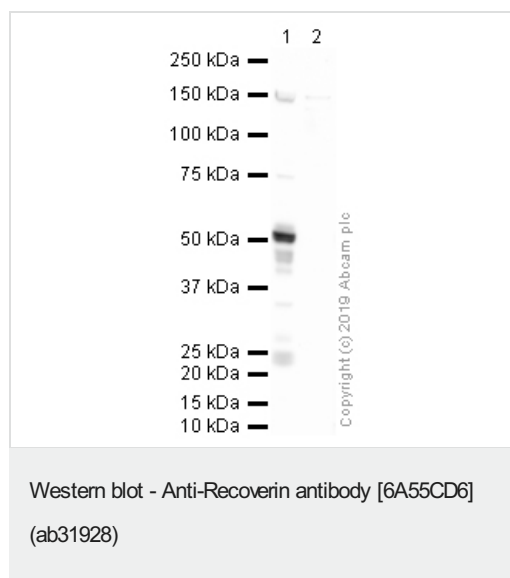
Tissue specificity

Retina and pineal gland.

Sequence similarities

Belongs to the recoverin family.
Contains 4 EF-hand domains.

Images



All lanes : Anti-Recoverin antibody [6A55CD6] (ab31928) at 5 µg/ml

Lane 1 : Mouse Retina Whole Cell Lysate

Lane 2 : Human Retina Normal Tissue Lysate

Lysates/proteins at 10 µg per lane.

Secondary

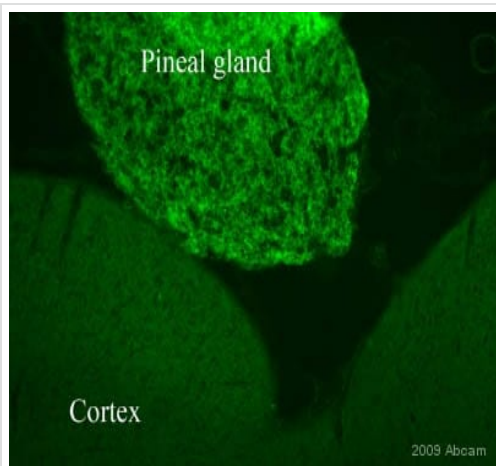
All lanes : Goat polyclonal to Mouse IgG H&L Pre-Adsorbed (HRP) at 1/5000 dilution

Developed using the ECL technique.

Performed under reducing conditions.

Predicted band size: 23 kDa

Exposure time: 8 minutes



Immunohistochemistry (PFA perfusion fixed frozen sections) - Anti-Recoverin antibody [6A55CD6] (ab31928)

This image is courtesy of an Abreview submitted by Dr Sophie Pezet

ab31928 staining Recoverin in rat brain tissue section by Immunohistochemistry (PFA perfusion fixed frozen sections). Tissue underwent fixation in paraformaldehyde without permeation and blocking steps. The primary antibody was diluted, 1/300 (PBS + 0.3% Triton X100) and incubated with sample for 18 hours at 20°C. An Alexa Fluor® 488 conjugated goat polyclonal to mouse IgG, diluted 1/1000 was used as secondary.

Please note: All products are "FOR RESEARCH USE ONLY. NOT FOR USE IN DIAGNOSTIC PROCEDURES"

Our Abpromise to you: Quality guaranteed and expert technical support

- Replacement or refund for products not performing as stated on the datasheet
- Valid for 12 months from date of delivery
- Response to your inquiry within 24 hours
- We provide support in Chinese, English, French, German, Japanese and Spanish
- Extensive multi-media technical resources to help you
- We investigate all quality concerns to ensure our products perform to the highest standards

If the product does not perform as described on this datasheet, we will offer a refund or replacement. For full details of the Abpromise, please visit <https://www.abcam.com/abpromise> or contact our technical team.

Terms and conditions

- Guarantee only valid for products bought direct from Abcam or one of our authorized distributors