


Anti-Reelin antibody ab138370

★★★★★ [1 Abreviews](#) [1 References](#) [1 Image](#)

Overview

Product name	Anti-Reelin antibody
Description	Rabbit polyclonal to Reelin
Host species	Rabbit
Tested applications	Suitable for: IHC-P
Species reactivity	Reacts with: Mouse Predicted to work with: Rat, Rabbit, Horse, Chicken, Cow, Dog, Human, Pig, Macaque monkey, Gorilla 
Immunogen	Synthetic peptide corresponding to Mouse Reelin aa 3400 to the C-terminus conjugated to keyhole limpet haemocyanin. Database link: Q60841
Positive control	This antibody gave a positive result in IHC in the following FFPE tissue: Mouse normal brain.
General notes	<p>The Life Science industry has been in the grips of a reproducibility crisis for a number of years. Abcam is leading the way in addressing this with our range of recombinant monoclonal antibodies and knockout edited cell lines for gold-standard validation. Please check that this product meets your needs before purchasing.</p> <p>If you have any questions, special requirements or concerns, please send us an inquiry and/or contact our Support team ahead of purchase. Recommended alternatives for this product can be found below, along with publications, customer reviews and Q&As</p>

Properties

Form	Liquid
Storage instructions	Shipped at 4°C. Store at +4°C short term (1-2 weeks). Upon delivery aliquot. Store at -20°C or -80°C. Avoid freeze / thaw cycle.
Storage buffer	pH: 7.40 Preservative: 0.02% Sodium azide Constituent: PBS
	Batches of this product that have a concentration < 1mg/ml may have BSA added as a stabilising agent. If you would like information about the formulation of a specific lot, please contact our scientific support team who will be happy to help.

Purity	Immunogen affinity purified
Clonality	Polyclonal
Isotype	IgG

Applications

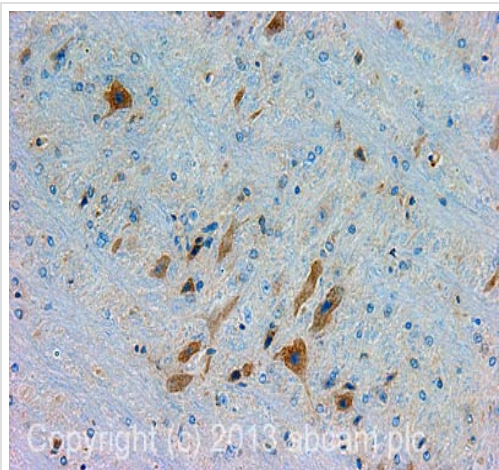
The Abpromise guarantee Our **Abpromise guarantee** covers the use of ab138370 in the following tested applications. The application notes include recommended starting dilutions; optimal dilutions/concentrations should be determined by the end user.

Application	Abreviews	Notes
IHC-P	★★★★★ (1)	Use a concentration of 1 µg/ml. Perform heat mediated antigen retrieval with citrate buffer pH 6 before commencing with IHC staining protocol.

Target

Function	Extracellular matrix serine protease that plays a role in layering of neurons in the cerebral cortex and cerebellum. Regulates microtubule function in neurons and neuronal migration. Affects migration of sympathetic preganglionic neurons in the spinal cord, where it seems to act as a barrier to neuronal migration. Enzymatic activity is important for the modulation of cell adhesion. Binding to the extracellular domains of lipoprotein receptors VLDLR and LRP8/APOER2 induces tyrosine phosphorylation of DAB1 and modulation of TAU phosphorylation.
Tissue specificity	Abundantly produced during brain ontogenesis by the Cajal-Retzius cells and other pioneer neurons located in the telencephalic marginal zone and by granule cells of the external granular layer of the cerebellum. In adult brain, preferentially expressed in GABAergic interneurons of prefrontal cortices, temporal cortex, hippocampus and glutamatergic granule cells of cerebellum. Expression is reduced to about 50% in patients with schizophrenia. Also expressed in fetal and adult liver.
Involvement in disease	Lissencephaly 2
Sequence similarities	Belongs to the reelin family. Contains 16 BNR repeats. Contains 8 EGF-like domains. Contains 1 reelin domain.
Developmental stage	Expressed in fetal and postnatal brain and liver. Expression in postnatal human brain is high in the cerebellum.
Domain	The basic C-terminal region is essential for secretion.
Cellular localization	Secreted > extracellular space > extracellular matrix.

Images



Immunohistochemistry (Formalin/PFA-fixed paraffin-embedded sections) - Anti-Reelin antibody (ab138370)

IHC image of Reelin staining in Mouse normal brain formalin fixed paraffin embedded tissue section, performed on a Leica Bond™ system using the standard protocol B. The section was pre-treated using heat mediated antigen retrieval with sodium citrate buffer (pH6, epitope retrieval solution 1) for 20 mins. The section was then incubated with ab138370, 1µg/ml, for 15 mins at room temperature. A Goat anti-Rabbit biotinylated secondary antibody was used to detect the primary, and visualized using an HRP conjugated ABC system. DAB was used as the chromogen. The section was then counterstained with haematoxylin and mounted with DPX.

For other IHC staining systems (automated and non-automated) customers should optimize variable parameters such as antigen retrieval conditions, primary antibody concentration and antibody incubation times.

Please note: All products are "FOR RESEARCH USE ONLY. NOT FOR USE IN DIAGNOSTIC PROCEDURES"

Our Abpromise to you: Quality guaranteed and expert technical support

- Replacement or refund for products not performing as stated on the datasheet
- Valid for 12 months from date of delivery
- Response to your inquiry within 24 hours
- We provide support in Chinese, English, French, German, Japanese and Spanish
- Extensive multi-media technical resources to help you
- We investigate all quality concerns to ensure our products perform to the highest standards

If the product does not perform as described on this datasheet, we will offer a refund or replacement. For full details of the Abpromise, please visit <https://www.abcam.com/abpromise> or contact our technical team.

Terms and conditions

- Guarantee only valid for products bought direct from Abcam or one of our authorized distributors