

## Product datasheet

### Anti-Reelin antibody [EPR3330(2)] ab139691

Recombinant RabMAb

★★★★★ 1 Abreviews 3 References 2 Images

#### Overview

Product name	Anti-Reelin antibody [EPR3330(2)]
Description	Rabbit monoclonal [EPR3330(2)] to Reelin
Host species	Rabbit
Tested applications	<b>Suitable for:</b> WB <b>Unsuitable for:</b> Flow Cyt, ICC/IF, IHC-P or IP
Species reactivity	<b>Reacts with:</b> Rat, Human
Immunogen	Synthetic peptide within Human Reelin aa 3250-3350. The exact sequence is proprietary.
Positive control	HepG2, C6, and Human fetal brain lysates.
General notes	This product is a recombinant monoclonal antibody, which offers several advantages including: <ul style="list-style-type: none"> <li>- High batch-to-batch consistency and reproducibility</li> <li>- Improved sensitivity and specificity</li> <li>- Long-term security of supply</li> <li>- Animal-free production</li> </ul> For more information <a href="#">see here</a> . Our RabMAb <sup>®</sup> technology is a patented hybridoma-based technology for making rabbit monoclonal antibodies. For details on our patents, please refer to <a href="#">RabMAb<sup>®</sup> patents</a> .  Mouse: We have preliminary internal testing data to indicate this antibody may not react with this species. Please contact us for more information.

#### Properties

Form	Liquid
Storage instructions	Shipped at 4°C. Store at -20°C.
Storage buffer	pH: 7.2 Preservative: 0.01% Sodium azide Constituents: 9% PBS, 40% Glycerol (glycerin, glycerine), 0.05% BSA, 50% Tissue culture supernatant
Purity	Tissue culture supernatant
Clonality	Monoclonal

Clone number	EPR3330(2)
Isotype	IgG

## Applications

**The Abpromise guarantee** Our **Abpromise guarantee** covers the use of ab139691 in the following tested applications. The application notes include recommended starting dilutions; optimal dilutions/concentrations should be determined by the end user.

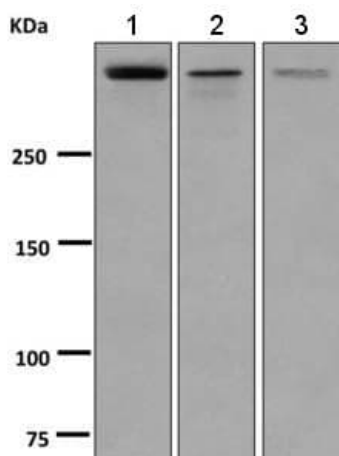
Application	Abreviews	Notes
WB	★★★★★ (1)	1/1000 - 1/10000. Predicted molecular weight: 388 kDa.

**Application notes** Is unsuitable for Flow Cyt, ICC/IF, IHC-P or IP.

## Target

<b>Function</b>	Extracellular matrix serine protease that plays a role in layering of neurons in the cerebral cortex and cerebellum. Regulates microtubule function in neurons and neuronal migration. Affects migration of sympathetic preganglionic neurons in the spinal cord, where it seems to act as a barrier to neuronal migration. Enzymatic activity is important for the modulation of cell adhesion. Binding to the extracellular domains of lipoprotein receptors VLDLR and LRP8/APOER2 induces tyrosine phosphorylation of DAB1 and modulation of TAU phosphorylation.
<b>Tissue specificity</b>	Abundantly produced during brain ontogenesis by the Cajal-Retzius cells and other pioneer neurons located in the telencephalic marginal zone and by granule cells of the external granular layer of the cerebellum. In adult brain, preferentially expressed in GABAergic interneurons of prefrontal cortices, temporal cortex, hippocampus and glutamatergic granule cells of cerebellum. Expression is reduced to about 50% in patients with schizophrenia. Also expressed in fetal and adult liver.
<b>Involvement in disease</b>	Lissencephaly 2
<b>Sequence similarities</b>	Belongs to the reelin family. Contains 16 BNR repeats. Contains 8 EGF-like domains. Contains 1 reelin domain.
<b>Developmental stage</b>	Expressed in fetal and postnatal brain and liver. Expression in postnatal human brain is high in the cerebellum.
<b>Domain</b>	The basic C-terminal region is essential for secretion.
<b>Cellular localization</b>	Secreted > extracellular space > extracellular matrix.

## Images



Western blot - Anti-Reelin antibody [EPR3330(2)]  
(ab139691)

**All lanes** : Anti-Reelin antibody [EPR3330(2)] (ab139691) at 1/1000 dilution

**Lane 1** : HepG2 cell lysate

**Lane 2** : C6 cell lysate

**Lane 3** : Human fetal brain lysate

Lysates/proteins at 10 µg per lane.

### Secondary

**All lanes** : Standard HRP labelled goat anti-rabbit at 1/2000 dilution

Developed using the ECL technique.

**Predicted band size:** 388 kDa

### Why choose a recombinant antibody?



**Research with confidence**  
Consistent and reproducible results



**Long-term and scalable supply**  
Recombinant technology



**Success from the first experiment**  
Confirmed specificity



**Ethical standards compliant**  
Animal-free production

Anti-Reelin antibody [EPR3330(2)] (ab139691)

**Please note:** All products are "FOR RESEARCH USE ONLY. NOT FOR USE IN DIAGNOSTIC PROCEDURES"

### Our Abpromise to you: Quality guaranteed and expert technical support

- Replacement or refund for products not performing as stated on the datasheet
- Valid for 12 months from date of delivery
- Response to your inquiry within 24 hours

- We provide support in Chinese, English, French, German, Japanese and Spanish
- Extensive multi-media technical resources to help you
- We investigate all quality concerns to ensure our products perform to the highest standards

If the product does not perform as described on this datasheet, we will offer a refund or replacement. For full details of the Abpromise, please visit <https://www.abcam.com/abpromise> or contact our technical team.

#### **Terms and conditions**

---

- Guarantee only valid for products bought direct from Abcam or one of our authorized distributors