



## Product datasheet

### Anti-Reg3 $\alpha$ antibody ab220884

1 Image

#### Overview

<b>Product name</b>	Anti-Reg3a antibody
<b>Description</b>	Rabbit polyclonal to Reg3a
<b>Host species</b>	Rabbit
<b>Tested applications</b>	<b>Suitable for:</b> ICC/IF
<b>Species reactivity</b>	<b>Reacts with:</b> Human
<b>Immunogen</b>	Recombinant fragment corresponding to Human Reg3a aa 100 to the C-terminus. Database link: <a href="#">Q06141</a>
	 <a href="#">Run BLAST with</a>  <a href="#">Run BLAST with</a>
<b>Positive control</b>	SH-SY5Y cells.
<b>General notes</b>	<p>The Life Science industry has been in the grips of a reproducibility crisis for a number of years. Abcam is leading the way in addressing this with our range of recombinant monoclonal antibodies and knockout edited cell lines for gold-standard validation. Please check that this product meets your needs before purchasing.</p> <p>If you have any questions, special requirements or concerns, please send us an inquiry and/or contact our Support team ahead of purchase. Recommended alternatives for this product can be found below, along with publications, customer reviews and Q&amp;As</p>

#### Properties

<b>Form</b>	Liquid
<b>Storage instructions</b>	Shipped at 4°C. Store at +4°C short term (1-2 weeks). Upon delivery aliquot. Store at -20°C long term. Avoid freeze / thaw cycle.
<b>Storage buffer</b>	pH: 7.20 Preservative: 0.02% Sodium azide Constituents: 40% Glycerol (glycerin, glycerine), 59% PBS
<b>Purity</b>	Immunogen affinity purified
<b>Clonality</b>	Polyclonal
<b>Isotype</b>	IgG

#### Applications

## The Abpromise guarantee

Our **Abpromise guarantee** covers the use of ab220884 in the following tested applications.

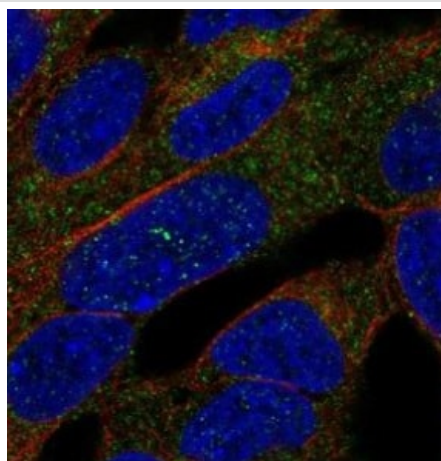
The application notes include recommended starting dilutions; optimal dilutions/concentrations should be determined by the end user.

Application	Abreviews	Notes
ICC/IF		Use a concentration of 0.25 - 2 µg/ml. Fixation/Permeabilization: PFA/Triton X-100.

## Target

<b>Function</b>	Bactericidal C-type lectin which acts exclusively against Gram-positive bacteria and mediates bacterial killing by binding to surface-exposed carbohydrate moieties of peptidoglycan. Regulates keratinocyte proliferation and differentiation after skin injury via activation of EXTL3-PI3K-AKT signaling pathway.
<b>Tissue specificity</b>	Highly expressed in epidermal keratinocytes of psoriasis patients (at protein level). Constitutively expressed in intestine. Low expression is found in healthy pancreas. Overexpressed during the acute phase of pancreatitis and in some patients with chronic pancreatitis.
<b>Sequence similarities</b>	Contains 1 C-type lectin domain.
<b>Domain</b>	The EPN motif is essential for recognition of the peptidoglycan carbohydrate backbone and for efficient bacterial killing with Glu-114 playing a key role in peptidoglycan binding and bactericidal activity.
<b>Post-translational modifications</b>	Proteolytic processing by trypsin removes an inhibitory N-terminal propeptide and is essential for peptidoglycan binding and antibacterial activity.
<b>Cellular localization</b>	Secreted. Found in the apical region of pancreatic acinar cells.

## Images



Immunofluorescent analysis of PFA-fixed/Triton X-100 permeabilized SH-SY5Y cells labeling Reg3a with ab220884 at 4 µg/mL (green).

Immunocytochemistry/ Immunofluorescence - Anti-Reg3a antibody (ab220884)

**Please note:** All products are "FOR RESEARCH USE ONLY. NOT FOR USE IN DIAGNOSTIC PROCEDURES"

## **Our Abpromise to you: Quality guaranteed and expert technical support**

---

- Replacement or refund for products not performing as stated on the datasheet
- Valid for 12 months from date of delivery
- Response to your inquiry within 24 hours
  
- We provide support in Chinese, English, French, German, Japanese and Spanish
- Extensive multi-media technical resources to help you
- We investigate all quality concerns to ensure our products perform to the highest standards

If the product does not perform as described on this datasheet, we will offer a refund or replacement. For full details of the Abpromise, please visit <https://www.abcam.com/abpromise> or contact our technical team.

## **Terms and conditions**

---

- Guarantee only valid for products bought direct from Abcam or one of our authorized distributors