




## Product datasheet

# Anti-Relaxin 2/RLN2 antibody ab232707

[1 References](#) [5 Images](#)

### Overview

<b>Product name</b>	Anti-Relaxin 2/RLN2 antibody
<b>Description</b>	Rabbit polyclonal to Relaxin 2/RLN2
<b>Host species</b>	Rabbit
<b>Tested applications</b>	<b>Suitable for:</b> IHC-P, WB
<b>Species reactivity</b>	<b>Reacts with:</b> Human <b>Predicted to work with:</b> Chimpanzee 
<b>Immunogen</b>	Recombinant full length protein (His-tag) corresponding to Human Relaxin 2/RLN2 aa 1 to the C-terminus. (Expressed in E.coli). Database link: <a href="#">P04090</a> <div>  <a href="#">Run BLAST with</a>  <a href="#">Run BLAST with</a> </div>
<b>Positive control</b>	WB: Human placenta lysate; Recombinant human Relaxin 2/RLN2 protein. IHC-P: Human cerebrum, liver and liver cancer tissue.
<b>General notes</b>	<p>The Life Science industry has been in the grips of a reproducibility crisis for a number of years. Abcam is leading the way in addressing this with our range of recombinant monoclonal antibodies and knockout edited cell lines for gold-standard validation. Please check that this product meets your needs before purchasing.</p> <p>If you have any questions, special requirements or concerns, please send us an inquiry and/or contact our Support team ahead of purchase. Recommended alternatives for this product can be found below, along with publications, customer reviews and Q&amp;As</p>

### Properties

<b>Form</b>	Liquid
<b>Storage instructions</b>	Shipped at 4°C. Store at +4°C short term (1-2 weeks). Upon delivery aliquot. Store at -20°C long term. Avoid freeze / thaw cycle.
<b>Storage buffer</b>	pH: 7.40 Preservative: 0.02% Sodium azide Constituents: 44.12% PBS, 55.77% Glycerol (glycerin, glycerine)
<b>Purity</b>	Immunogen affinity purified
<b>Purification notes</b>	Antigen-specific affinity chromatography followed by Protein A affinity chromatography.
<b>Clonality</b>	Polyclonal

Isotype

IgG

## Applications

### The Abpromise guarantee

Our **Abpromise guarantee** covers the use of ab232707 in the following tested applications.

The application notes include recommended starting dilutions; optimal dilutions/concentrations should be determined by the end user.

Application	Abreviews	Notes
IHC-P		Use a concentration of 5 - 20 µg/ml.
WB		Use a concentration of 1 - 5 µg/ml.

## Target

### Function

Relaxin is an ovarian hormone that acts with estrogen to produce dilatation of the birth canal in many mammals. May be involved in remodeling of connective tissues during pregnancy, promoting growth of pubic ligaments and ripening of the cervix.

### Tissue specificity

Isoform 1 is expressed in the ovary during pregnancy. Also expressed in placenta, decidua and prostate. Isoform 2 is relatively abundant in placenta. It is in much lower abundance in the prostate gland. Not detected in the ovary.

### Sequence similarities

Belongs to the insulin family.

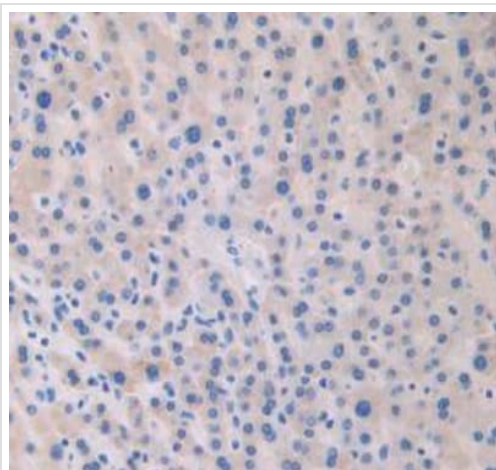
### Cellular localization

Secreted.

### Form

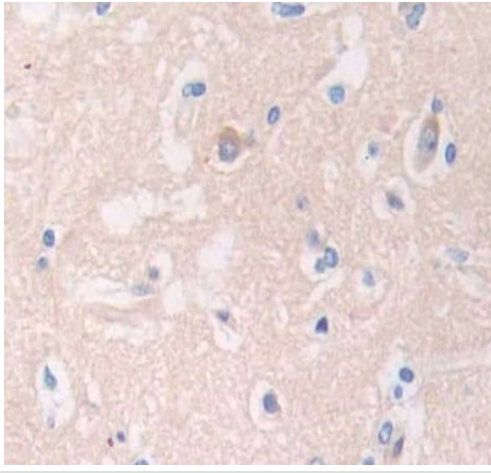
Prorelaxin 2 is Cleaved into the following 2 chains: 1.Relaxin B chain - aa 25-53. 2.Relaxin A chain - aa 162-185. The signal peptide is from aa 1-24.

## Images



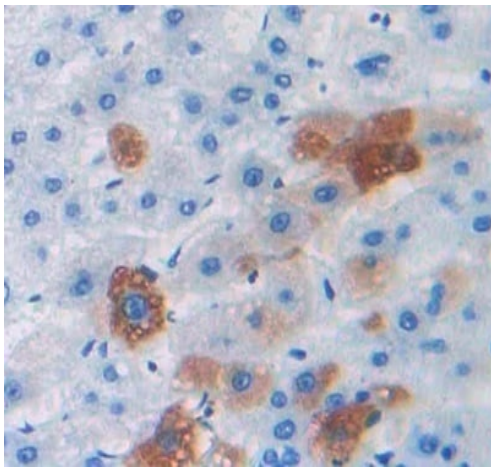
Formalin-fixed, paraffin-embedded human liver tissue stained for Relaxin 2/RLN2 using ab232707 at 30 µg/ml in immunohistochemical analysis. DAB staining.

Immunohistochemistry (Formalin/PFA-fixed paraffin-embedded sections) - Anti-Relaxin 2/RLN2 antibody (ab232707)



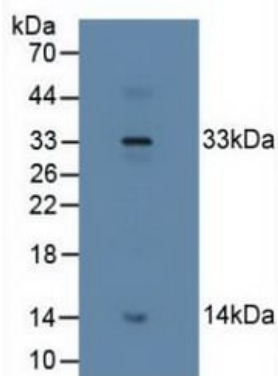
Formalin-fixed, paraffin-embedded human cerebrum tissue stained for Relxin 2/RLN2 using ab232707 at 30 µg/ml in immunohistochemical analysis. DAB staining.

Immunohistochemistry (Formalin/PFA-fixed paraffin-embedded sections) - Anti-Relxin 2/RLN2 antibody (ab232707)



Formalin-fixed, paraffin-embedded human liver cancer tissue stained for Relxin 2/RLN2 using ab232707 at 30 µg/ml in immunohistochemical analysis. DAB staining.

Immunohistochemistry (Formalin/PFA-fixed paraffin-embedded sections) - Anti-Relxin 2/RLN2 antibody (ab232707)

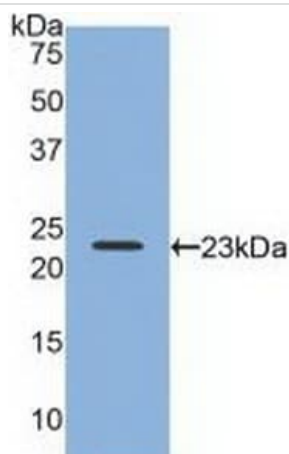


Western blot - Anti-Relaxin 2/RLN2 antibody  
(ab232707)

Anti-Relaxin 2/RLN2 antibody (ab232707) at 2 µg/ml + Human placenta lysate

#### Secondary

HRP-Linked Guinea pig anti-rabbit at 1/2000 dilution



Western blot - Anti-Relaxin 2/RLN2 antibody  
(ab232707)

Anti-Relaxin 2/RLN2 antibody (ab232707) at 2 µg/ml +  
Recombinant human Relaxin 2/RLN2 protein

**Please note:** All products are "FOR RESEARCH USE ONLY. NOT FOR USE IN DIAGNOSTIC PROCEDURES"

#### Our Abpromise to you: Quality guaranteed and expert technical support

- Replacement or refund for products not performing as stated on the datasheet
- Valid for 12 months from date of delivery
- Response to your inquiry within 24 hours
- We provide support in Chinese, English, French, German, Japanese and Spanish
- Extensive multi-media technical resources to help you
- We investigate all quality concerns to ensure our products perform to the highest standards

If the product does not perform as described on this datasheet, we will offer a refund or replacement. For full details of the Abpromise, please visit <https://www.abcam.com/abpromise> or contact our technical team.

## Terms and conditions

---

- Guarantee only valid for products bought direct from Abcam or one of our authorized distributors