

Product datasheet

Anti-Renin antibody [EPR6433] **ab125012**

Recombinant **RabMAb**

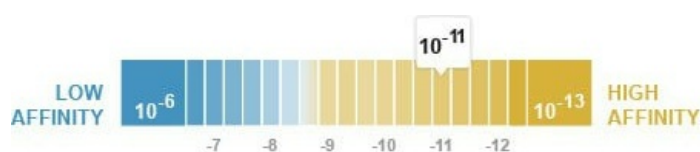
4 Images

Overview

Product name	Anti-Renin antibody [EPR6433]
Description	Rabbit monoclonal [EPR6433] to Renin
Host species	Rabbit
Tested applications	Suitable for: Flow Cyt (Intra), WB Unsuitable for: ICC/IF, IHC-P or IP
Species reactivity	Reacts with: Human Does not react with: Mouse, Rat
Immunogen	Synthetic peptide within Human Renin aa 50-150. The exact sequence is proprietary. Database link: P00797
Positive control	K562, 293T, and HepG2 whole cell lysate (ab7900). K562 cells.
General notes	This product is a recombinant monoclonal antibody, which offers several advantages including: <ul style="list-style-type: none"> - High batch-to-batch consistency and reproducibility - Improved sensitivity and specificity - Long-term security of supply - Animal-free production For more information see here . Our RabMAb [®] technology is a patented hybridoma-based technology for making rabbit monoclonal antibodies. For details on our patents, please refer to RabMAb[®] patents .

Properties

Form	Liquid
Storage instructions	Shipped at 4°C. Upon delivery aliquot and store at -20°C. Avoid freeze / thaw cycles.
Dissociation constant (K _D)	K _D = 1.70 x 10 ⁻¹¹ M



[Learn more about K_D](#)

Storage buffer	pH: 7.20
----------------	----------

	Preservative: 0.01% Sodium azide
	Constituents: 9% PBS, 40% Glycerol (glycerin, glycerine), 0.05% BSA, 50% Tissue culture supernatant
Purity	Protein A purified
Clonality	Monoclonal
Clone number	EPR6433
Isotype	IgG

Applications

The Abpromise guarantee Our **Abpromise guarantee** covers the use of ab125012 in the following tested applications. The application notes include recommended starting dilutions; optimal dilutions/concentrations should be determined by the end user.

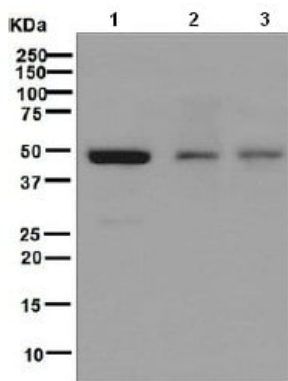
Application	Abreviews	Notes
Flow Cyt (Intra)		1/10 - 1/100. ab172730 - Rabbit monoclonal IgG, is suitable for use as an isotype control with this antibody
WB		1/1000 - 1/10000. Detects a band of approximately 47 kDa (predicted molecular weight: 45 kDa).

Application notes Is unsuitable for ICC/IF, IHC-P or IP.

Target

Function	Renin is a highly specific endopeptidase, whose only known function is to generate angiotensin I from angiotensinogen in the plasma, initiating a cascade of reactions that produce an elevation of blood pressure and increased sodium retention by the kidney.
Involvement in disease	Defects in REN are a cause of renal tubular dysgenesis (RTD) [MIM:267430]. RTD is an autosomal recessive severe disorder of renal tubular development characterized by persistent fetal anuria and perinatal death, probably due to pulmonary hypoplasia from early-onset oligohydramnios (the Potter phenotype). Defects in REN are the cause of familial juvenile hyperuricemic nephropathy type 2 (HNFJ2) [MIM:613092]. It is a renal disease characterized by juvenile onset of hyperuricemia, slowly progressive renal failure and anemia.
Sequence similarities	Belongs to the peptidase A1 family.
Cellular localization	Secreted. Membrane. Associated to membranes via binding to ATP6AP2.

Images



Western blot - Anti-Renin antibody [EPR6433]
(ab125012)

All lanes : Anti-Renin antibody [EPR6433] (ab125012) at 1/1000 dilution

Lane 1 : K562 lysate

Lane 2 : 293T (Human embryonic kidney epithelial cell) cell lysate

Lane 3 : HepG2 cell lysate

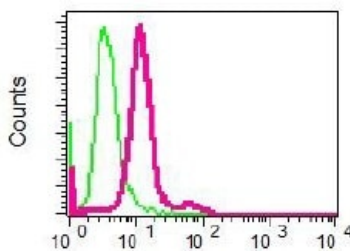
Lysates/proteins at 10 µg per lane.

Secondary

All lanes : HRP labelled goat anti-rabbit at 1/2000 dilution

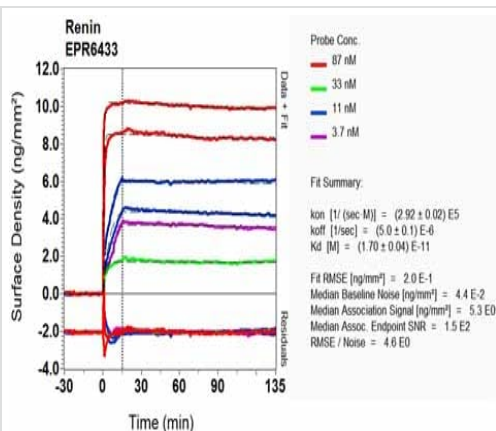
Predicted band size: 45 kDa

Observed band size: 47 kDa



Flow Cytometry (Intracellular) - Anti-Renin antibody
[EPR6433] (ab125012)

Intracellular flow cytometric analysis of permeabilized K562 cells using ab125012 at 1/10 shown in red or a rabbit IgG negative control shown in green.



BIOSOR Scanning - Anti-Renin antibody [EPR6433]
(ab125012)

Equilibrium dissociation constant (K_D)

Learn more about K_D

[Click here to learn more about \$K_D\$](#)

Why choose a recombinant antibody?



Research with confidence
Consistent and reproducible results



Long-term and scalable supply
Recombinant technology



Success from the first experiment
Confirmed specificity



Ethical standards compliant
Animal-free production

Anti-Renin antibody [EPR6433] (ab125012)

Please note: All products are "FOR RESEARCH USE ONLY. NOT FOR USE IN DIAGNOSTIC PROCEDURES"

Our Abpromise to you: Quality guaranteed and expert technical support

- Replacement or refund for products not performing as stated on the datasheet
- Valid for 12 months from date of delivery
- Response to your inquiry within 24 hours
- We provide support in Chinese, English, French, German, Japanese and Spanish
- Extensive multi-media technical resources to help you
- We investigate all quality concerns to ensure our products perform to the highest standards

If the product does not perform as described on this datasheet, we will offer a refund or replacement. For full details of the Abpromise, please visit <https://www.abcam.com/abpromise> or contact our technical team.

Terms and conditions

- Guarantee only valid for products bought direct from Abcam or one of our authorized distributors