


Product datasheet

Anti-Retinal S antigen antibody [S128] ab190315

[2 Images](#)

Overview

Product name	Anti-Retinal S antigen antibody [S128]
Description	Mouse monoclonal [S128] to Retinal S antigen
Host species	Mouse
Tested applications	Suitable for: WB, IHC-Fr
Species reactivity	Reacts with: Cow, Pig Predicted to work with: Mouse, Rat, Human 
Immunogen	Recombinant fragment corresponding to Cow Retinal S antigen. (With the first 20 amino acids of the C-terminus truncated). Database link: P08168
Positive control	WB: Bovine retinal extract. ICC/IF: Pig retina tissue.
General notes	<p>The Life Science industry has been in the grips of a reproducibility crisis for a number of years. Abcam is leading the way in addressing this with our range of recombinant monoclonal antibodies and knockout edited cell lines for gold-standard validation. Please check that this product meets your needs before purchasing.</p> <p>If you have any questions, special requirements or concerns, please send us an inquiry and/or contact our Support team ahead of purchase. Recommended alternatives for this product can be found below, along with publications, customer reviews and Q&As</p>

Properties

Form	Liquid
Storage instructions	Shipped at 4°C. Store at +4°C short term (1-2 weeks). Upon delivery aliquot. Store at -20°C long term. Avoid freeze / thaw cycle.
Storage buffer	Preservative: 0.07% Sodium azide Constituents: PBS, 50% Glycerol
Purity	Protein G purified
Clonality	Monoclonal
Clone number	S128
Isotype	IgG1

Applications

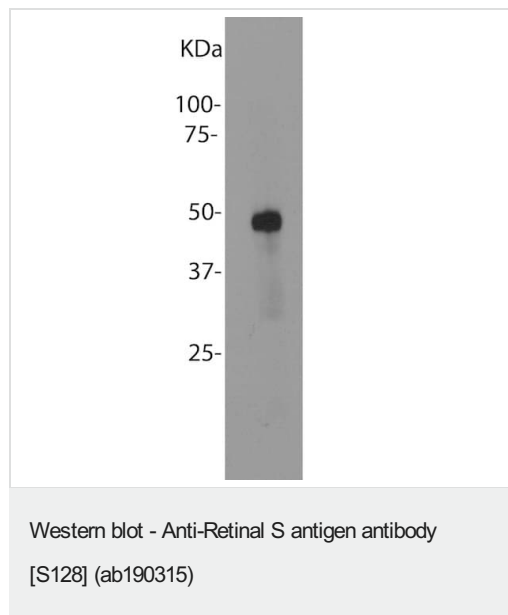
The Abpromise guarantee Our **Abpromise guarantee** covers the use of ab190315 in the following tested applications. The application notes include recommended starting dilutions; optimal dilutions/concentrations should be determined by the end user.

Application	Abreviews	Notes
WB		1/5000. Detects a band of approximately 48 kDa (predicted molecular weight: 45 kDa).
IHC-Fr		Use at an assay dependent concentration.

Target

Function	Arrestin is one of the major proteins of the ros (retinal rod outer segments); it binds to photoactivated-phosphorylated rhodopsin, thereby apparently preventing the transducin-mediated activation of phosphodiesterase.
Tissue specificity	Retina and pineal gland.
Involvement in disease	Defects in SAG are a cause of congenital stationary night blindness Oguchi type 1 (CSNBO1) [MIM:258100]; also known as Oguchi disease. Congenital stationary night blindness is a non-progressive retinal disorder characterized by impaired night vision. CSNBO is an autosomal recessive form associated with fundus discoloration and abnormally slow dark adaptation.
Sequence similarities	Belongs to the arrestin family.

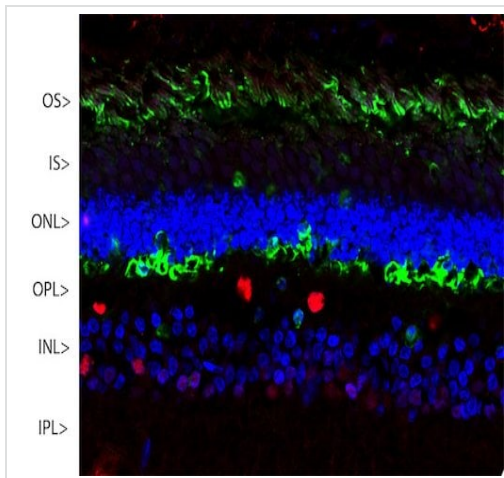
Images



Anti-Retinal S antigen antibody [S128] (ab190315) at 1/5000 dilution + Bovine retinal extract

Predicted band size: 45 kDa

Observed band size: 48 kDa



Immunohistochemistry (Frozen sections) - Anti-Retinal S antigen antibody [S128] (ab190315)

Confocal analysis of pig retina labeling Retinal S antigen with ab190315 at 1/1000 dilution (green). The red stain is Fox2, an RNA binding nuclear protein related to Fox3/NeuN, which stains nuclei of horizontal neurons and some other neurons in the INL and IPL. Nuclear DNA was revealed with DAPI (blue).

Please note: All products are "FOR RESEARCH USE ONLY. NOT FOR USE IN DIAGNOSTIC PROCEDURES"

Our Abpromise to you: Quality guaranteed and expert technical support

- Replacement or refund for products not performing as stated on the datasheet
- Valid for 12 months from date of delivery
- Response to your inquiry within 24 hours
- We provide support in Chinese, English, French, German, Japanese and Spanish
- Extensive multi-media technical resources to help you
- We investigate all quality concerns to ensure our products perform to the highest standards

If the product does not perform as described on this datasheet, we will offer a refund or replacement. For full details of the Abpromise, please visit <https://www.abcam.com/abpromise> or contact our technical team.

Terms and conditions

- Guarantee only valid for products bought direct from Abcam or one of our authorized distributors