

Product datasheet

Anti-retinoblastoma like 2 antibody - C-terminal ab189647

[1 References](#) [1 Image](#)

Overview

Product name	Anti-retinoblastoma like 2 antibody - C-terminal
Description	Rabbit polyclonal to retinoblastoma like 2 - C-terminal
Host species	Rabbit
Tested applications	Suitable for: IHC-P
Species reactivity	Reacts with: Human
Immunogen	Synthetic peptide corresponding to Human retinoblastoma like 2 (C terminal) conjugated to Keyhole Limpet Haemocyanin (KLH). (NP_005602.3) Database link: Q08999
General notes	<p>The Life Science industry has been in the grips of a reproducibility crisis for a number of years. Abcam is leading the way in addressing this with our range of recombinant monoclonal antibodies and knockout edited cell lines for gold-standard validation. Please check that this product meets your needs before purchasing.</p> <p>If you have any questions, special requirements or concerns, please send us an inquiry and/or contact our Support team ahead of purchase. Recommended alternatives for this product can be found below, along with publications, customer reviews and Q&As</p>

Properties

Form	Liquid
Storage instructions	Shipped at 4°C. Store at +4°C short term (1-2 weeks). Upon delivery aliquot. Store at -20°C long term. Avoid freeze / thaw cycle.
Storage buffer	pH: 7.20 Preservative: 0.01% Sodium azide Constituents: 0.42% Potassium phosphate, 0.87% Sodium chloride
Purification notes	ab189647 has been delipidated and defibrinated.
Clonality	Polyclonal
Isotype	IgG

Applications

The Abpromise guarantee

Our **Abpromise guarantee** covers the use of ab189647 in the following tested applications.

The application notes include recommended starting dilutions; optimal dilutions/concentrations should be determined by the end user.

Application	Abreviews	Notes
IHC-P		1/500. Perform heat mediated antigen retrieval before commencing with IHC staining protocol.

Target

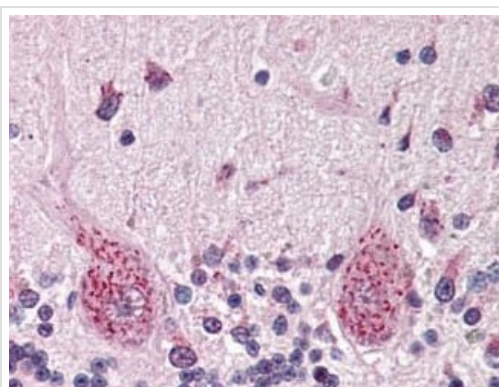
Relevance

Retinoblastoma like 2 is directly involved in heterochromatin formation and probably acts as a transcription repressor by recruiting chromatin modifying enzymes to promoters. It is a potent inhibitor of E2F mediated transactivation and associates preferentially with E2F5. It also binds to cyclins A and E. It binds to and may be involved in the transforming capacity of the adenovirus E1A protein. It may also act as a tumor suppressor.

Cellular localization

Nuclear

Images



Immunohistochemical analysis of formalin/PFA-fixed paraffin-embedded Human brain cerebellum sections labeling retinoblastoma like 2 using ab189647 at a 1/500 dilution. After incubation with the primary antibody, slides were incubated with biotinylated secondary antibody, followed by alkaline phosphatase-streptavidin and chromogen.

Immunohistochemistry (Formalin/PFA-fixed paraffin-embedded sections) - Anti-retinoblastoma like 2 antibody - C-terminal (ab189647)

Please note: All products are "FOR RESEARCH USE ONLY. NOT FOR USE IN DIAGNOSTIC PROCEDURES"

Our Abpromise to you: Quality guaranteed and expert technical support

- Replacement or refund for products not performing as stated on the datasheet
- Valid for 12 months from date of delivery
- Response to your inquiry within 24 hours
- We provide support in Chinese, English, French, German, Japanese and Spanish
- Extensive multi-media technical resources to help you

- We investigate all quality concerns to ensure our products perform to the highest standards

If the product does not perform as described on this datasheet, we will offer a refund or replacement. For full details of the Abpromise, please visit <https://www.abcam.com/abpromise> or contact our technical team.

Terms and conditions

- Guarantee only valid for products bought direct from Abcam or one of our authorized distributors