

## Product datasheet

# Anti-RFC4 antibody [EPR14556] ab182145

Recombinant RabMAb

[3 References](#) [4 Images](#)

### Overview

<b>Product name</b>	Anti-RFC4 antibody [EPR14556]
<b>Description</b>	Rabbit monoclonal [EPR14556] to RFC4
<b>Host species</b>	Rabbit
<b>Tested applications</b>	<b>Suitable for:</b> WB, ICC/IF, IP
<b>Species reactivity</b>	<b>Reacts with:</b> Human
<b>Immunogen</b>	Synthetic peptide. This information is proprietary to Abcam and/or its suppliers.
<b>Positive control</b>	Hela, HepG2, 293T or K562 lysate, HeLa or HepG2 cells.
<b>General notes</b>	<p>This product is a recombinant monoclonal antibody, which offers several advantages including:</p> <ul style="list-style-type: none"><li>- High batch-to-batch consistency and reproducibility</li><li>- Improved sensitivity and specificity</li><li>- Long-term security of supply</li><li>- Animal-free production</li></ul> <p>For more information <a href="#">see here</a>.</p> <p>Our RabMAb<sup>®</sup> technology is a patented hybridoma-based technology for making rabbit monoclonal antibodies. For details on our patents, please refer to <a href="#">RabMAb<sup>®</sup> patents</a>.</p>

### Properties

<b>Form</b>	Liquid
<b>Storage instructions</b>	Shipped at 4°C. Store at +4°C short term (1-2 weeks). Upon delivery aliquot. Store at -20°C long term. Avoid freeze / thaw cycle.
<b>Storage buffer</b>	Preservative: 0.01% Sodium azide Constituents: 40% Glycerol (glycerin, glycerine), 0.05% BSA, 59% PBS
<b>Purity</b>	Tissue culture supernatant
<b>Clonality</b>	Monoclonal
<b>Clone number</b>	EPR14556
<b>Isotype</b>	IgG

### Applications

## Applications

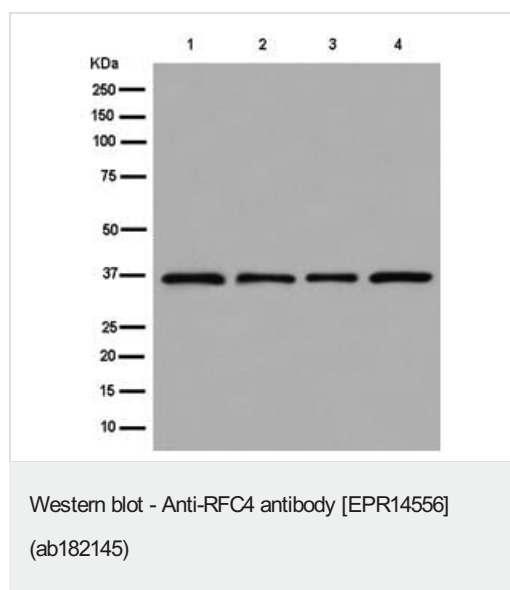
**The Abpromise guarantee** Our **Abpromise guarantee** covers the use of ab182145 in the following tested applications. The application notes include recommended starting dilutions; optimal dilutions/concentrations should be determined by the end user.

Application	Abreviews	Notes
WB		1/1000 - 1/10000. Detects a band of approximately 37 kDa.
ICC/IF		1/250.
IP		1/50.

## Target

<b>Function</b>	The elongation of primed DNA templates by DNA polymerase delta and epsilon requires the action of the accessory proteins proliferating cell nuclear antigen (PCNA) and activator 1. This subunit may be involved in the elongation of the multiprimed DNA template.
<b>Sequence similarities</b>	Belongs to the activator 1 small subunits family.
<b>Cellular localization</b>	Nucleus.

## Images



**All lanes** : Anti-RFC4 antibody [EPR14556] (ab182145) at 1/10000 dilution

**Lane 1** : HeLa cell lysate

**Lane 2** : HepG2 cell lysate

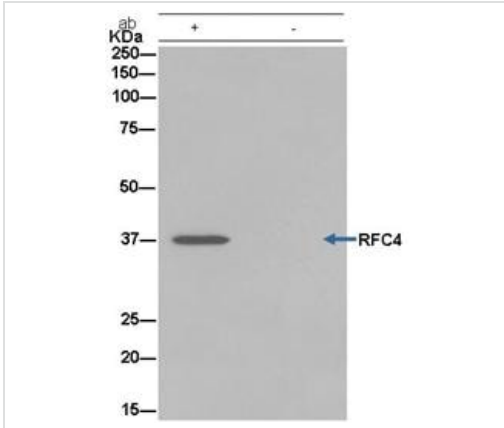
**Lane 3** : 293T (Human embryonic kidney epithelial cell) cell lysate

**Lane 4** : K562 lysate

Lysates/proteins at 20 µg per lane.

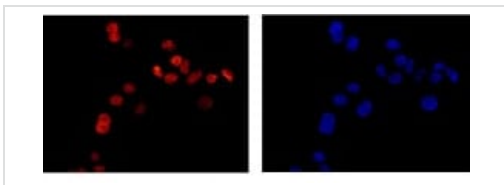
### Secondary

**All lanes** : Goat Anti-Rabbit IgG, (H+L), Peroxidase conjugated at 1/5000 dilution



Immunoprecipitation - Anti-RFC4 antibody  
[EPR14556] (ab182145)





Detection of Human RFC4 by Western Blot of Immunoprecipitate. HeLa whole cell lysate loaded, ab182145 used for blotting immunoprecipitated RFC4 at a 1/50 dilution. Anti-Rabbit IgG (HRP), specific to the non-reduced form of IgG used at a 1/1500 dilution.



Immunocytochemistry/ Immunofluorescence - Anti-RFC4 antibody [EPR14556] (ab182145)

Immunofluorescent staining of HepG2 cells(right) using anti-RFC4 Alexa Fluor® 555 RabMAB and HepG2 cells (left) using Dapi (blue)

Why choose a recombinant antibody?

 <p><b>Research with confidence</b> Consistent and reproducible results</p>	 <p><b>Long-term and scalable supply</b> Recombinant technology</p>
 <p><b>Success from the first experiment</b> Confirmed specificity</p>	 <p><b>Ethical standards compliant</b> Animal-free production</p>

Anti-RFC4 antibody [EPR14556] (ab182145)

**Please note:** All products are "FOR RESEARCH USE ONLY. NOT FOR USE IN DIAGNOSTIC PROCEDURES"

### **Our Abpromise to you: Quality guaranteed and expert technical support**

---

- Replacement or refund for products not performing as stated on the datasheet
- Valid for 12 months from date of delivery
- Response to your inquiry within 24 hours
  
- We provide support in Chinese, English, French, German, Japanese and Spanish
- Extensive multi-media technical resources to help you
- We investigate all quality concerns to ensure our products perform to the highest standards

If the product does not perform as described on this datasheet, we will offer a refund or replacement. For full details of the Abpromise, please visit <https://www.abcam.com/abpromise> or contact our technical team.

### **Terms and conditions**

---

- Guarantee only valid for products bought direct from Abcam or one of our authorized distributors