

Product datasheet

Anti-RFP antibody ab62341

★★★★★ [23 Abreviews](#) [290 References](#) [1 Image](#)

Overview

Product name	Anti-RFP antibody
Description	Rabbit polyclonal to RFP
Host species	Rabbit
Specificity	ab62341 recognizes RFP and has been shown to react with tdTomato.
Tested applications	Suitable for: WB
Species reactivity	Reacts with: Species independent
Immunogen	Recombinant full length protein corresponding to RFP. Database link: Q9U6Y8
General notes	<p>This product is manufactured by BioVision, an Abcam company and was previously called 3993 RFP (dsRed) Antibody. 3993-100 is the same size as the 100 µg size of ab62341.</p> <p>The Life Science industry has been in the grips of a reproducibility crisis for a number of years. Abcam is leading the way in addressing this with our range of recombinant monoclonal antibodies and knockout edited cell lines for gold-standard validation. Please check that this product meets your needs before purchasing.</p> <p>If you have any questions, special requirements or concerns, please send us an inquiry and/or contact our Support team ahead of purchase. Recommended alternatives for this product can be found below, along with publications, customer reviews and Q&As</p>

Properties

Form	Liquid
Storage instructions	Shipped at 4°C. Upon delivery aliquot and store at -20°C. Avoid freeze / thaw cycles.
Storage buffer	Preservative: 0.03% Proclin 300 Constituents: PBS, 30% Glycerol (glycerin, glycerine), 0.5% BSA, 0.146% EDTA
Purity	Immunogen affinity purified
Clonality	Polyclonal
Isotype	IgG

Applications

The Abpromise guarantee

Our **Abpromise guarantee** covers the use of ab62341 in the following tested applications.

The application notes include recommended starting dilutions; optimal dilutions/concentrations should be determined by the end user.

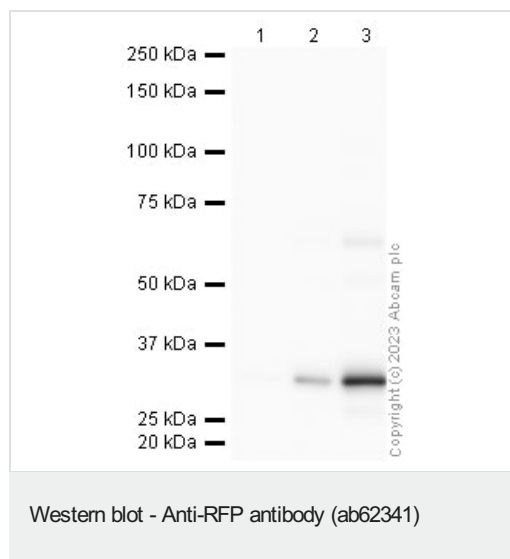
Application	Abreviews	Notes
WB	★★★★★ (8)	Use a concentration of 0.5 - 4 µg/ml. Predicted molecular weight: 27.6 kDa.

Target

Relevance

Fluorescent proteins have become a useful and ubiquitous tool for making chimeric proteins, where they function as a fluorescent protein tag. Typically they tolerate N- and C-terminal fusion to a broad variety of proteins. They have been expressed in most known cell types and are used as a noninvasive fluorescent marker in living cells and organisms. They enable a wide range of applications where they have functioned as a cell lineage tracer, reporter of gene expression, or as a measure of protein-protein interactions.

Images



All lanes : Anti-RFP antibody (ab62341) at 1 µg/ml

Lane 1 : Recombinant RFP 2ng

Lane 2 : Recombinant RFP 10ng

Lane 3 : Recombinant RFP 50ng

Secondary

All lanes : Goat polyclonal to Rabbit IgG - H&L - Pre-Adsorbed (HRP) at 1/50000 dilution

Predicted band size: 27.6 kDa

Observed band size: 32 kDa

Blocking Buffer - 3% Milk

Please note: All products are "FOR RESEARCH USE ONLY. NOT FOR USE IN DIAGNOSTIC PROCEDURES"

Our Abpromise to you: Quality guaranteed and expert technical support

- Replacement or refund for products not performing as stated on the datasheet
- Valid for 12 months from date of delivery
- Response to your inquiry within 24 hours

- We provide support in Chinese, English, French, German, Japanese and Spanish
- Extensive multi-media technical resources to help you
- We investigate all quality concerns to ensure our products perform to the highest standards

If the product does not perform as described on this datasheet, we will offer a refund or replacement. For full details of the Abpromise, please visit <https://www.abcam.com/abpromise> or contact our technical team.

Terms and conditions

- Guarantee only valid for products bought direct from Abcam or one of our authorized distributors