

Anti-RFP antibody [RF5R] ab125244

[1 Abreviews](#) [11 References](#) [1 Image](#)

Overview

Product name	Anti-RFP antibody [RF5R]
Description	Mouse monoclonal [RF5R] to RFP
Host species	Mouse
Specificity	Recognizes native and denatured forms of RFP and its turbo-RFP, DsRed variants
Tested applications	Suitable for: WB
Species reactivity	Reacts with: Species independent
Immunogen	Synthetic peptide. This information is proprietary to Abcam and/or its suppliers.
Positive control	Transfected HEK293 cell lysate.
General notes	<p>Store at 4°C (add 0.1% NaN₃) for several days to weeks.</p> <p>This product was changed from ascites to tissue culture supernatant on 5th February 2018. Please note that the dilutions may need to be adjusted accordingly. If you have any questions, please do not hesitate to contact our scientific support team.</p> <p>The Life Science industry has been in the grips of a reproducibility crisis for a number of years. Abcam is leading the way in addressing this with our range of recombinant monoclonal antibodies and knockout edited cell lines for gold-standard validation. Please check that this product meets your needs before purchasing.</p> <p>If you have any questions, special requirements or concerns, please send us an inquiry and/or contact our Support team ahead of purchase. Recommended alternatives for this product can be found below, along with publications, customer reviews and Q&As</p>

Properties

Form	Liquid
Storage instructions	Shipped at 4°C. Store at +4°C short term (1-2 weeks). Upon delivery aliquot. Store at -20°C long term. Avoid freeze / thaw cycle.
Storage buffer	<p>pH: 7.20</p> <p>Preservative: 0.05% Sodium azide</p> <p>Constituent: 99% PBS</p>
Purity	Protein A purified
Purification notes	ab125244 is purified by protein A affinity chromatography from TCS

Clonality	Monoclonal
Clone number	RF5R
Isotype	IgG1

Applications

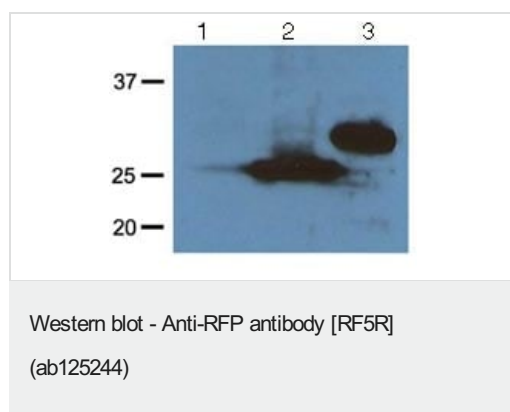
The Abpromise guarantee Our **Abpromise guarantee** covers the use of ab125244 in the following tested applications. The application notes include recommended starting dilutions; optimal dilutions/concentrations should be determined by the end user.

Application	Abreviews	Notes
WB		1/1000 - 1/3000. Predicted molecular weight: 26 kDa. Sensitivity with ECL: 1-10ng of purified RFP or RFP fusion proteins.

Target

Relevance Fluorescent proteins have become a useful and ubiquitous tool for making chimeric proteins, where they function as a fluorescent protein tag. Typically they tolerate N- and C-terminal fusion to a broad variety of proteins. They have been expressed in most known cell types and are used as a noninvasive fluorescent marker in living cells and organisms. They enable a wide range of applications where they have functioned as a cell lineage tracer, reporter of gene expression, or as a measure of protein-protein interactions.

Images



All lanes : Anti-RFP antibody [RF5R] (ab125244) at 1/1000 dilution

Lane 1 : HEK293 cell lysate, non-transfected

Lane 2 : HEK293 cell lysate, Turbo-RFP-transfected

Lane 3 : HEK293 cell lysate, DsRed-transfected

Developed using the ECL technique.

Predicted band size: 26 kDa

Please note: All products are "FOR RESEARCH USE ONLY. NOT FOR USE IN DIAGNOSTIC PROCEDURES"

Our Abpromise to you: Quality guaranteed and expert technical support

- Replacement or refund for products not performing as stated on the datasheet

- Valid for 12 months from date of delivery
- Response to your inquiry within 24 hours
- We provide support in Chinese, English, French, German, Japanese and Spanish
- Extensive multi-media technical resources to help you
- We investigate all quality concerns to ensure our products perform to the highest standards

If the product does not perform as described on this datasheet, we will offer a refund or replacement. For full details of the Abpromise, please visit <https://www.abcam.com/abpromise> or contact our technical team.

Terms and conditions

- Guarantee only valid for products bought direct from Abcam or one of our authorized distributors