


## Product datasheet

### Anti-RFX5 antibody ab9255

★★★★★ [1 Abreviews](#) [4 References](#) [1 Image](#)

#### Overview

<b>Product name</b>	Anti-RFX5 antibody
<b>Description</b>	Rabbit polyclonal to RFX5
<b>Host species</b>	Rabbit
<b>Tested applications</b>	<b>Suitable for:</b> WB
<b>Species reactivity</b>	<b>Reacts with:</b> Human <b>Predicted to work with:</b> Chimpanzee, Gorilla 
<b>Immunogen</b>	Synthetic peptide (Human) conjugated to KLH - which represents a portion of human Regulatory Factor X 5 (GenBank PID 4557543).
<b>General notes</b>	<p>The Life Science industry has been in the grips of a reproducibility crisis for a number of years. Abcam is leading the way in addressing this with our range of recombinant monoclonal antibodies and knockout edited cell lines for gold-standard validation. Please check that this product meets your needs before purchasing.</p> <p>If you have any questions, special requirements or concerns, please send us an inquiry and/or contact our Support team ahead of purchase. Recommended alternatives for this product can be found below, along with publications, customer reviews and Q&amp;As</p>

#### Properties

<b>Form</b>	Liquid
<b>Storage instructions</b>	Shipped at 4°C. Upon delivery aliquot and store at -20°C. Avoid freeze / thaw cycles.
<b>Storage buffer</b>	pH: 7 Preservative: 0.1% Sodium azide Constituents: 0.021% PBS, 1.764% Sodium citrate, 1.815% Tris
<b>Purity</b>	Immunogen affinity purified
<b>Purification notes</b>	Antibodies were affinity purified using the peptide immobilized on solid support. Antibody concentration was determined by extinction coefficient: absorbance at 280 nm of 1.4 equals 1.0 mg of IgG.
<b>Clonality</b>	Polyclonal
<b>Isotype</b>	IgG

## Applications

### The Abpromise guarantee

Our **Abpromise guarantee** covers the use of ab9255 in the following tested applications.

The application notes include recommended starting dilutions; optimal dilutions/concentrations should be determined by the end user.

Application	Abreviews	Notes
WB	★★★★★ (1)	1/500 - 1/5000. Detects a band of approximately 70 kDa (predicted molecular weight: 68 kDa).

## Target

### Function

Activates transcription from class II MHC promoters. Recognizes X-boxes. Mediates cooperative binding between RFX and NF-Y. RFX binds the X1 box of MHC-II promoters.

### Tissue specificity

Ubiquitous.

### Involvement in disease

Defects in RFX5 are a cause of bare lymphocyte syndrome type 2 (BLS2) [MIM:209920]; also known as hereditary MHC class II deficiency or HLA class II-deficient combined immunodeficiency. BLS2 is a severe combined immunodeficiency disease with early onset. It is characterized by a profound defect in constitutive and interferon-gamma induced MHC II expression, absence of cellular and humoral T-cell response to antigen challenge, hypogammaglobulinemia and impaired antibody production. The consequence include extreme susceptibility to viral, bacterial and fungal infections.

### Sequence similarities

Belongs to the RFX family.  
Contains 1 RFX-type winged-helix DNA-binding domain.

### Domain

The N-terminus is required for dimer formation, association with RFXANK and RFXAP, assembly of the RFX complex, and for binding of this complex to its X box target site in the MHC-II promoter. The C-terminus mediates cooperative binding between the RFX complex and NF-Y.

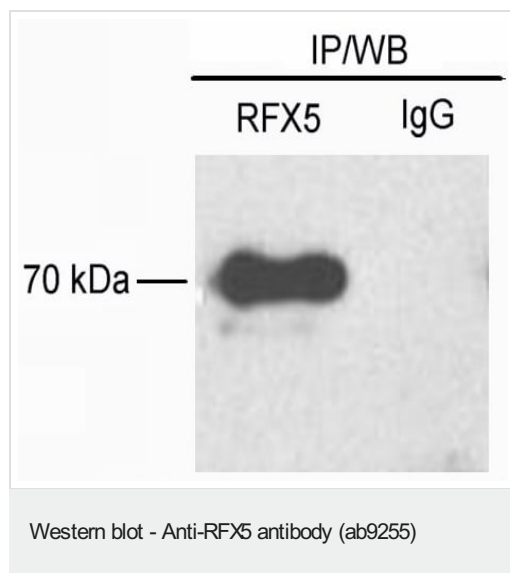
### Post-translational modifications

Phosphorylated.

### Cellular localization

Nucleus.

## Images



ab9255 at a 1:1000 dilution staining RFX5 in 500µg of HeLa Nuclear Extract by Western Blot (ECL). Immunoprecipitation was performed prior to Western Blotting with 2.0µg of ab9255.

ab9255 at a 1:1000 dilution staining RFX5 in 500µg of HeLa Nuclear Extract by Western Blot (ECL). Immunoprecipitation was performed prior to Western Blotting with 2.0µg of ab9255.

**Please note:** All products are "FOR RESEARCH USE ONLY. NOT FOR USE IN DIAGNOSTIC PROCEDURES"

### Our Abpromise to you: Quality guaranteed and expert technical support

- Replacement or refund for products not performing as stated on the datasheet
- Valid for 12 months from date of delivery
- Response to your inquiry within 24 hours
- We provide support in Chinese, English, French, German, Japanese and Spanish
- Extensive multi-media technical resources to help you
- We investigate all quality concerns to ensure our products perform to the highest standards

If the product does not perform as described on this datasheet, we will offer a refund or replacement. For full details of the Abpromise, please visit <https://www.abcam.com/abpromise> or contact our technical team.

### Terms and conditions

- Guarantee only valid for products bought direct from Abcam or one of our authorized distributors