


Anti-RGNEF antibody ab157095

[2 References](#) [2 Images](#)

Overview

Product name	Anti-RGNEF antibody
Description	Rabbit polyclonal to RGNEF
Host species	Rabbit
Tested applications	Suitable for: WB, IP
Species reactivity	Reacts with: Human Predicted to work with: Non human primates, Rhesus monkey, Gorilla, Orangutan 
Immunogen	Synthetic peptide corresponding to Human RGNEF aa 1650-1750. Database link: Q8N1W1
Positive control	HeLa, 293T and Jurkat whole cell lysate (ab7899).
General notes	<p>The Life Science industry has been in the grips of a reproducibility crisis for a number of years. Abcam is leading the way in addressing this with our range of recombinant monoclonal antibodies and knockout edited cell lines for gold-standard validation. Please check that this product meets your needs before purchasing.</p> <p>If you have any questions, special requirements or concerns, please send us an inquiry and/or contact our Support team ahead of purchase. Recommended alternatives for this product can be found below, along with publications, customer reviews and Q&As</p>

Properties

Form	Liquid
Storage instructions	Shipped at 4°C. Store at +4°C.
Storage buffer	pH: 7 Preservative: 0.09% Sodium azide Constituent: 99% Tris citrate/phosphate
	pH 7-8
Purity	Immunogen affinity purified
Clonality	Polyclonal
Isotype	IgG

Applications

The Abpromise guarantee

Our **Abpromise guarantee** covers the use of ab157095 in the following tested applications.

The application notes include recommended starting dilutions; optimal dilutions/concentrations should be determined by the end user.

Application	Abreviews	Notes
WB		1/1000 - 1/5000. Predicted molecular weight: 192 kDa.
IP		Use at 2-10 µg/mg of lysate.

Target

Function

Functions as a RHOA-specific guanine nucleotide exchange factor regulating signaling pathways downstream of integrins and growth factor receptors. Functions in axonal branching, synapse formation and dendritic morphogenesis. Functions also in focal adhesion formation, cell motility and B-lymphocytes activation. May regulate NEFL expression and aggregation and play a role in apoptosis.

Sequence similarities

Contains 1 DH (DBL-homology) domain.
Contains 1 PH domain.
Contains 1 phorbol-ester/DAG-type zinc finger.

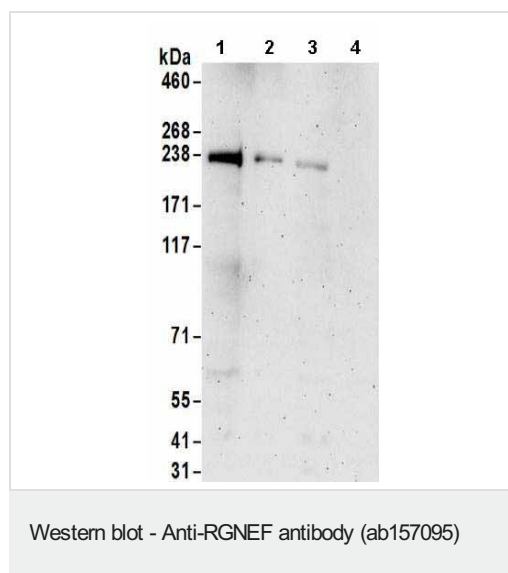
Post-translational modifications

Phosphorylated on tyrosine upon stimulation of cells by laminin.

Cellular localization

Cytoplasm. Cell membrane. Colocalizes with the microtubule radial and cortical systems.

Images



All lanes : Anti-RGNEF antibody (ab157095) at 0.4 µg/ml

Lane 1 : HeLa whole cell lysate at 50 µg

Lane 2 : HeLa whole cell lysate at 15 µg

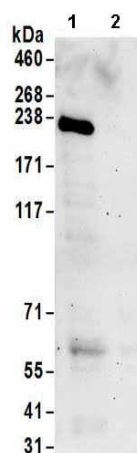
Lane 3 : 293T whole cell lysate at 50 µg

Lane 4 : Jurkat whole cell lysate at 50 µg

Developed using the ECL technique.

Predicted band size: 192 kDa

Exposure time: 3 minutes



Immunoprecipitation. ab157095 at 1 µg/ml staining RGNEF in HeLa whole cell lysate immunoprecipitated using ab157095 at 6 µg/mg lysate (1 mg/IP; 20% of IP loaded/lane). Lane 2: Control IgG. Predicted band size : 192 kDa. Exposure time: 3 minutes

Immunoprecipitation - Anti-RGNEF antibody
(ab157095)

Please note: All products are "FOR RESEARCH USE ONLY. NOT FOR USE IN DIAGNOSTIC PROCEDURES"

Our Abpromise to you: Quality guaranteed and expert technical support

- Replacement or refund for products not performing as stated on the datasheet
- Valid for 12 months from date of delivery
- Response to your inquiry within 24 hours
- We provide support in Chinese, English, French, German, Japanese and Spanish
- Extensive multi-media technical resources to help you
- We investigate all quality concerns to ensure our products perform to the highest standards

If the product does not perform as described on this datasheet, we will offer a refund or replacement. For full details of the Abpromise, please visit <https://www.abcam.com/abpromise> or contact our technical team.

Terms and conditions

- Guarantee only valid for products bought direct from Abcam or one of our authorized distributors