

Anti-RGS4 antibody ab97307

[1 References](#) [5 Images](#)

Overview

Product name	Anti-RGS4 antibody
Description	Rabbit polyclonal to RGS4
Host species	Rabbit
Tested applications	Suitable for: IHC-P, WB
Species reactivity	Reacts with: Mouse, Rat, Human
Immunogen	Recombinant fragment, corresponding to a region within amino acids 1-198 of Human RGS4 (AAH00737)
Positive control	WB: Raji cell lysate, rat and mouse brain tissue extract; IHC-P: Human breast cancer and mouse muscle tissue.
General notes	<p>The Life Science industry has been in the grips of a reproducibility crisis for a number of years. Abcam is leading the way in addressing this with our range of recombinant monoclonal antibodies and knockout edited cell lines for gold-standard validation. Please check that this product meets your needs before purchasing.</p> <p>If you have any questions, special requirements or concerns, please send us an inquiry and/or contact our Support team ahead of purchase. Recommended alternatives for this product can be found below, along with publications, customer reviews and Q&As</p>

Properties

Form	Liquid
Storage instructions	Shipped at 4°C. Store at +4°C short term (1-2 weeks). Upon delivery aliquot. Store at -20°C or -80°C. Avoid freeze / thaw cycle.
Storage buffer	<p>pH: 7.00</p> <p>Preservative: 0.01% Thimerosal (merthiolate)</p> <p>Constituents: 1.21% Tris, 0.75% Glycine, 20% Glycerol (glycerin, glycerine)</p>
Purity	Immunogen affinity purified
Clonality	Polyclonal
Isotype	IgG

Applications

The Abpromise guarantee

Our **Abpromise guarantee** covers the use of ab97307 in the following tested applications.

The application notes include recommended starting dilutions; optimal dilutions/concentrations should be determined by the end user.

Application	Abreviews	Notes
IHC-P		1/100 - 1/1000.
WB		1/500 - 1/3000. Predicted molecular weight: 23 kDa.

Target

Function

Inhibits signal transduction by increasing the GTPase activity of G protein alpha subunits thereby driving them into their inactive GDP-bound form. Activity on G(z)-alpha is inhibited by phosphorylation of the G-protein. Activity on G(z)-alpha and G(i)-alpha-1 is inhibited by palmitoylation of the G-protein.

Involvement in disease

Genetic variation in RGS4 is associated with susceptibility to schizophrenia type 9 (SCZD9) [MIM:604906]. A complex, multifactorial psychotic disorder or group of disorders characterized by disturbances in the form and content of thought (e.g. delusions, hallucinations), in mood (e.g. inappropriate affect), in sense of self and relationship to the external world (e.g. loss of ego boundaries, withdrawal), and in behavior (e.g. bizarre or apparently purposeless behavior). Although it affects emotions, it is distinguished from mood disorders in which such disturbances are primary. Similarly, there may be mild impairment of cognitive function, and it is distinguished from the dementias in which disturbed cognitive function is considered primary. Some patients manifest schizophrenic as well as bipolar disorder symptoms and are often given the diagnosis of schizoaffective disorder.

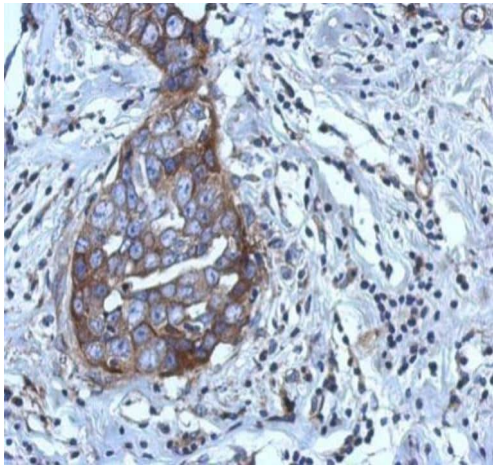
Sequence similarities

Contains 1 RGS domain.

Post-translational modifications

Palmitoylated on Cys-2 and/or Cys-12.
Phosphorylated by cyclic GMP-dependent protein kinase.

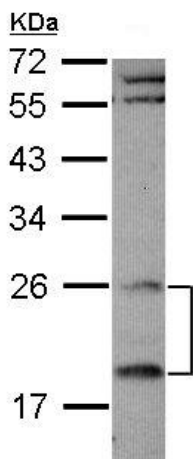
Images



Immunohistochemistry (Formalin/PFA-fixed paraffin-embedded sections) - Anti-RGS4 antibody (ab97307)

Immunohistochemical analysis of paraffin-embedded human breast cancer tissue staining RGS4 with ab97307 at 1:500 dilution.

Antigen Retrieval: EDTA based buffer, pH 8.0, 15min.



Western blot - Anti-RGS4 antibody (ab97307)

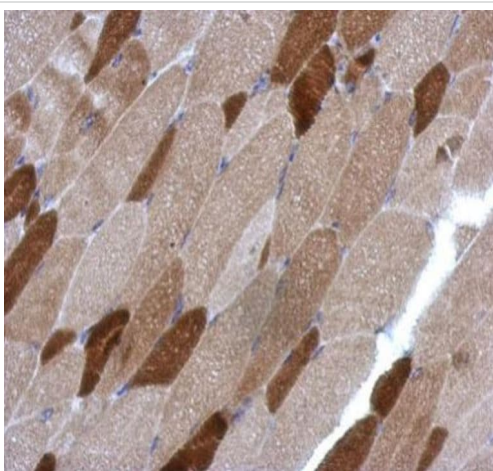
Anti-RGS4 antibody (ab97307) at 1/1000 dilution + Raji (human Burkitt's lymphoma cell line) whole cell lysate at 30 µg

Secondary

HRP-conjugated anti-rabbit IgG antibody

Predicted band size: 23 kDa

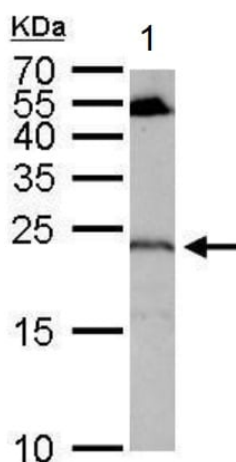
12% SDS-PAGE



Immunohistochemistry (Formalin/PFA-fixed paraffin-embedded sections) - Anti-RGS4 antibody (ab97307)

Immunohistochemical analysis of paraffin-embedded mouse muscle tissue staining RGS4 with ab97307 at 1:500 dilution.

Antigen Retrieval: EDTA based buffer, pH 8.0, 15min.



Western blot - Anti-RGS4 antibody (ab97307)

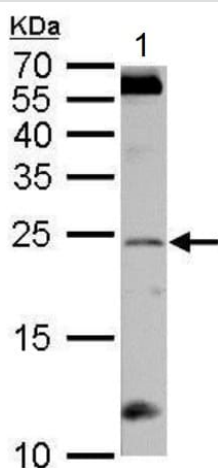
Anti-RGS4 antibody (ab97307) at 1/1000 dilution + Mouse cerebellum tissue extract at 50 µg

Secondary

HRP-conjugated anti-rabbit IgG antibody

Predicted band size: 23 kDa

12% SDS-PAGE



Western blot - Anti-RGS4 antibody (ab97307)

Anti-RGS4 antibody (ab97307) at 1/1000 dilution + Rat brain tissue extract at 50 µg

Secondary

HRP-conjugated anti-rabbit IgG antibody

Predicted band size: 23 kDa

12% SDS-PAGE

Please note: All products are "FOR RESEARCH USE ONLY. NOT FOR USE IN DIAGNOSTIC PROCEDURES"

Our Abpromise to you: Quality guaranteed and expert technical support

- Replacement or refund for products not performing as stated on the datasheet
- Valid for 12 months from date of delivery
- Response to your inquiry within 24 hours
- We provide support in Chinese, English, French, German, Japanese and Spanish
- Extensive multi-media technical resources to help you
- We investigate all quality concerns to ensure our products perform to the highest standards

If the product does not perform as described on this datasheet, we will offer a refund or replacement. For full details of the Abpromise, please visit <https://www.abcam.com/abpromise> or contact our technical team.

Terms and conditions

- Guarantee only valid for products bought direct from Abcam or one of our authorized distributors