


## Product datasheet

### Anti-RGS5 antibody ab196799

★★★★★ [1 Abreviews](#) [7 References](#) [2 Images](#)

#### Overview

<b>Product name</b>	Anti-RGS5 antibody
<b>Description</b>	Rabbit polyclonal to RGS5
<b>Host species</b>	Rabbit
<b>Tested applications</b>	<b>Suitable for:</b> IHC-P, WB
<b>Species reactivity</b>	<b>Reacts with:</b> Mouse, Human <b>Predicted to work with:</b> Rat 
<b>Immunogen</b>	Synthetic peptide within Human RGS5 (internal sequence). The exact sequence is proprietary. Database link: <a href="#">O15539</a>
<b>Positive control</b>	Human breast carcinoma tissue. Extracts from NIH/3T3.
<b>General notes</b>	<p>The Life Science industry has been in the grips of a reproducibility crisis for a number of years. Abcam is leading the way in addressing this with our range of recombinant monoclonal antibodies and knockout edited cell lines for gold-standard validation. Please check that this product meets your needs before purchasing.</p> <p>If you have any questions, special requirements or concerns, please send us an inquiry and/or contact our Support team ahead of purchase. Recommended alternatives for this product can be found below, along with publications, customer reviews and Q&amp;As</p>

#### Properties

<b>Form</b>	Liquid
<b>Storage instructions</b>	Shipped at 4°C. Store at +4°C short term (1-2 weeks). Upon delivery aliquot. Store at -20°C long term. Avoid freeze / thaw cycle.
<b>Storage buffer</b>	pH: 7.40 Preservative: 0.02% Sodium azide Constituents: 50% Glycerol (glycerin, glycerine), 0.87% Sodium chloride, 49% PBS
<b>Purity</b>	Immunogen affinity purified
<b>Clonality</b>	Polyclonal
<b>Isotype</b>	IgG

#### Applications

## The Abpromise guarantee

Our **Abpromise guarantee** covers the use of ab196799 in the following tested applications.

The application notes include recommended starting dilutions; optimal dilutions/concentrations should be determined by the end user.

Application	Abreviews	Notes
IHC-P	★★★★★ (1)	1/50 - 1/100.
WB		1/500 - 1/3000. Predicted molecular weight: 21 kDa.

## Target

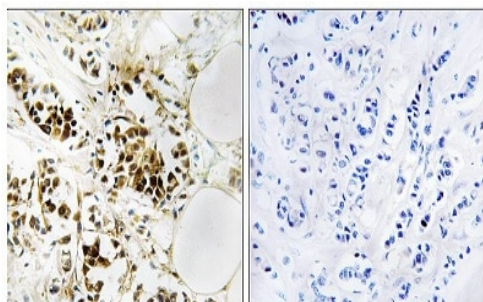
### Function

Inhibits signal transduction by increasing the GTPase activity of G protein alpha subunits thereby driving them into their inactive GDP-bound form. Binds to G(i)-alpha and G(o)-alpha, but not to G(s)-alpha.

### Sequence similarities

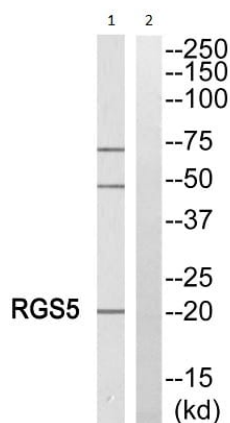
Contains 1 RGS domain.

## Images



Immunohistochemistry (Formalin/PFA-fixed paraffin-embedded sections) - Anti-RGS5 antibody (ab196799)

Immunohistochemical analysis of formalin/PFA-fixed paraffin-embedded human breast carcinoma tissue sections labeling RGS5 with ab196799 at a 1/50 dilution. Right image treated with synthesized peptide.



Western blot - Anti-RGS5 antibody (ab196799)

**All lanes** : Anti-RGS5 antibody (ab196799) at 1/500 dilution

**Lane 1** : Extracts from NIH/3T3 cells

**Lane 2** : Extracts from NIH/3T3 cells with synthesized peptide

**Predicted band size:** 21 kDa

**Please note:** All products are "FOR RESEARCH USE ONLY. NOT FOR USE IN DIAGNOSTIC PROCEDURES"

### **Our Abpromise to you: Quality guaranteed and expert technical support**

---

- Replacement or refund for products not performing as stated on the datasheet
- Valid for 12 months from date of delivery
- Response to your inquiry within 24 hours
- We provide support in Chinese, English, French, German, Japanese and Spanish
- Extensive multi-media technical resources to help you
- We investigate all quality concerns to ensure our products perform to the highest standards

If the product does not perform as described on this datasheet, we will offer a refund or replacement. For full details of the Abpromise, please visit <https://www.abcam.com/abpromise> or contact our technical team.

### **Terms and conditions**

---

- Guarantee only valid for products bought direct from Abcam or one of our authorized distributors