



Product datasheet

Anti-RHCG antibody ab187904

[1 References](#) [6 Images](#)

Overview

Product name	Anti-RHCG antibody
Description	Rabbit polyclonal to RHCG
Host species	Rabbit
Tested applications	Suitable for: WB, IHC-P
Species reactivity	Reacts with: Human
Immunogen	Recombinant fragment corresponding to Human RHCG aa 1-100. Database link: Q9UBD6 <div>  Run BLAST with  Run BLAST with </div>
Positive control	WB: Human plasma, Human tonsil. IHC-P: Human tonsil, Esophagus, kidney tissues.
General notes	<p>The Life Science industry has been in the grips of a reproducibility crisis for a number of years. Abcam is leading the way in addressing this with our range of recombinant monoclonal antibodies and knockout edited cell lines for gold-standard validation. Please check that this product meets your needs before purchasing.</p> <p>If you have any questions, special requirements or concerns, please send us an inquiry and/or contact our Support team ahead of purchase. Recommended alternatives for this product can be found below, along with publications, customer reviews and Q&As</p>

Properties

Form	Liquid
Storage instructions	Shipped at 4°C. Store at +4°C short term (1-2 weeks). Upon delivery aliquot. Store at -20°C long term. Avoid freeze / thaw cycle.
Storage buffer	pH: 7.20 Preservative: 0.02% Sodium azide Constituents: 40% Glycerol (glycerin, glycerine), 59% PBS
Purity	Immunogen affinity purified
Clonality	Polyclonal
Isotype	IgG

Applications

The Abpromise guarantee

Our **Abpromise guarantee** covers the use of ab187904 in the following tested applications.

The application notes include recommended starting dilutions; optimal dilutions/concentrations should be determined by the end user.

Application	Abreviews	Notes
WB		Use a concentration of 0.04 - 0.4 µg/ml. Predicted molecular weight: 53 kDa.
IHC-P		1/1000 - 1/2500. Perform heat mediated antigen retrieval with citrate buffer pH 6 before commencing with IHC staining protocol.

Target

Function

Functions as an electroneutral and bidirectional ammonium transporter. May regulate transepithelial ammonia secretion.

Tissue specificity

Expressed in brain, testis, placenta, pancreas, esophagus and prostate. Expressed in squamous epithelial tissues (at protein level). According to PubMed:11062476, specifically expressed in kidney.

Sequence similarities

Belongs to the ammonium transporter (TC 2.A.49) family. Rh subfamily.

Developmental stage

Specifically expressed in fetal kidney.

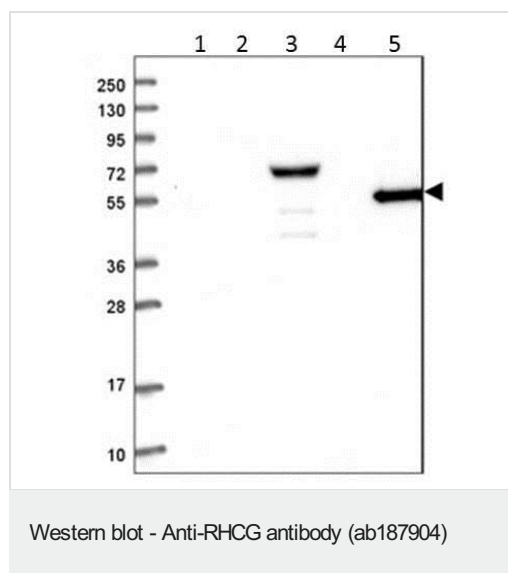
Post-translational modifications

N-glycosylated.

Cellular localization

Apical cell membrane. Also detected at the basolateral membrane and in subapical vesicles.

Images



All lanes : Anti-RHCG antibody (ab187904) at 1/100 dilution

Lane 1 : Human cell line RT-4 lysate

Lane 2 : Human cell line U-251MG sp lysate

Lane 3 : Human plasma (IgG/HSA depleted)

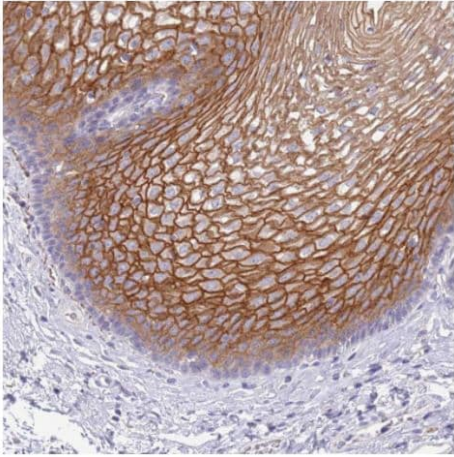
Lane 4 : Human liver tissue lysate

Lane 5 : Human tonsil tissue lysate

Developed using the ECL technique.

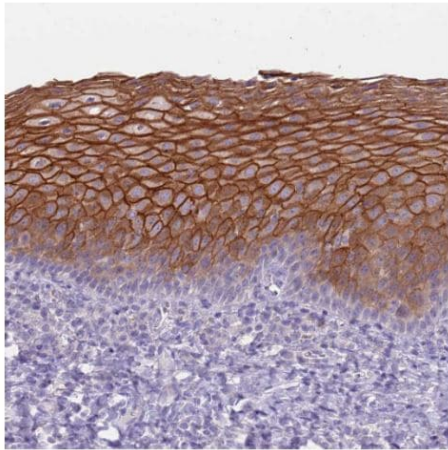
Predicted band size: 53 kDa

Exposure time: 1 minute



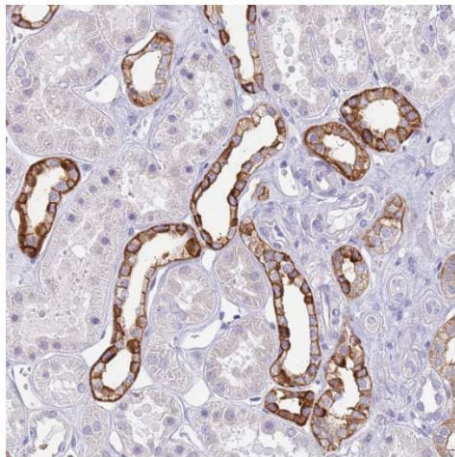
Immunohistochemical analysis showing RHCG staining in paraffin embedded Human Esophagus tissue using ab187904 at 1/1000 dilution showing positive staining in squamous epithelial cells.

Immunohistochemistry (Formalin/PFA-fixed paraffin-embedded sections) - Anti-RHCG antibody (ab187904)



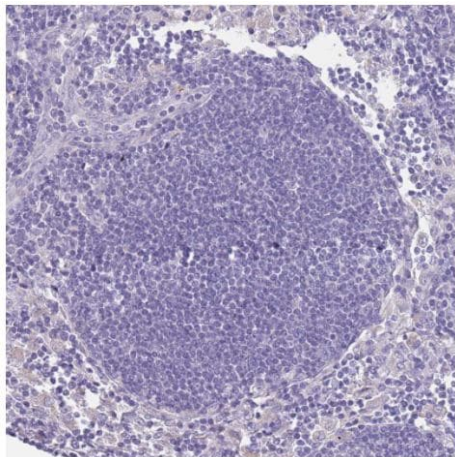
Immunohistochemical analysis showing RHCG staining in paraffin embedded Human tonsil tissue using ab187904 at 1/1000 dilution showing positive staining in squamous epithelial cells.

Immunohistochemistry (Formalin/PFA-fixed paraffin-embedded sections) - Anti-RHCG antibody (ab187904)



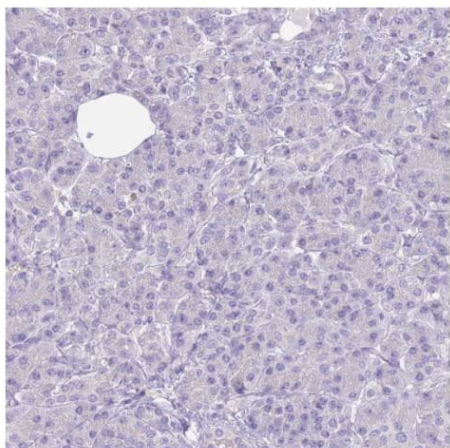
Immunohistochemical analysis showing RHCg staining in paraffin embedded Human kidney tissue using ab187904 at 1/1000 dilution showing positive staining in distal tubule cells.

Immunohistochemistry (Formalin/PFA-fixed paraffin-embedded sections) - Anti-RHCg antibody (ab187904)



Immunohistochemical analysis of paraffin embedded Human lymph node tissue (Negative control) using ab187904 at 1/1000 dilution showing no staining.

Immunohistochemistry (Formalin/PFA-fixed paraffin-embedded sections) - Anti-RHCg antibody (ab187904)



Immunohistochemical analysis of paraffin embedded Human pancreas tissue (Negative control) using ab187904 at 1/1000 dilution showing no staining.

Immunohistochemistry (Formalin/PFA-fixed paraffin-embedded sections) - Anti-RHCG antibody (ab187904)

Please note: All products are "FOR RESEARCH USE ONLY. NOT FOR USE IN DIAGNOSTIC PROCEDURES"

Our Abpromise to you: Quality guaranteed and expert technical support

- Replacement or refund for products not performing as stated on the datasheet
- Valid for 12 months from date of delivery
- Response to your inquiry within 24 hours
- We provide support in Chinese, English, French, German, Japanese and Spanish
- Extensive multi-media technical resources to help you
- We investigate all quality concerns to ensure our products perform to the highest standards

If the product does not perform as described on this datasheet, we will offer a refund or replacement. For full details of the Abpromise, please visit <https://www.abcam.com/abpromise> or contact our technical team.

Terms and conditions

- Guarantee only valid for products bought direct from Abcam or one of our authorized distributors