


Product datasheet

Anti-RHEB antibody ab109914

1 Image

Overview

Product name	Anti-RHEB antibody
Description	Rabbit polyclonal to RHEB
Host species	Rabbit
Tested applications	Suitable for: WB
Species reactivity	Reacts with: Human Predicted to work with: Rat, Rabbit, Horse, Cow, Pig, Chimpanzee, Macaque monkey, Gorilla 
Immunogen	Synthetic peptide. This information is proprietary to Abcam and/or its suppliers.
Positive control	This antibody gave a positive signal in the following whole cell lysates: Raji; SHSY5Y; EGF treated A431; Jurkat.
General notes	<p>The Life Science industry has been in the grips of a reproducibility crisis for a number of years. Abcam is leading the way in addressing this with our range of recombinant monoclonal antibodies and knockout edited cell lines for gold-standard validation. Please check that this product meets your needs before purchasing.</p> <p>If you have any questions, special requirements or concerns, please send us an inquiry and/or contact our Support team ahead of purchase. Recommended alternatives for this product can be found below, along with publications, customer reviews and Q&As</p>

Properties

Form	Liquid
Storage instructions	Shipped at 4°C. Store at +4°C short term (1-2 weeks). Upon delivery aliquot. Store at -20°C or -80°C. Avoid freeze / thaw cycle.
Storage buffer	pH: 7.40 Preservative: 0.02% Sodium azide Constituent: PBS Batches of this product that have a concentration < 1mg/ml may have BSA added as a stabilising agent. If you would like information about the formulation of a specific lot, please contact our scientific support team who will be happy to help.
Purity	Immunogen affinity purified

Clonality	Polyclonal
Isotype	IgG

Applications

The Abpromise guarantee Our **Abpromise guarantee** covers the use of ab109914 in the following tested applications.

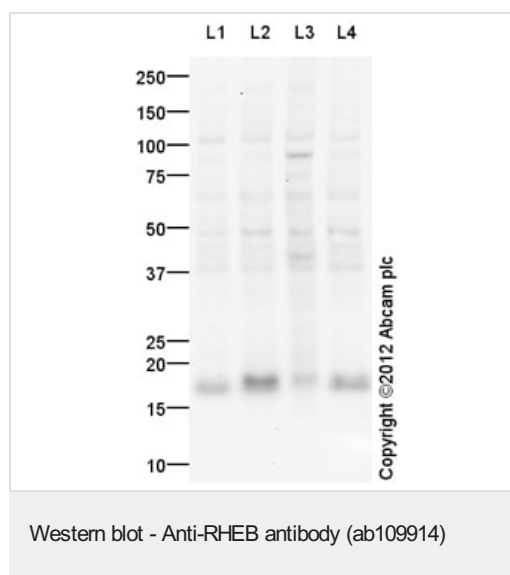
The application notes include recommended starting dilutions; optimal dilutions/concentrations should be determined by the end user.

Application	Abreviews	Notes
WB		Use a concentration of 1 µg/ml. Detects a band of approximately 18 kDa (predicted molecular weight: 20 kDa).

Target

Function	Stimulates the phosphorylation of S6K1 and EIF4EBP1 through activation of mTORC1 signaling. Activates the protein kinase activity of mTORC1. Has low intrinsic GTPase activity.
Tissue specificity	Ubiquitous. Highest levels observed in skeletal and cardiac muscle.
Sequence similarities	Belongs to the small GTPase superfamily. Rheb family.
Post-translational modifications	Farnesylation is important for efficiently activating mTORC1-mediated signaling.
Cellular localization	Cell membrane.

Images



All lanes : Anti-RHEB antibody (ab109914) at 1 µg/ml

Lane 1 : Raji (Human Burkitt's lymphoma cell line) Whole Cell Lysate

Lane 2 : SHSY-5Y (Human neuroblastoma cell line) Whole Cell Lysate

Lane 3 : EGF-Stimulated A431 Whole Cell Lysate

Lane 4 : Jurkat (Human T cell lymphoblast-like cell line) Whole Cell Lysate

Lysates/proteins at 10 µg per lane.

Secondary

All lanes : Goat Anti-Rabbit IgG H&L (HRP) (**ab97051**) at 1/10000 dilution

Developed using the ECL technique.

Performed under reducing conditions.

Predicted band size: 20 kDa

Observed band size: 18 kDa

Additional bands at: 42 kDa, 49 kDa, 95 kDa. We are unsure as to the identity of these extra bands.

Exposure time: 20 minutes

This blot was produced using a 4-12% Bis-tris gel under the MES buffer system. The gel was run at 200V for 35 minutes before being transferred onto a Nitrocellulose membrane at 30V for 70 minutes. The membrane was then blocked for an hour using 5% Bovine Serum Albumin before being incubated with ab109914 overnight at 4°C. Antibody binding was detected using an anti-rabbit antibody conjugated to HRP, and visualised using ECL development solution.

Please note: All products are "FOR RESEARCH USE ONLY. NOT FOR USE IN DIAGNOSTIC PROCEDURES"

Our Abpromise to you: Quality guaranteed and expert technical support

- Replacement or refund for products not performing as stated on the datasheet
- Valid for 12 months from date of delivery
- Response to your inquiry within 24 hours
- We provide support in Chinese, English, French, German, Japanese and Spanish
- Extensive multi-media technical resources to help you
- We investigate all quality concerns to ensure our products perform to the highest standards

If the product does not perform as described on this datasheet, we will offer a refund or replacement. For full details of the Abpromise, please visit <https://www.abcam.com/abpromise> or contact our technical team.

Terms and conditions

- Guarantee only valid for products bought direct from Abcam or one of our authorized distributors