

Anti-Rhodamine antibody [11H10] ab9093

★ ★ ★ ★ ★ [1 Abreviews](#) [5 References](#) [5 Images](#)

Overview

Product name	Anti-Rhodamine antibody [11H10]
Description	Mouse monoclonal [11H10] to Rhodamine
Host species	Mouse
Specificity	This antibody reacts specifically with Rhodamine and its derivatives. Ab9093 was raised against TRITC and reacts with rhodamine isomers 5 and 6, TAMRA, and TRITC, but it does not react with Texas Red
Tested applications	Suitable for: Dot blot, ELISA
Species reactivity	Reacts with: Species independent
Immunogen	Chemical/ Small Molecule corresponding to Rhodamine conjugated to keyhole limpet haemocyanin.
General notes	<p>The molecular formula of 5-carboxytetramethylrhodamine, succinimidyl ester (5-TAMRA, SE) is $C_{29}H_{25}N_3O_7$ The molecular weight of 5-TAMRA, SE is 527.53 This product contains 0.01% (w/v) Sodium Azide preservative.</p> <p>The Life Science industry has been in the grips of a reproducibility crisis for a number of years. Abcam is leading the way in addressing this with our range of recombinant monoclonal antibodies and knockout edited cell lines for gold-standard validation. Please check that this product meets your needs before purchasing.</p> <p>If you have any questions, special requirements or concerns, please send us an inquiry and/or contact our Support team ahead of purchase. Recommended alternatives for this product can be found below, along with publications, customer reviews and Q&As</p>

Properties

Form	Liquid
Storage instructions	Shipped at 4°C. Upon delivery aliquot and store at -20°C or -80°C. Avoid repeated freeze / thaw cycles.
Storage buffer	Preservative: 0.01% Sodium azide Constituents: 0.42% Potassium phosphate, 0.87% Sodium chloride
Purity	Protein A purified
Clonality	Monoclonal
Clone number	11H10

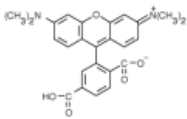
Myeloma	Sp2/0
Isotype	IgG1
Light chain type	kappa

Applications

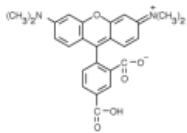
The Abpromise guarantee Our **Abpromise guarantee** covers the use of ab9093 in the following tested applications. The application notes include recommended starting dilutions; optimal dilutions/concentrations should be determined by the end user.

Application	Abreviews	Notes
Dot blot		1/2000.
ELISA		1/500 - 1/1000.

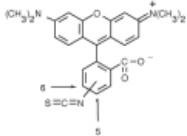
Images



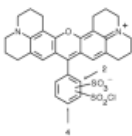
Anti-Rhodamine antibody [11H10] (ab9093)



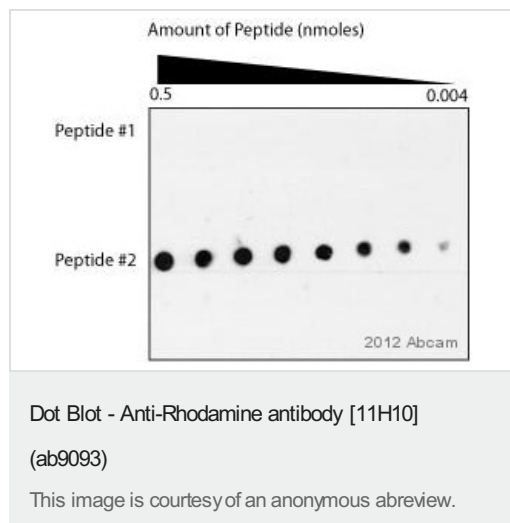
Anti-Rhodamine antibody [11H10] (ab9093)



Anti-Rhodamine antibody [11H10] (ab9093)



Anti-Rhodamine antibody [11H10] (ab9093)



A dilution series of two TAMRA labeled peptides were bound to a PVDF membrane using a dot blot apparatus. Peptide #1 is conjugated directly to TAMRA via an amide bond whereas peptide #2 contains an aminohexanoyl linker between the TAMRA and the peptide. Also note that the peptides differ in sequence and in length, peptide #1 has 15 amino acids and peptide #2 has 29 amino acids. A dilution series for each peptide was made starting with approximately 0.5 nmoles of peptide and followed by a series of 1:2 dilutions. After binding of the peptides to the PVDF membrane, the membrane was then blocked in 5% milk in 1X TBST for 1 hour at room temperature. The membrane was then incubated in with the ab9093 antibody at a 1:2000 dilution in 5% milk in 1X TBST for 1 hour at room temperature. Following incubation with the primary antibody the blot was then washed 3 times in 1X TBST and then incubated with a 1:10,000 dilution of an anti-mouse-HRP secondary antibody for 45 minutes at room temperature

Please note: All products are "FOR RESEARCH USE ONLY. NOT FOR USE IN DIAGNOSTIC PROCEDURES"

Our Abpromise to you: Quality guaranteed and expert technical support

- Replacement or refund for products not performing as stated on the datasheet
- Valid for 12 months from date of delivery
- Response to your inquiry within 24 hours
- We provide support in Chinese, English, French, German, Japanese and Spanish
- Extensive multi-media technical resources to help you
- We investigate all quality concerns to ensure our products perform to the highest standards

If the product does not perform as described on this datasheet, we will offer a refund or replacement. For full details of the Abpromise, please visit <https://www.abcam.com/abpromise> or contact our technical team.

Terms and conditions

- Guarantee only valid for products bought direct from Abcam or one of our authorized distributors