


Product datasheet

Anti-RhoGDI (phospho S174) antibody ab74142

[2 References](#) [2 Images](#)

Overview

Product name	Anti-RhoGDI (phospho S174) antibody
Description	Rabbit polyclonal to RhoGDI (phospho S174)
Host species	Rabbit
Tested applications	Suitable for: WB, IHC-P
Species reactivity	Reacts with: Human Predicted to work with: Mouse, Rat 
Immunogen	Synthetic peptide corresponding to Human RhoGDI (phospho S174). Run BLAST with ExpASY Run BLAST with NCBI
Positive control	IHC-P: Human cervix carcinoma tissue. WB: HUVEC cells treated with EGF.
General notes	<p>The Life Science industry has been in the grips of a reproducibility crisis for a number of years. Abcam is leading the way in addressing this with our range of recombinant monoclonal antibodies and knockout edited cell lines for gold-standard validation. Please check that this product meets your needs before purchasing.</p> <p>If you have any questions, special requirements or concerns, please send us an inquiry and/or contact our Support team ahead of purchase. Recommended alternatives for this product can be found below, along with publications, customer reviews and Q&As</p>

Properties

Form	Liquid
Storage instructions	Shipped at 4°C. Upon delivery aliquot and store at -20°C. Avoid freeze / thaw cycles.
Storage buffer	pH: 7.40 Preservative: 0.02% Sodium azide Constituents: 50% Glycerol (glycerin, glycerine), 0.87% Sodium chloride, PBS Without Mg ²⁺ and Ca ²⁺
Purity	Immunogen affinity purified
Purification notes	The antibody was purified by affinity chromatography using epitope specific phosphopeptide. The antibody against non phosphopeptide was removed by chromatography using non phosphopeptide corresponding to the phosphorylation site.
Clonality	Polyclonal

Isotype

IgG

Applications

The Abpromise guarantee

Our **Abpromise guarantee** covers the use of ab74142 in the following tested applications.

The application notes include recommended starting dilutions; optimal dilutions/concentrations should be determined by the end user.

Application	Abreviews	Notes
WB		1/500 - 1/1000. Predicted molecular weight: 23 kDa.
IHC-P		1/50 - 1/100.

Target

Function

Regulates the GDP/GTP exchange reaction of the Rho proteins by inhibiting the dissociation of GDP from them, and the subsequent binding of GTP to them.

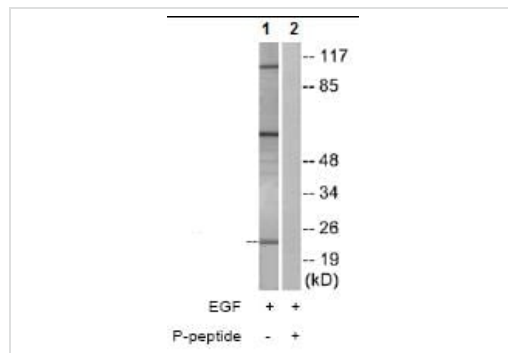
Sequence similarities

Belongs to the Rho GDI family.

Cellular localization

Cytoplasm.

Images



Western blot - Anti-RhoGDI (phospho S174) antibody (ab74142)

All lanes : Anti-RhoGDI (phospho S174) antibody (ab74142) at 1/500 dilution

Lane 1 : HUVEC cells treated with EGF (200ng/ml, 30mins)

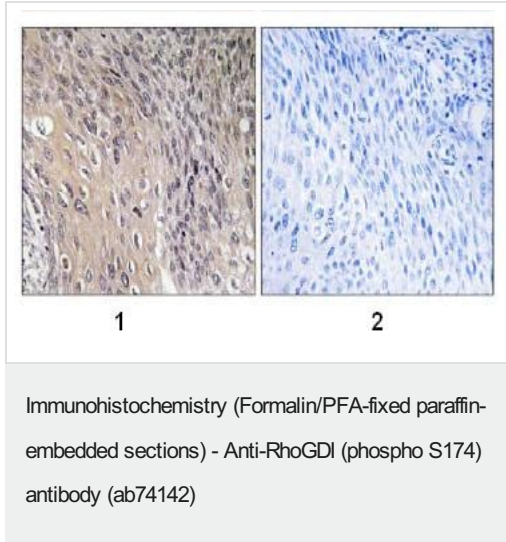
Lane 2 : HUVEC cells treated with EGF (200ng/ml, 30mins) with phosphopeptide at 10 μ g

Lysates/proteins at 30 μ g per lane.

Predicted band size: 23 kDa

Observed band size: 23 kDa

Additional bands at: 105 kDa, 60 kDa. We are unsure as to the identity of these extra bands.



Human cervix carcinoma tissue stained with ab74142 (1/50 dilution).

- 1: No phosphopeptide
- 2: Phosphopeptide

Please note: All products are "FOR RESEARCH USE ONLY. NOT FOR USE IN DIAGNOSTIC PROCEDURES"

Our Abpromise to you: Quality guaranteed and expert technical support

- Replacement or refund for products not performing as stated on the datasheet
- Valid for 12 months from date of delivery
- Response to your inquiry within 24 hours

- We provide support in Chinese, English, French, German, Japanese and Spanish
- Extensive multi-media technical resources to help you
- We investigate all quality concerns to ensure our products perform to the highest standards

If the product does not perform as described on this datasheet, we will offer a refund or replacement. For full details of the Abpromise, please visit <https://www.abcam.com/abpromise> or contact our technical team.

Terms and conditions

- Guarantee only valid for products bought direct from Abcam or one of our authorized distributors