

## Product datasheet

# Anti-RICTOR antibody [7B3] ab104838

[6 References](#) [5 Images](#)

### Overview

---

<b>Product name</b>	Anti-RICTOR antibody [7B3]
<b>Description</b>	Mouse monoclonal [7B3] to RICTOR
<b>Host species</b>	Mouse
<b>Tested applications</b>	<b>Suitable for:</b> WB, IHC-P, Flow Cyt, ICC/IF
<b>Species reactivity</b>	<b>Reacts with:</b> Mouse, Human
<b>Immunogen</b>	Purified recombinant fragment of Human RICTOR expressed in <i>E. Coli</i> .
<b>Positive control</b>	HeLa, PANC-1, MOLT4, HepG2 and HEK293 cell lysates. Thyroid gland tissues and Human breast carcinoma. NIH3T3 cells.
<b>General notes</b>	<p>This product was changed from ascites to supernatant. Lot no's high than GR173148-16 are from Tissue Culture Supernatant</p> <p>The Life Science industry has been in the grips of a reproducibility crisis for a number of years. Abcam is leading the way in addressing this with our range of recombinant monoclonal antibodies and knockout edited cell lines for gold-standard validation. Please check that this product meets your needs before purchasing.</p> <p>If you have any questions, special requirements or concerns, please send us an inquiry and/or contact our Support team ahead of purchase. Recommended alternatives for this product can be found below, along with publications, customer reviews and Q&amp;As</p>

### Properties

---

<b>Form</b>	Liquid
<b>Storage instructions</b>	Shipped at 4°C. Store at +4°C short term (1-2 weeks). Store at -20°C long term.
<b>Storage buffer</b>	Preservative: 0.05% Sodium azide Constituent: PBS
<b>Purity</b>	Protein G purified
<b>Purification notes</b>	Purified from tissue culture supernatant.
<b>Clonality</b>	Monoclonal
<b>Clone number</b>	7B3
<b>Isotype</b>	IgG1

## Applications

**The Abpromise guarantee** Our **Abpromise guarantee** covers the use of ab104838 in the following tested applications.

The application notes include recommended starting dilutions; optimal dilutions/concentrations should be determined by the end user.

Application	Abreviews	Notes
WB		1/500 - 1/2000. Predicted molecular weight: 192 kDa.
IHC-P		1/200 - 1/1000.
Flow Cyt		Use at an assay dependent concentration. <b>ab170190</b> - Mouse monoclonal IgG1, is suitable for use as an isotype control with this antibody.
ICC/IF		1/200 - 1/1000.

## Target

### Function

Subunit of mTORC2, which regulates cell growth and survival in response to hormonal signals. mTORC2 is activated by growth factors, but, in contrast to mTORC1, seems to be nutrient-insensitive. mTORC2 seems to function upstream of Rho GTPases to regulate the actin cytoskeleton, probably by activating one or more Rho-type guanine nucleotide exchange factors. mTORC2 promotes the serum-induced formation of stress-fibers or F-actin. mTORC2 plays a critical role in AKT1 'Ser-473' phosphorylation, which may facilitate the phosphorylation of the activation loop of AKT1 on 'Thr-308' by PDK1 which is a prerequisite for full activation. mTORC2 regulates the phosphorylation of SGK1 at 'Ser-422'. mTORC2 also modulates the phosphorylation of PRKCA on 'Ser-657'. Plays an essential role in embryonic growth and development.

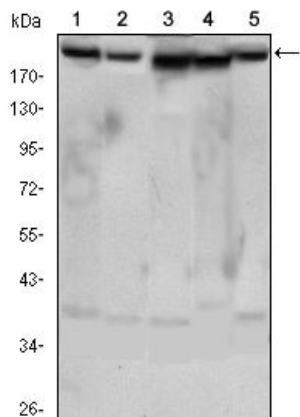
### Sequence similarities

Belongs to the RICTOR family.

### Post-translational modifications

Phosphorylated by MTOR; when part of mTORC2. Phosphorylated at Thr-1135 by RPS6KB1; phosphorylation of RICTOR inhibits mTORC2 and AKT1 signaling.

## Images



Western blot - Anti-RICTOR antibody [7B3] (ab104838)

**All lanes** : Anti-RICTOR antibody [7B3] (ab104838) at 1/500 dilution

**Lane 1** : HeLa cell lysate.

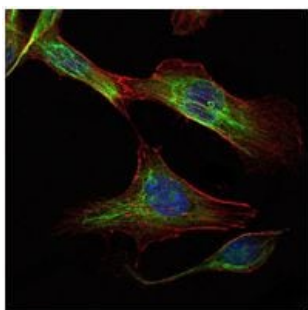
**Lane 2** : PANC-1 cell lysate.

**Lane 3** : MOLT4 cell lysate.

**Lane 4** : HepG2 cell lysate.

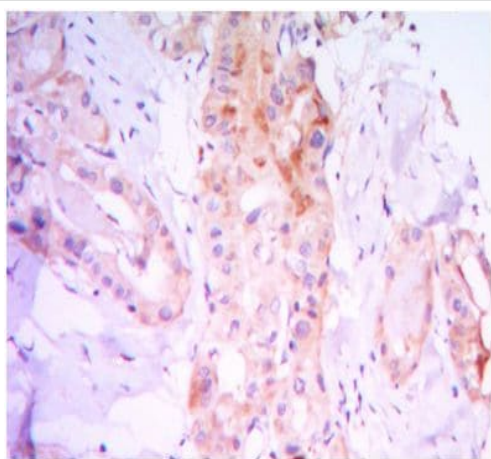
**Lane 5** : HEK293 cell lysate.

**Predicted band size:** 192 kDa



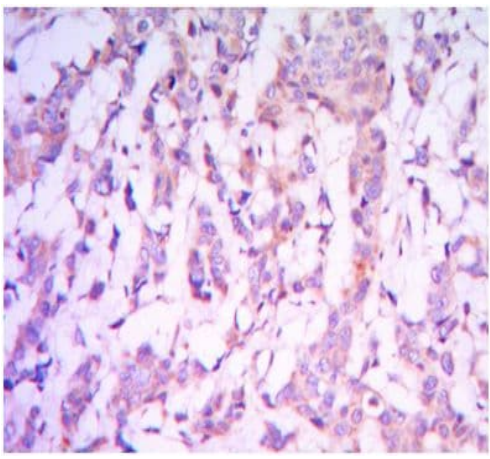
Immunocytochemistry/ Immunofluorescence - Anti-RICTOR antibody [7B3] (ab104838)

ab104838 at 1/200 dilution staining RICTOR in NIH3T3 cells (green) by immunofluorescence. DRAQ5 fluorescent DNA dye is shown in blue. Actin filaments have been labeled with Alexa Fluor-555 phalloidin (red).



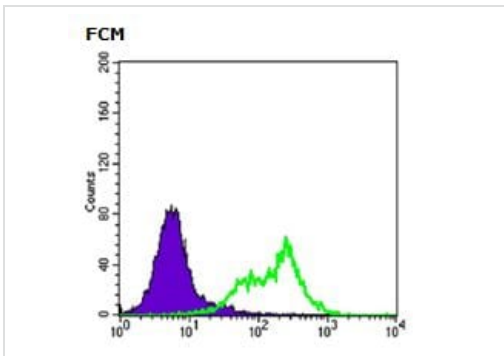
Immunohistochemistry (Formalin/PFA-fixed paraffin-embedded sections) - Anti-RICTOR antibody [7B3] (ab104838)

ab104838 at 1/200 dilution staining RICTOR in paraffin-embedded thyroid gland tissues by Immunohistochemistry (Formalin/PFA-fixed paraffin-embedded sections).



Immunohistochemistry (Formalin/PFA-fixed paraffin-embedded sections) - Anti-RICTOR antibody [7B3] (ab104838)

ab104838 at 1/200 dilution staining RICTOR in paraffin-fixed Human breast carcinoma by Immunohistochemistry (Formalin/PFA-fixed paraffin-embedded sections).



Flow Cytometry - Anti-RICTOR antibody [7B3] (ab104838)

ab104838 used for Flow cytometric analysis of HeLa cells (green). The negative control is shown in purple.

**Please note:** All products are "FOR RESEARCH USE ONLY. NOT FOR USE IN DIAGNOSTIC PROCEDURES"

### Our Abpromise to you: Quality guaranteed and expert technical support

- Replacement or refund for products not performing as stated on the datasheet
- Valid for 12 months from date of delivery
- Response to your inquiry within 24 hours
- We provide support in Chinese, English, French, German, Japanese and Spanish
- Extensive multi-media technical resources to help you
- We investigate all quality concerns to ensure our products perform to the highest standards

If the product does not perform as described on this datasheet, we will offer a refund or replacement. For full details of the Abpromise, please visit <https://www.abcam.com/abpromise> or contact our technical team.

## Terms and conditions

---

- Guarantee only valid for products bought direct from Abcam or one of our authorized distributors