


Product datasheet

Anti-RING2 / RING1B / RNF2 antibody ab101273

★★★★★ [1 Abreviews](#) [18 References](#) [3 Images](#)

Overview

| | |
|----------------------------|---|
| Product name | Anti-RING2 / RING1B / RNF2 antibody |
| Description | Rabbit polyclonal to RING2 / RING1B / RNF2 |
| Host species | Rabbit |
| Tested applications | Suitable for: WB, IP, ICC/IF, IHC-P, ChIP-sequencing |
| Species reactivity | Reacts with: Mouse, Human Predicted to work with: Rat, Rabbit, Horse, Chicken, Cow, Dog, Turkey, Pig, Xenopus laevis, Chimpanzee, Rhesus monkey, Gorilla, Orangutan, Xenopus tropicalis, Platypus  |
| Immunogen | Synthetic peptide corresponding to Human RING2/ RING1B/ RNF2 aa 150-250. Database link: Q99496 |
| General notes | <p>The Life Science industry has been in the grips of a reproducibility crisis for a number of years. Abcam is leading the way in addressing this with our range of recombinant monoclonal antibodies and knockout edited cell lines for gold-standard validation. Please check that this product meets your needs before purchasing.</p> <p>If you have any questions, special requirements or concerns, please send us an inquiry and/or contact our Support team ahead of purchase. Recommended alternatives for this product can be found below, along with publications, customer reviews and Q&As</p> |

Properties

| | |
|-----------------------------|---|
| Form | Liquid |
| Storage instructions | Shipped at 4°C. Store at +4°C short term (1-2 weeks). Upon delivery aliquot. Store at -20°C. Avoid freeze / thaw cycle. |
| Storage buffer | pH: 7 Preservative: 0.09% Sodium azide Constituent: Tris citrate/phosphate |
| Purity | Immunogen affinity purified |
| Clonality | Polyclonal |
| Isotype | IgG |

Applications

The Abpromise guarantee

Our **Abpromise guarantee** covers the use of ab101273 in the following tested applications.

The application notes include recommended starting dilutions; optimal dilutions/concentrations should be determined by the end user.

| Application | Abreviews | Notes |
|-----------------|-----------|--|
| WB | | 1/2000 - 1/10000. Predicted molecular weight: 37 kDa. |
| IP | | Use at 2-5 µg/mg of lysate. |
| ICC/IF | ★★★★★ (1) | Use at an assay dependent concentration. Use with methanol or paraformaldehyde fixed cells. |
| IHC-P | | 1/500 - 1/2000. Perform heat mediated antigen retrieval with citrate buffer pH 6 before commencing with IHC staining protocol. |
| ChIP-sequencing | | Use at an assay dependent concentration. 10 µg |

Target

Function

E3 ubiquitin-protein ligase that mediates monoubiquitination of 'Lys-119' of histone H2A, thereby playing a central role in histone code and gene regulation. H2A 'Lys-119' ubiquitination gives a specific tag for epigenetic transcriptional repression and participates in X chromosome inactivation of female mammals. May be involved in the initiation of both imprinted and random X inactivation. Essential component of the Polycomb group (PcG) multiprotein PRC1 complex, a complex required to maintain the transcriptionally repressive state of many genes, including Hox genes, throughout development. PcG PRC1 complex act via chromatin remodeling and modification of histones, rendering chromatin heritably changed in its expressibility. E3 ubiquitin-protein ligase activity is enhanced by BMI1/PCGF4. Acts as the main E3 ubiquitin ligase on histone H2A of the PRC1 complex, while RING1 may rather act as a modulator of RNF2/RING2 activity.

Pathway

Protein modification; protein ubiquitination.

Sequence similarities

Contains 1 RING-type zinc finger.

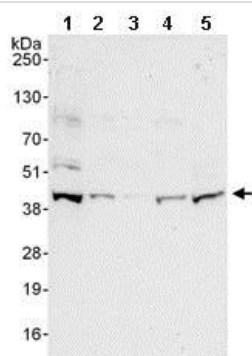
Post-translational modifications

Polyubiquitinated in the presence of UBE2D3 (in vitro).
Monoubiquitinated, by auto-ubiquitination.

Cellular localization

Nucleus. Chromosome. Enriched on inactive X chromosome (Xi) in female trophoblast stem (TS) cells as well as differentiating embryonic stem (ES) cells. The enrichment on Xi is transient during TS and ES cell differentiation. The association with Xi is mitotically stable in non-differentiated TS cells.

Images



Western blot - Anti-RING2 / RING1B / RNF2 antibody (ab101273)

All lanes : Anti-RING2 / RING1B / RNF2 antibody (ab101273) at 0.1 µg/ml

Lane 1 : K562 whole cell lysate at 50 µg

Lane 2 : K562 whole cell lysate at 15 µg

Lane 3 : K562 whole cell lysate at 5 µg

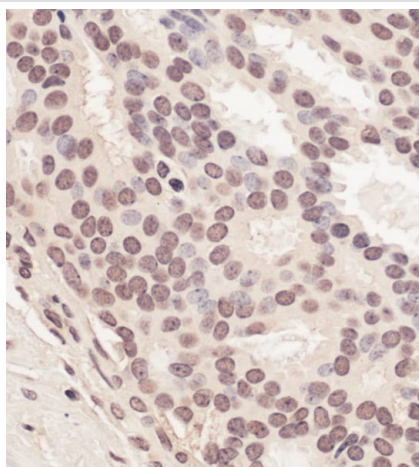
Lane 4 : 293T whole cell lysate at 50 µg

Lane 5 : NIH3T3 whole cell lysate at 50 µg

Developed using the ECL technique.

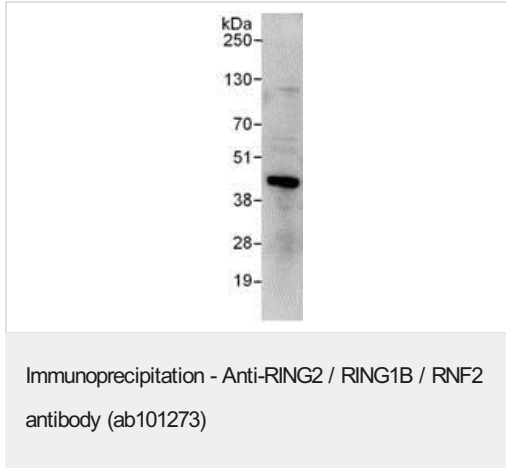
Predicted band size: 37 kDa

Exposure time: 30 seconds



Immunohistochemistry (Formalin/PFA-fixed paraffin-embedded sections) - Anti-RING2 / RING1B / RNF2 antibody (ab101273)

Immunohistochemistry (Formalin/PFA-fixed paraffin-embedded sections) analysis of human prostate carcinoma tissue labelling RING2 / RING1B / RNF2 with ab101273 at 1/1000 (1µg/ml).



Detection of RING2 / RING1B / RNF2 in Immunoprecipitates of K562 whole cell lysate (1 mg for IP, 20% of IP loaded) using ab101273 at 3 µg/mg lysate for IP and at 1 µg/ml for subsequent Western blot detection. Detection: Chemiluminescence with an exposure time of 30 seconds.

Please note: All products are "FOR RESEARCH USE ONLY. NOT FOR USE IN DIAGNOSTIC PROCEDURES"

Our Abpromise to you: Quality guaranteed and expert technical support

- Replacement or refund for products not performing as stated on the datasheet
- Valid for 12 months from date of delivery
- Response to your inquiry within 24 hours
- We provide support in Chinese, English, French, German, Japanese and Spanish
- Extensive multi-media technical resources to help you
- We investigate all quality concerns to ensure our products perform to the highest standards

If the product does not perform as described on this datasheet, we will offer a refund or replacement. For full details of the Abpromise, please visit <https://www.abcam.com/abpromise> or contact our technical team.

Terms and conditions

- Guarantee only valid for products bought direct from Abcam or one of our authorized distributors