

Product datasheet

Anti-RIP3 (phospho S232) antibody [EPR9516(N)-25] ab195117

Recombinant RabMAb

★★★★★ **13 Abreviews** **58 References** [5 Images](#)

Overview

Product name	Anti-RIP3 (phospho S232) antibody [EPR9516(N)-25]
Description	Rabbit monoclonal [EPR9516(N)-25] to RIP3 (phospho S232)
Host species	Rabbit
Tested applications	Suitable for: ELISA, WB, Dot blot Unsuitable for: IHC-P or IP
Species reactivity	Reacts with: Mouse
Immunogen	Synthetic peptide. This information is proprietary to Abcam and/or its suppliers.
Positive control	WB: L-929 whole cell lysate treated with 20 ng/ml TNF alpha, 100 nM Smac mimetic, and 20 µM z-VAD for 8 h and then harvested; Untreated L-929 whole cell lysate; TSE (WT) whole cell lysate treated with 20 ng/ml TNF alpha, 100 nM Smac mimetic, and 20 µM z-VAD for 12 h and then harvested; TSE (KO MLKL) whole cell lysate treated with 20 ng/ml TNF alpha, 100 nM Smac mimetic, and 20 µM z-VAD for 12 h and then harvested.
General notes	<p>This product is a recombinant monoclonal antibody, which offers several advantages including:</p> <ul style="list-style-type: none"> - High batch-to-batch consistency and reproducibility - Improved sensitivity and specificity - Long-term security of supply - Animal-free production <p>For more information see here.</p> <p>Our RabMAb[®] technology is a patented hybridoma-based technology for making rabbit monoclonal antibodies. For details on our patents, please refer to RabMAb[®] patents.</p>

Properties

Form	Liquid
Storage instructions	Shipped at 4°C. Store at +4°C short term (1-2 weeks). Upon delivery aliquot. Store at -20°C long term. Avoid freeze / thaw cycle.
Storage buffer	<p>pH: 7.2</p> <p>Preservative: 0.01% Sodium azide</p> <p>Constituents: 59% PBS, 40% Glycerol, 0.05% BSA</p>

Purity	Protein A purified
Clonality	Monoclonal
Clone number	EPR9516(N)-25
Isotype	IgG

Applications

The Abpromise guarantee Our **Abpromise guarantee** covers the use of ab195117 in the following tested applications.

The application notes include recommended starting dilutions; optimal dilutions/concentrations should be determined by the end user.

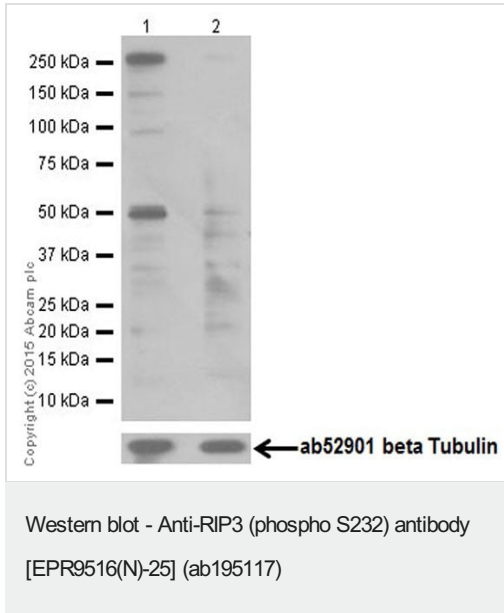
Application	Abreviews	Notes
ELISA	★★★★★ (1)	Use at an assay dependent concentration.
WB	★★★★★ (8)	1/1000. Detects a band of approximately 53 kDa (predicted molecular weight: 53 kDa).
Dot blot		Use at an assay dependent concentration.

Application notes Is unsuitable for IHC-P or IP.

Target

Function	Promotes apoptosis.
Tissue specificity	Detected at lower levels in heart, placenta, lung and kidney. Isoform 3 is significantly increased in colon and lung cancers.
Sequence similarities	Belongs to the protein kinase superfamily. TKL Ser/Thr protein kinase family. Contains 1 protein kinase domain.
Post-translational modifications	Autophosphorylated.
Cellular localization	Cytoplasm.

Images



All lanes : Anti-RIP3 (phospho S232) antibody [EPR9516(N)-25] (ab195117) at 1/10000 dilution

Lane 1 : Untreated L-929 (Mouse connective tissue fibroblast cell line) whole cell lysate

Lane 2 : L-929 (Mouse connective tissue fibroblast cell line) whole cell lysate treated with phosphatase

Lysates/proteins at 10 µg per lane.

Secondary

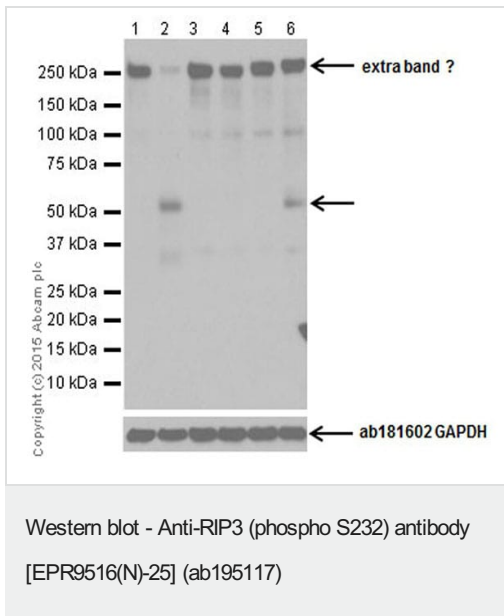
All lanes : Goat Anti-Rabbit IgG H&L (HRP) ([ab97051](#)) at 1/100000 dilution

Predicted band size: 53 kDa

Observed band size: 53 kDa

Exposure time: 3 minutes

Blocking/Dilution buffer: 5% NFDM/TBST.



All lanes : Anti-RIP3 (phospho S232) antibody [EPR9516(N)-25] (ab195117) at 1/2000 dilution

Lane 1 : Untreated TSE (WT) whole cell lysate

Lane 2 : TSE (WT) whole cell lysate treated with 20 ng/ml TNF alpha, 100 nM Smac mimetic, and 20 µM z-VAD for 12 h and then harvested

Lane 3 : Untreated TSE (KO RIP3) whole cell lysate

Lane 4 : TSE (KO RIP3) whole cell lysate treated with 20 ng/ml TNF alpha, 100 nM Smac mimetic, and 20 µM z-VAD for 12 h and then harvested

Lane 5 : Untreated TSE (KO MLKL) whole cell lysate

Lane 6 : TSE (KO MLKL) whole cell lysate treated with 20 ng/ml TNF alpha, 100 nM Smac mimetic, and 20 µM z-VAD for 12 h and then harvested

Lysates/proteins at 10 µg per lane.

Secondary

All lanes : Goat Anti-Rabbit IgG H&L (HRP) ([ab97051](#)) at 1/1000 dilution

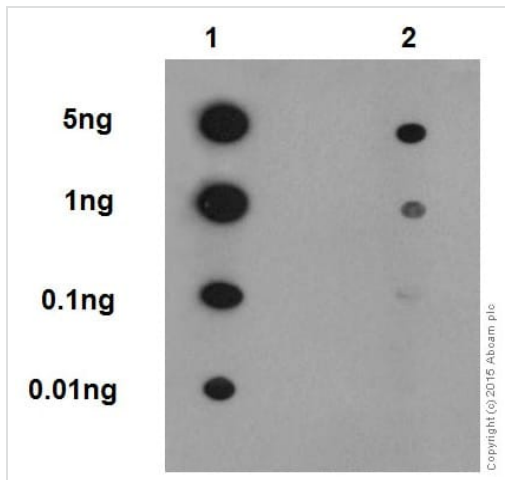
Predicted band size: 53 kDa

Observed band size: 53 kDa

Exposure time: 30 seconds

Blocking/Dilution buffer: 5% NFDM/TBST.

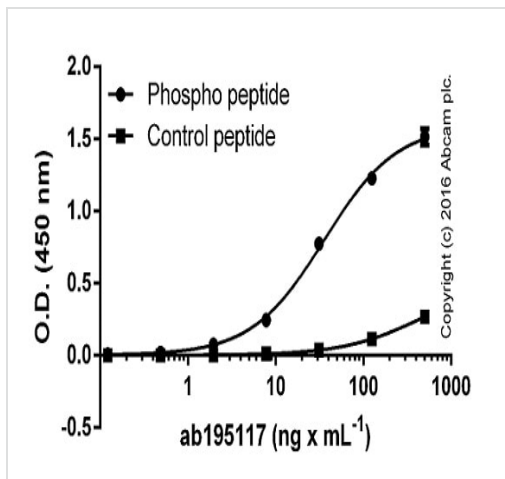
Lysates were provided by Xiaodong Wang, National Institute of Biological Sciences, Beijing



Dot Blot - Anti-RIP3 (phospho S232) antibody
[EPR9516(N)-25] (ab195117)

Primary antibody: ab195117 at 1:1000 dilution (1.6µg/ml), secondary antibody: Goat Anti-Rabbit IgG, (H+L), Peroxidase conjugated (**ab97051**) at 1:1000 dilution, Blocking and dilution buffer: 5% NFDM/TBST, Lane 1: RIP3 (phospho S232) phospho peptide, Lane 2: RIP3 Non-phospho peptide, Exposure time: 3 minutes.

We observed weak binding to the non-phospho peptide at very high concentrations.



ELISA - Anti-RIP3 (phospho S232) antibody
[EPR9516(N)-25] (ab195117)

Serially diluted ab195117 was bound to immobilized phospho or non-phospho (control) peptide demonstrating minimal cross-reactivity to the non-phosphorylated residue. Antigen - RIP3 (phospho S232) phospho peptide; RIP3 non-phospho peptide at 250 ng/ml. Primary antibody concentration range: 0 - 500 ng/ml. Secondary antibody - Alkaline Phosphatase-conjugated AffiniPure Goat Anti-Rabbit IgG(H+L) at 1:2500.

Why choose a recombinant antibody?



Research with confidence
Consistent and reproducible results



Long-term and scalable supply
Recombinant technology



Success from the first experiment
Confirmed specificity



Ethical standards compliant
Animal-free production

Anti-RIP3 (phospho S232) antibody [EPR9516(N)-25] (ab195117)

Please note: All products are "FOR RESEARCH USE ONLY. NOT FOR USE IN DIAGNOSTIC PROCEDURES"

Our Abpromise to you: Quality guaranteed and expert technical support

- Replacement or refund for products not performing as stated on the datasheet
- Valid for 12 months from date of delivery
- Response to your inquiry within 24 hours
- We provide support in Chinese, English, French, German, Japanese and Spanish
- Extensive multi-media technical resources to help you
- We investigate all quality concerns to ensure our products perform to the highest standards

If the product does not perform as described on this datasheet, we will offer a refund or replacement. For full details of the Abpromise, please visit <https://www.abcam.com/abpromise> or contact our technical team.

Terms and conditions

- Guarantee only valid for products bought direct from Abcam or one of our authorized distributors