

Product datasheet

Anti-RIP3 (phospho T231 + S232) antibody [EPR19403-52] ab222320

KO VALIDATED

Recombinant

RabMAb[®]

[16 References](#) [4 Images](#)

Overview

| | |
|----------------------------|--|
| Product name | Anti-RIP3 (phospho T231 + S232) antibody [EPR19403-52] |
| Description | Rabbit monoclonal [EPR19403-52] to RIP3 (phospho T231 + S232) |
| Host species | Rabbit |
| Tested applications | Suitable for: WB, Dot blot |
| Species reactivity | Reacts with: Mouse |
| Immunogen | Synthetic peptide. This information is proprietary to Abcam and/or its suppliers. |
| Positive control | WB: L-929 treated with 20 ng/ml TNF- α , 100 nM Smac mimetic and 20 μ M z-VAD for 6 hr, whole cell lysate. |
| General notes | <p>This product is a recombinant monoclonal antibody, which offers several advantages including:</p> <ul style="list-style-type: none">- High batch-to-batch consistency and reproducibility- Improved sensitivity and specificity- Long-term security of supply- Animal-free production <p>For more information see here.</p> <p>Our RabMAb[®] technology is a patented hybridoma-based technology for making rabbit monoclonal antibodies. For details on our patents, please refer to RabMAb[®] patents.</p> |

Properties

| | |
|-----------------------------|---|
| Form | Liquid |
| Storage instructions | Shipped at 4°C. Store at +4°C short term (1-2 weeks). Upon delivery aliquot. Store at -20°C long term. Avoid freeze / thaw cycle. |
| Storage buffer | pH: 7.2 Preservative: 0.01% Sodium azide Constituents: 0.05% BSA, 40% Glycerol, PBS |
| Purity | Protein A purified |
| Clonality | Monoclonal |
| Clone number | EPR19403-52 |

Isotype

IgG

Applications

The Abpromise guarantee

Our **Abpromise guarantee** covers the use of ab222320 in the following tested applications.

The application notes include recommended starting dilutions; optimal dilutions/concentrations should be determined by the end user.

| Application | Abreviews | Notes |
|-------------|-----------|--|
| WB | | 1/1000. Detects a band of approximately 53 kDa (predicted molecular weight: 57 kDa). |
| Dot blot | | 1/1000. |

Target

Function

Promotes apoptosis.

Tissue specificity

Detected at lower levels in heart, placenta, lung and kidney. Isoform 3 is significantly increased in colon and lung cancers.

Sequence similarities

Belongs to the protein kinase superfamily. TKL Ser/Thr protein kinase family. Contains 1 protein kinase domain.

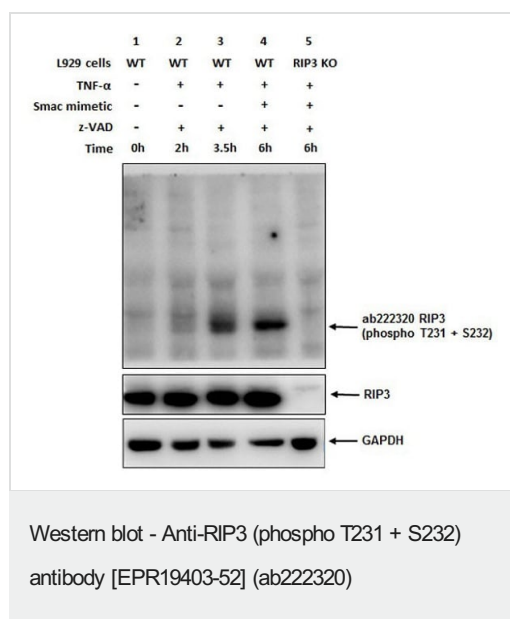
Post-translational modifications

Autophosphorylated.

Cellular localization

Cytoplasm.

Images



All lanes : Anti-RIP3 (phospho T231 + S232) antibody [EPR19403-52] (ab222320) at 1/500 dilution

Lane 1 : Untreated L-929 (mouse connective tissue fibroblast cell line) whole cell lysate

Lane 2 : L-929 (mouse connective tissue fibroblast cell line) whole cell lysate treated with 10 ng/ml TNF- α and 20 μ M z-VAD for 2 hours

Lane 3 : L-929 (mouse connective tissue fibroblast cell line) whole cell lysate treated with 10 ng/ml TNF- α and 20 μ M z-VAD for 3.5 hours

Lane 4 : L-929 (mouse connective tissue fibroblast cell line) whole cell lysate treated with 20 ng/ml TNF- α , 100 nM Smac mimetic and 20 μ M z-VAD for 6 hours

Lane 5 : L-929 (mouse connective tissue fibroblast cell line) whole cell lysate with RIP3 KO cells treated with 20 ng/ml TNF- α , 100 nM Smac mimetic and 20 μ M z-VAD for 6 hours

Lysates/proteins at 20 µg per lane.

Secondary

All lanes : Goat Anti-Rabbit IgG H&L (HRP) (**ab97051**) at 1/5000 dilution

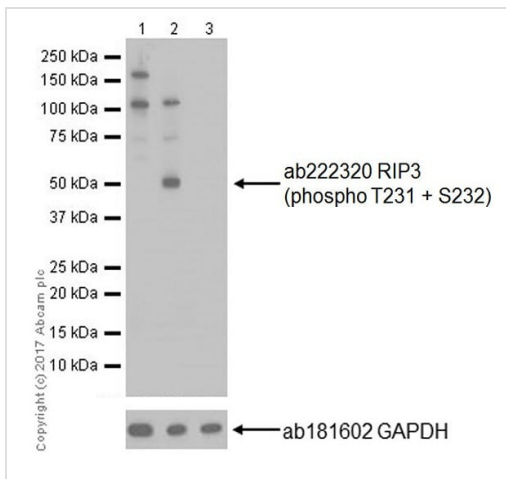
Predicted band size: 57 kDa

Exposure time: 60 seconds

Blocking/Dilution buffer: 5% NFDm/TBST.

Cells were lysed in 4% SDS buffer (4% SDS, 10% 2-ME, 20% glycerol, 0.004% Bromophenol blue, Tris-HCl).

The images were kindly provided by our collaborator Dr. Jiahuai Han, Xiamen University.



Western blot - Anti-RIP3 (phospho T231 + S232) antibody [EPR19403-52] (ab222320)

All lanes : Anti-RIP3 (phospho T231 + S232) antibody [EPR19403-52] (ab222320) at 1/1000 dilution

Lane 1 : Untreated L-929 (mouse connective tissue fibroblast cell line) whole cell lysate

Lane 2 : L-929 (mouse connective tissue fibroblast cell line) whole cell lysate treated with 20 ng/ml TNF- α , 100 nM Smac mimetic and 20 μ M z-VAD for 6 hours

Lane 3 : L-929 (mouse connective tissue fibroblast cell line) whole cell lysate treated with 20 ng/ml TNF- α , 100 nM Smac mimetic and 20 μ M z-VAD for 6 hours, then treated with alkaline phosphatase for 1 hour

Lysates/proteins at 10 µg per lane.

Secondary

All lanes : Goat Anti-Rabbit IgG H&L (HRP) (**ab97051**) at 1/20000 dilution

Predicted band size: 57 kDa

Observed band size: 53 kDa

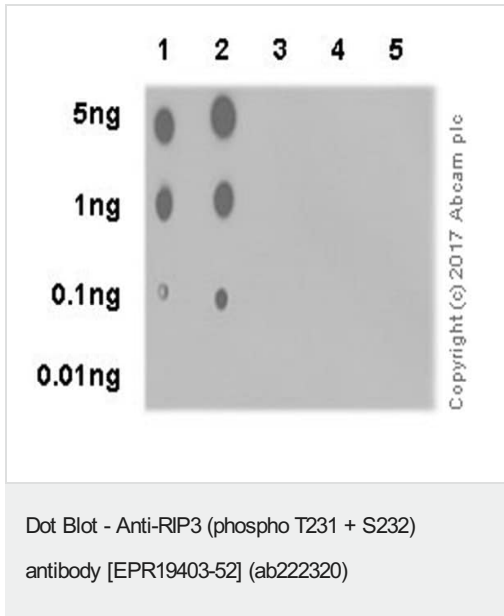
Exposure time: 30 seconds

Blocking/Dilution buffer: 5% NFD/MTBST.

The higher MW bands in Lanes 1 and 2 are extra bands.

The lysates were prepared following the 1% SDS Hot Lysate buffer method.

For Lysate preparation protocol, please refer to the protocol book in the protocol section and/or [here \(downloadable copy\)](#).



Dot blot analysis of RIP3 (phospho T231 + S232) labeled with ab222320 at 1/1000 dilution.

Lane 1: RIP3 (phospho T231 + S232) peptide (aa229-239);

Lane 2: RIP3 (phospho T231 + S232) peptide (aa223-236);

Lane 3: RIP3 (phospho T231) peptide (aa223-239);

Lane 4: RIP3 (phospho S232) peptide (aa223-239);

Lane 5: RIP3 non-phospho peptide (aa223-239).

Goat Anti-Rabbit IgG H&L (HRP) ([ab97051](#)) at 1/100000 dilution was used as secondary antibody.

Blocking/Dilution buffer: 5% NFD/MTBST.

Exposure time: 3 minutes.

Why choose a recombinant antibody?

- Research with confidence**
Consistent and reproducible results
- Long-term and scalable supply**
Recombinant technology
- Success from the first experiment**
Confirmed specificity
- Ethical standards compliant**
Animal-free production

Anti-RIP3 (phospho T231 + S232) antibody [EPR19403-52] (ab222320)

Please note: All products are "FOR RESEARCH USE ONLY. NOT FOR USE IN DIAGNOSTIC PROCEDURES"

Our Abpromise to you: Quality guaranteed and expert technical support

-
- Replacement or refund for products not performing as stated on the datasheet
 - Valid for 12 months from date of delivery
 - Response to your inquiry within 24 hours

 - We provide support in Chinese, English, French, German, Japanese and Spanish
 - Extensive multi-media technical resources to help you
 - We investigate all quality concerns to ensure our products perform to the highest standards

If the product does not perform as described on this datasheet, we will offer a refund or replacement. For full details of the Abpromise, please visit <https://www.abcam.com/abpromise> or contact our technical team.

Terms and conditions

- Guarantee only valid for products bought direct from Abcam or one of our authorized distributors