


Product datasheet

Anti-RLF antibody ab115154

[2 Images](#)

Overview

| | |
|----------------------------|---|
| Product name | Anti-RLF antibody |
| Description | Rabbit polyclonal to RLF |
| Host species | Rabbit |
| Tested applications | Suitable for: WB, IP |
| Species reactivity | Reacts with: Human Predicted to work with: Mouse, Rat, Rabbit, Guinea pig, Cow, Dog, Pig, Chimpanzee, Rhesus monkey, Gorilla, Orangutan  |
| Immunogen | Synthetic peptide, corresponding to a region within amino acids 500-550 of Human RLF (Q13129). |
| Positive control | HeLa and 293T cell lysates. |
| General notes | <p>The Life Science industry has been in the grips of a reproducibility crisis for a number of years. Abcam is leading the way in addressing this with our range of recombinant monoclonal antibodies and knockout edited cell lines for gold-standard validation. Please check that this product meets your needs before purchasing.</p> <p>If you have any questions, special requirements or concerns, please send us an inquiry and/or contact our Support team ahead of purchase. Recommended alternatives for this product can be found below, along with publications, customer reviews and Q&As</p> |

Properties

| | |
|-----------------------------|---|
| Form | Liquid |
| Storage instructions | Shipped at 4°C. Upon delivery aliquot and store at -20°C. Avoid freeze / thaw cycles. |
| Storage buffer | pH: 7 Preservative: 0.09% Sodium azide Constituent: 99% Tris citrate/phosphate |
| Purity | pH 7 to 8 Immunogen affinity purified |
| Clonality | Polyclonal |
| Isotype | IgG |

Applications

The Abpromise guarantee

Our **Abpromise guarantee** covers the use of ab115154 in the following tested applications.

The application notes include recommended starting dilutions; optimal dilutions/concentrations should be determined by the end user.

| Application | Abreviews | Notes |
|-------------|-----------|--|
| WB | | 1/2000 - 1/10000. Predicted molecular weight: 218 kDa. |
| IP | | Use at 2-10 µg/mg of lysate. |

Target

Function

May be involved in transcriptional regulation.

Tissue specificity

Widely expressed in fetal and adult tissues.

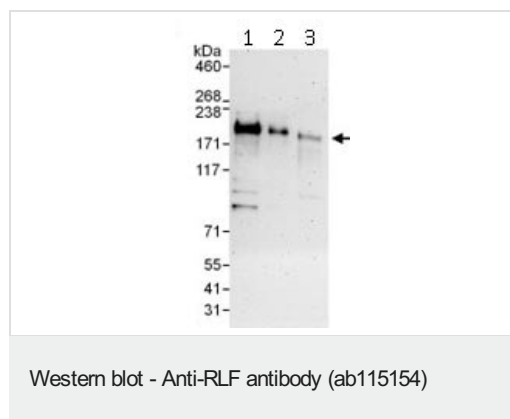
Sequence similarities

Belongs to the krueppel C2H2-type zinc-finger protein family.
Contains 14 C2H2-type zinc fingers.

Cellular localization

Nucleus.

Images



All lanes : Anti-RLF antibody (ab115154) at 0.1 µg/ml

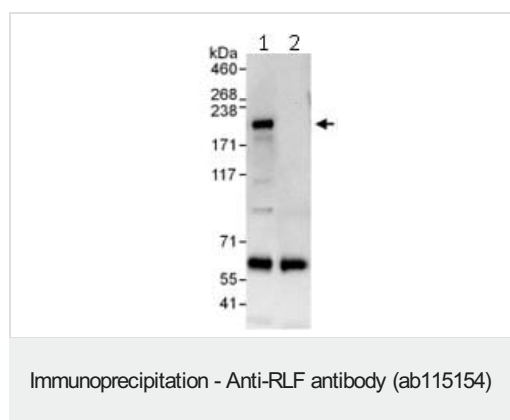
Lane 1 : HeLa cell lysate at 50 µg

Lane 2 : HeLa cell lysate at 15 µg

Lane 3 : 293T cell lysate at 50 µg

Predicted band size: 218 kDa

Exposure time: 3 minutes



Immunoprecipitation of RLF (6 µg of antibody per mg of HeLa cell lysate; 20% of the IP loaded). Lane 1- Immunoprecipitation with an anti-RLF antibody (ab115154); Lane 2- Immunoprecipitation with IgG control. Anti-RLF antibody (ab115154) used at 1 µg/ml for western blot. Detection: Chemiluminescence with exposure time of 10 sec.

Please note: All products are "FOR RESEARCH USE ONLY. NOT FOR USE IN DIAGNOSTIC PROCEDURES"

Our Abpromise to you: Quality guaranteed and expert technical support

- Replacement or refund for products not performing as stated on the datasheet
- Valid for 12 months from date of delivery
- Response to your inquiry within 24 hours

- We provide support in Chinese, English, French, German, Japanese and Spanish
- Extensive multi-media technical resources to help you
- We investigate all quality concerns to ensure our products perform to the highest standards

If the product does not perform as described on this datasheet, we will offer a refund or replacement. For full details of the Abpromise, please visit <https://www.abcam.com/abpromise> or contact our technical team.

Terms and conditions

- Guarantee only valid for products bought direct from Abcam or one of our authorized distributors