

## Product datasheet

# Anti-RLTPR antibody ab122717

★★★★☆ [3 Abreviews](#) [5 References](#) [1 Image](#)

### Overview

---

<b>Product name</b>	Anti-RLTPR antibody
<b>Description</b>	Rabbit polyclonal to RLTPR
<b>Host species</b>	Rabbit
<b>Tested applications</b>	<b>Suitable for:</b> IHC-P
<b>Species reactivity</b>	<b>Reacts with:</b> Human
<b>Immunogen</b>	antigen sequence: EVNELCQSVQ EHVELLGCGA GPQGEAAVRQ AEDAIQNANF SLSILPILYE AGSSPSHHWQ LGQKLEGLLR QVGEVCRQDI QDFTQ, corresponding to amino acids 729-813 of Human RLTPR. <a href="#">Run BLAST with ExPASy</a> <a href="#">Run BLAST with NCBI</a>
<b>Positive control</b>	Human rectum tissue
<b>General notes</b>	

ab122717 is mono-specific.

The Life Science industry has been in the grips of a reproducibility crisis for a number of years. Abcam is leading the way in addressing this with our range of recombinant monoclonal antibodies and knockout edited cell lines for gold-standard validation. Please check that this product meets your needs before purchasing.

If you have any questions, special requirements or concerns, please send us an inquiry and/or contact our Support team ahead of purchase. Recommended alternatives for this product can be found below, along with publications, customer reviews and Q&As

### Properties

---

<b>Form</b>	Liquid
<b>Storage instructions</b>	Shipped at 4°C. Upon delivery aliquot and store at -20°C. Avoid freeze / thaw cycles.
<b>Storage buffer</b>	pH: 7.20 Preservative: 0.02% Sodium azide Constituents: 40% Glycerol (glycerin, glycerine), 59% PBS
<b>Purity</b>	Immunogen affinity purified
<b>Primary antibody notes</b>	ab122717 is mono-specific.
<b>Clonality</b>	Polyclonal

Isotype

IgG

## Applications

### The Abpromise guarantee

Our **Abpromise guarantee** covers the use of ab122717 in the following tested applications.

The application notes include recommended starting dilutions; optimal dilutions/concentrations should be determined by the end user.

Application	Abreviews	Notes
IHC-P		1/50 - 1/200. Perform heat mediated antigen retrieval with citrate buffer pH 6 before commencing with IHC staining protocol.

## Target

### Tissue specificity

Expressed in all tissues tested, including thymus, spleen, colon, leukocytes, peripheral blood, skin, skin keratinocytes and skin fibroblasts.

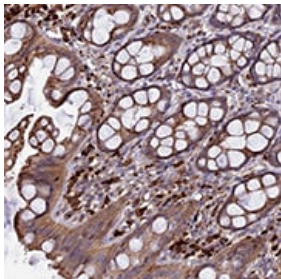
### Sequence similarities

Belongs to the CARMIL family.  
Contains 16 LRR (leucine-rich) repeats.

### Developmental stage

Expressed in fetal skin.

## Images



ab122717, at 1/50 dilution, staining RLTPR in paraffin-embedded Human rectum tissue by Immunohistochemistry.

Immunohistochemistry (Formalin/PFA-fixed paraffin-embedded sections) - Anti-RLTPR antibody (ab122717)

**Please note:** All products are "FOR RESEARCH USE ONLY. NOT FOR USE IN DIAGNOSTIC PROCEDURES"

## Our Abpromise to you: Quality guaranteed and expert technical support

- Replacement or refund for products not performing as stated on the datasheet
- Valid for 12 months from date of delivery
- Response to your inquiry within 24 hours
- We provide support in Chinese, English, French, German, Japanese and Spanish
- Extensive multi-media technical resources to help you

- We investigate all quality concerns to ensure our products perform to the highest standards

If the product does not perform as described on this datasheet, we will offer a refund or replacement. For full details of the Abpromise, please visit <https://www.abcam.com/abpromise> or contact our technical team.

### **Terms and conditions**

---

- Guarantee only valid for products bought direct from Abcam or one of our authorized distributors