




Product datasheet

Anti-RNASE6 antibody ab121111

[2 References](#) [1 Image](#)

Overview

Product name	Anti-RNASE6 antibody
Description	Rabbit polyclonal to RNASE6
Host species	Rabbit
Tested applications	Suitable for: IHC-P
Species reactivity	Reacts with: Human
Immunogen	Recombinant fragment, corresponding to amino acids 25-144 of Human RNASE6 (Q93091).  Run BLAST with  Run BLAST with 
Positive control	Human Liver tissue
General notes	<p>The Life Science industry has been in the grips of a reproducibility crisis for a number of years. Abcam is leading the way in addressing this with our range of recombinant monoclonal antibodies and knockout edited cell lines for gold-standard validation. Please check that this product meets your needs before purchasing.</p> <p>If you have any questions, special requirements or concerns, please send us an inquiry and/or contact our Support team ahead of purchase. Recommended alternatives for this product can be found below, along with publications, customer reviews and Q&As</p>

Properties

Form	Liquid
Storage instructions	Shipped at 4°C. Upon delivery aliquot and store at -20°C. Avoid freeze / thaw cycles.
Storage buffer	pH: 7.20 Preservative: 0.02% Sodium azide Constituents: 59% PBS, 40% Glycerol (glycerin, glycerine)
Purity	Immunogen affinity purified
Clonality	Polyclonal
Isotype	IgG

Applications

The Abpromise guarantee Our **Abpromise guarantee** covers the use of ab121111 in the following tested applications.

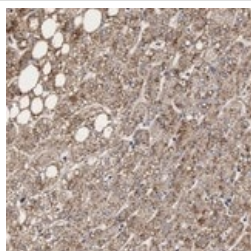
The application notes include recommended starting dilutions; optimal dilutions/concentrations should be determined by the end user.

Application	Abreviews	Notes
IHC-P		1/50 - 1/200. Perform heat mediated antigen retrieval with citrate buffer pH 6 before commencing with IHC staining protocol. Use buffer at pH 6 for antigen retrieval.

Target

Function	May have a role in host defense.
Tissue specificity	Strong expression in lung, followed by heart, placenta, kidney, pancreas, liver, brain and skeletal muscle. Also expressed in monocytes and neutrophils.
Sequence similarities	Belongs to the pancreatic ribonuclease family.
Cellular localization	Secreted.

Images



Immunohistochemical staining of Human liver shows moderate cytoplasmic positivity in hepatocytes, ab121111 used at a dilution of 1/25.

Immunohistochemistry (Formalin/PFA-fixed paraffin-embedded sections) - Anti-RNASE6 antibody (ab121111)

Please note: All products are "FOR RESEARCH USE ONLY. NOT FOR USE IN DIAGNOSTIC PROCEDURES"

Our Abpromise to you: Quality guaranteed and expert technical support

- Replacement or refund for products not performing as stated on the datasheet
- Valid for 12 months from date of delivery
- Response to your inquiry within 24 hours
- We provide support in Chinese, English, French, German, Japanese and Spanish
- Extensive multi-media technical resources to help you
- We investigate all quality concerns to ensure our products perform to the highest standards

If the product does not perform as described on this datasheet, we will offer a refund or replacement. For full details of the Abpromise, please visit <https://www.abcam.com/abpromise> or contact our technical team.

Terms and conditions

- Guarantee only valid for products bought direct from Abcam or one of our authorized distributors