


Anti-RNF20 antibody ab32629

★★★★☆ [19 Abreviews](#) [17 References](#) [5 Images](#)

Overview

Product name	Anti-RNF20 antibody
Description	Rabbit polyclonal to RNF20
Host species	Rabbit
Tested applications	Suitable for: WB, ICC/IF
Species reactivity	Reacts with: Chicken, Human Predicted to work with: Mouse 
Immunogen	Synthetic peptide corresponding to Human RNF20 aa 1-100 conjugated to keyhole limpet haemocyanin. (Peptide available as ab32628)
General notes	<p>The Life Science industry has been in the grips of a reproducibility crisis for a number of years. Abcam is leading the way in addressing this with our range of recombinant monoclonal antibodies and knockout edited cell lines for gold-standard validation. Please check that this product meets your needs before purchasing.</p> <p>If you have any questions, special requirements or concerns, please send us an inquiry and/or contact our Support team ahead of purchase. Recommended alternatives for this product can be found below, along with publications, customer reviews and Q&As</p>

Properties

Form	Liquid
Storage instructions	Shipped at 4°C. Store at +4°C short term (1-2 weeks). Upon delivery aliquot. Store at -20°C or -80°C. Avoid freeze / thaw cycle.
Storage buffer	<p>pH: 7.40</p> <p>Preservative: 0.02% Sodium azide</p> <p>Constituent: PBS</p> <p>Batches of this product that have a concentration < 1mg/ml may have BSA added as a stabilising agent. If you would like information about the formulation of a specific lot, please contact our scientific support team who will be happy to help.</p>
Purity	Immunogen affinity purified
Clonality	Polyclonal

Isotype

IgG

Applications

The Abpromise guarantee

Our **Abpromise guarantee** covers the use of ab32629 in the following tested applications.

The application notes include recommended starting dilutions; optimal dilutions/concentrations should be determined by the end user.

Application	Abreviews	Notes
WB	★★★★★ (8)	Use a concentration of 1 µg/ml. Detects a band of approximately 120 kDa (predicted molecular weight: 114 kDa).
ICC/IF	★★★★★ (6)	Use a concentration of 1 µg/ml.

Target

Function

Component of the RNF20/40 E3 ubiquitin-protein ligase complex that mediates monoubiquitination of 'Lys-120' of histone H2B (H2BK120ub1). H2BK120ub1 gives a specific tag for epigenetic transcriptional activation and is also prerequisite for histone H3 'Lys-4' and 'Lys-79' methylation (H3K4me and H3K79me, respectively). It thereby plays a central role in histone code and gene regulation. The RNF20/40 complex forms a H2B ubiquitin ligase complex in cooperation with the E2 enzyme UBE2A or UBE2B; reports about the cooperation with UBE2E1/UBCH are contradictory. Required for transcriptional activation of Hox genes. Recruited to the MDM2 promoter, probably by being recruited by p53/TP53, and thereby acts as a transcriptional coactivator. Mediates the polyubiquitination of isoform 2 of PA2G4 in cancer cells leading to its proteasome-mediated degradation.

Tissue specificity

Expressed in the normal brain and also in malignant gliomas (at protein level).

Pathway

Protein modification; protein ubiquitination.

Sequence similarities

Belongs to the BRE1 family.
Contains 1 RING-type zinc finger.

Cellular localization

Nucleus.

Images



Western blot - Anti-RNF20 antibody (ab32629)

All lanes : Anti-RNF20 antibody (ab32629) at 1 µg/ml

Lane 1 : HeLa (Human epithelial carcinoma cell line) Whole Cell Lysate

Lane 2 : Jurkat whole cell lysate ([ab7899](#))

Lane 3 : A-431 whole cell lysate ([ab7909](#))

Lane 4 : HEK-293 whole cell lysate ([ab7902](#))

Lane 5 : MCF-7 (Human breast adenocarcinoma cell line) Whole Cell Lysate

Lane 6 : U2OS (Human osteosarcoma cell line) Whole Cell Lysate

Lysates/proteins at 10 µg per lane.

Secondary

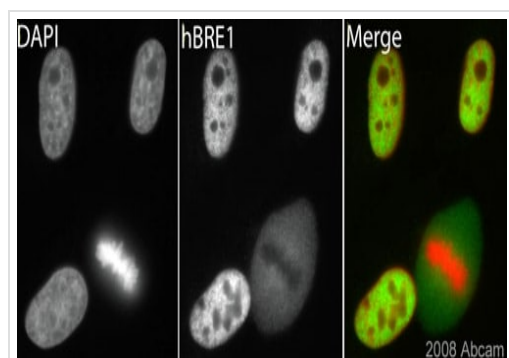
Lane 1 : IRDye 680 Conjugated Goat Anti-Rabbit IgG (H+L) at 1/15000 dilution

Lanes 2-6 : IRDye 680 Conjugated Goat Anti-Rabbit IgG (H+L) at 1/15000 dilution

Performed under reducing conditions.

Predicted band size: 114 kDa

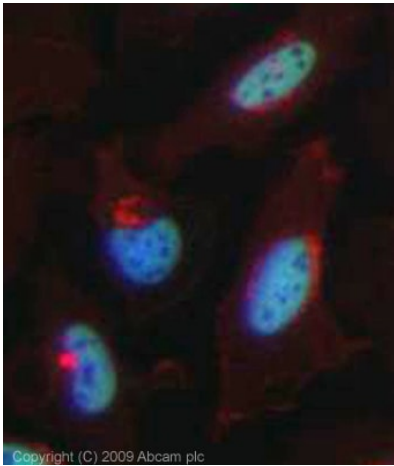
Observed band size: 120 kDa



Immunocytochemistry/ Immunofluorescence - Anti-RNF20 antibody (ab32629)

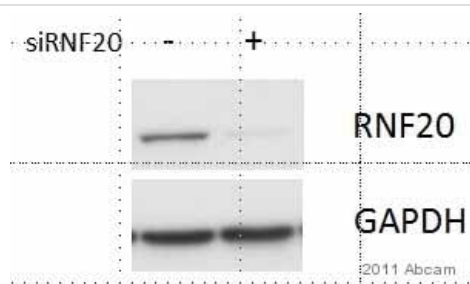
This image is courtesy of an Abreview submitted by Dr Kirk McManus

ab32629 (1/500) staining RNF20 in asynchronous HeLa cells (green). Cells were fixed in paraformaldehyde, permeabilised with 0.5% Triton X100/PBS and counterstained with DAPI to highlight the nucleus (red). Please refer to abreview for further experimental details.



Immunocytochemistry/ Immunofluorescence - Anti-RNF20 antibody (ab32629)

ICC/IF image of ab32629 stained HeLa cells. The cells were 4% PFA fixed (10 min) and then incubated in 1%BSA / 10% normal goat serum / 0.3M glycine in 0.1% PBS-Tween for 1h to permeabilise the cells and block non-specific protein-protein interactions. The cells were then incubated with the antibody (ab32629, 1µg/ml) overnight at +4°C. The secondary antibody (green) was Alexa Fluor® 488 goat anti-rabbit IgG (H+L) used at a 1/1000 dilution for 1h. Alexa Fluor® 594 WGA was used to label plasma membranes (red) at a 1/200 dilution for 1h. DAPI was used to stain the cell nuclei (blue) at a concentration of 1.43µM. This antibody also gave a positive result in 4% PFA fixed (10 min) Hek293, HepG2 and MCF7 cells at 1µg/ml, and in 100% methanol fixed (5 min) HeLa, Hek293, HepG2 and MCF7 cells at 1µg/ml.



Western blot - Anti-RNF20 antibody (ab32629)
Image courtesy of an anonymous Abreview.

All lanes : Anti-RNF20 antibody (ab32629) at 1/1000 dilution

Lane 1 : Whole cell lysate prepared from Ntera2 cells

Lane 2 : Whole cell lysate prepared from Ntera2 cells + siRNA against RNF20 for 48 hours

Lysates/proteins at 20 µg per lane.

Secondary

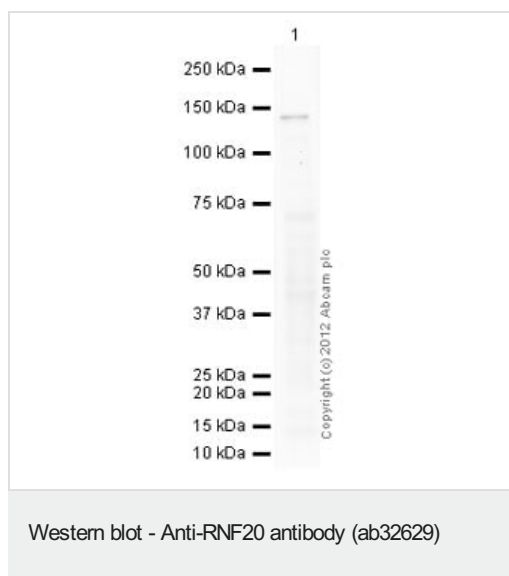
All lanes : HRP conjugated goat polyclonal at 1/10000 dilution

Developed using the ECL technique.

Predicted band size: 114 kDa

Observed band size: 120 kDa

Exposure time: 20 seconds



Anti-RNF20 antibody (ab32629) at 1 µg/ml + Liver (Chicken) Tissue
Lysate at 10 µg

Secondary

Goat Anti-Rabbit IgG H&L (HRP) preadsorbed ([ab97080](#)) at
1/5000 dilution

Developed using the ECL technique.

Performed under reducing conditions.

Predicted band size: 114 kDa

Observed band size: 140 kDa

Exposure time: 20 minutes

Please note: All products are "FOR RESEARCH USE ONLY. NOT FOR USE IN DIAGNOSTIC PROCEDURES"

Our Abpromise to you: Quality guaranteed and expert technical support

- Replacement or refund for products not performing as stated on the datasheet
- Valid for 12 months from date of delivery
- Response to your inquiry within 24 hours
- We provide support in Chinese, English, French, German, Japanese and Spanish
- Extensive multi-media technical resources to help you
- We investigate all quality concerns to ensure our products perform to the highest standards

If the product does not perform as described on this datasheet, we will offer a refund or replacement. For full details of the Abpromise, please visit <https://www.abcam.com/abpromise> or contact our technical team.

Terms and conditions

- Guarantee only valid for products bought direct from Abcam or one of our authorized distributors