


Product datasheet

Anti-RNF216 antibody ab226215

2 Images

Overview

Product name	Anti-RNF216 antibody
Description	Rabbit polyclonal to RNF216
Host species	Rabbit
Tested applications	Suitable for: WB, IP
Species reactivity	Reacts with: Mouse, Human Predicted to work with: Chimpanzee, Rhesus monkey, Orangutan 
Immunogen	Synthetic peptide within Human RNF216 aa 100-150. The exact sequence is proprietary. (NP_996999.1). Database link: Q9NWF9
Positive control	WB: HeLa, HEK-293T, Jurkat and TCMK-1 whole cell lysates. IP: HeLa whole cell lysate (ab150035).
General notes	<p>The Life Science industry has been in the grips of a reproducibility crisis for a number of years. Abcam is leading the way in addressing this with our range of recombinant monoclonal antibodies and knockout edited cell lines for gold-standard validation. Please check that this product meets your needs before purchasing.</p> <p>If you have any questions, special requirements or concerns, please send us an inquiry and/or contact our Support team ahead of purchase. Recommended alternatives for this product can be found below, along with publications, customer reviews and Q&As</p>

Properties

Form	Liquid
Storage instructions	Shipped at 4°C. Store at +4°C short term (1-2 weeks). Upon delivery aliquot. Store at -20°C long term. Avoid freeze / thaw cycle.
Storage buffer	pH: 7 Preservative: 0.09% Sodium azide Constituent: Tris citrate/phosphate pH 7 to 8
Purity	Immunogen affinity purified
Purification notes	ab226215 was affinity purified using an epitope specific to RNF216 immobilized on solid support.

Clonality	Polyclonal
Isotype	IgG

Applications

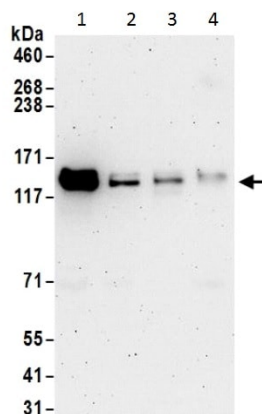
The Abpromise guarantee Our **Abpromise guarantee** covers the use of ab226215 in the following tested applications. The application notes include recommended starting dilutions; optimal dilutions/concentrations should be determined by the end user.

Application	Abreviews	Notes
WB		1/1000 - 1/5000. Predicted molecular weight: 99 kDa.
IP		Use at 2-10 µg/mg of lysate.

Target

Function	Isoform 1 acts as an E3 ubiquitin ligase, which accepts ubiquitin from specific E2 ubiquitin-conjugating enzymes, and then transfers it to substrates promoting their degradation by the proteasome. Promotes degradation of TRAF3, TLR4 and TLR9. Contributes to the regulation of antiviral responses. Down-regulates activation of NF-kappa-B, IRF3 activation and IFNB production. Isoform 3 inhibits TNF and IL-1 mediated activation of NF-kappa-B. Promotes TNF and RIP mediated apoptosis.
Tissue specificity	Ubiquitous, with the highest levels of expression in testis and peripheral blood leukocytes.
Pathway	Protein modification; protein ubiquitination.
Involvement in disease	Gordon Holmes syndrome
Sequence similarities	Contains 1 IBR-type zinc finger. Contains 2 RING-type zinc fingers.
Domain	The RING-type zinc finger domain mediates binding to an E2 ubiquitin-conjugating enzyme.
Post-translational modifications	Auto-ubiquitinated.
Cellular localization	Cytoplasm.

Images



Western blot - Anti-RNF216 antibody (ab226215)

All lanes : Anti-RNF216 antibody (ab226215) at 0.4 µg/ml

Lane 1 : HeLa (human epithelial cell line from cervix adenocarcinoma) whole cell lysate

Lane 2 : HEK-293T (human epithelial cell line from embryonic kidney transformed with large T antigen) whole cell lysate

Lane 3 : Jurkat (human T cell leukemia cell line from peripheral blood) whole cell lysate

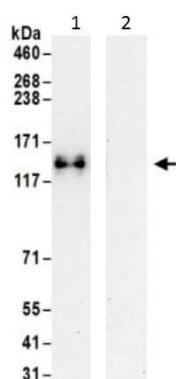
Lane 4 : TCMK-1 (mouse kidney epithelial cell line) whole cell lysate

Lysates/proteins at 50 µg per lane.

Developed using the ECL technique.

Predicted band size: 99 kDa

Exposure time: 3 minutes



Immunoprecipitation - Anti-RNF216 antibody (ab226215)

RNF216 was immunoprecipitated from HeLa (human epithelial cell line from cervix adenocarcinoma) whole cell lysate (1 mg for IP, 20% of IP loaded) with ab226215 at 6 µg/mg lysate. Western blot was performed from the immunoprecipitate using ab226215 at 1 µg/ml.

Lane 1: ab226215 IP in HeLa whole cell lysate.

Lane 2: Control IgG IP in HeLa whole cell lysate.

Detection: Chemiluminescence with exposure time of 30 seconds.

Please note: All products are "FOR RESEARCH USE ONLY. NOT FOR USE IN DIAGNOSTIC PROCEDURES"

Our Abpromise to you: Quality guaranteed and expert technical support

- Replacement or refund for products not performing as stated on the datasheet
- Valid for 12 months from date of delivery
- Response to your inquiry within 24 hours

- We provide support in Chinese, English, French, German, Japanese and Spanish
- Extensive multi-media technical resources to help you
- We investigate all quality concerns to ensure our products perform to the highest standards

If the product does not perform as described on this datasheet, we will offer a refund or replacement. For full details of the Abpromise, please visit <https://www.abcam.com/abpromise> or contact our technical team.

Terms and conditions

- Guarantee only valid for products bought direct from Abcam or one of our authorized distributors