

Anti-Robo1 antibody ab85312

★★★★★ [3 Abreviews](#) [5 References](#) [1 Image](#)

Overview

Product name	Anti-Robo1 antibody
Description	Rabbit polyclonal to Robo1
Host species	Rabbit
Tested applications	Suitable for: WB Unsuitable for: ICC/IF
Species reactivity	Reacts with: Mouse, Human
Immunogen	Synthetic peptide corresponding to Human Robo1 aa 1600 to the C-terminus conjugated to keyhole limpet haemocyanin. (Peptide available as ab94835)
Positive control	WB: Human brain; Mouse brain lysates
General notes	<p>The Life Science industry has been in the grips of a reproducibility crisis for a number of years. Abcam is leading the way in addressing this with our range of recombinant monoclonal antibodies and knockout edited cell lines for gold-standard validation. Please check that this product meets your needs before purchasing.</p> <p>If you have any questions, special requirements or concerns, please send us an inquiry and/or contact our Support team ahead of purchase. Recommended alternatives for this product can be found below, along with publications, customer reviews and Q&As</p>

Properties

Form	Liquid
Storage instructions	Shipped at 4°C. Store at +4°C short term (1-2 weeks). Upon delivery aliquot. Store at -20°C or -80°C. Avoid freeze / thaw cycle.
Storage buffer	pH: 7.40 Preservative: 0.02% Sodium azide Constituent: PBS
Purity	Batches of this product that have a concentration < 1mg/ml may have BSA added as a stabilising agent. If you would like information about the formulation of a specific lot, please contact our scientific support team who will be happy to help. Immunogen affinity purified

Clonality	Polyclonal
Isotype	IgG

Applications

The Abpromise guarantee Our **Abpromise guarantee** covers the use of ab85312 in the following tested applications. The application notes include recommended starting dilutions; optimal dilutions/concentrations should be determined by the end user.

Application	Abreviews	Notes
WB	★★★★★ (2)	Use a concentration of 1 µg/ml. Detects a band of approximately 190 kDa (predicted molecular weight: 180 kDa).

Application notes Is unsuitable for ICC/IF.

Target

Function Receptor for SLIT1 and SLIT2 which are thought to act as molecular guidance cue in cellular migration, including axonal navigation at the ventral midline of the neural tube and projection of axons to different regions during neuronal development. In axon growth cones, the silencing of the attractive effect of NTN1 by SLIT2 may require the formation of a ROBO1-DCC complex. May be required for lung development.

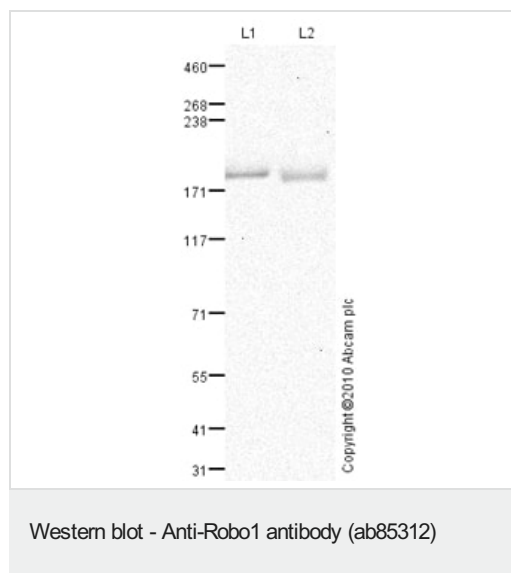
Tissue specificity Widely expressed, with exception of kidney.

Sequence similarities Belongs to the immunoglobulin superfamily. ROBO family.
Contains 3 fibronectin type-III domains.
Contains 5 Ig-like C2-type (immunoglobulin-like) domains.

Post-translational modifications Ubiquitinated. May be deubiquitinated by USP33.

Cellular localization Membrane.

Images



All lanes : Anti-Robo1 antibody (ab85312) at 1 µg/ml

Lane 1 : Human brain tissue lysate - total protein ([ab29466](#))

Lane 2 : Brain (Mouse) Tissue Lysate

Lysates/proteins at 10 µg per lane.

Secondary

All lanes : Goat polyclonal to Rabbit IgG - H&L - Pre-Adsorbed (HRP) at 1/3000 dilution

Developed using the ECL technique.

Performed under reducing conditions.

Predicted band size: 180 kDa

Observed band size: 190 kDa

Exposure time: 20 minutes

Human Roundabout homolog 1 precursor contains a number of potential glycosylation sites (SwissProt) which may explain its migration at a higher molecular weight than predicted.

Please note: All products are "FOR RESEARCH USE ONLY. NOT FOR USE IN DIAGNOSTIC PROCEDURES"

Our Abpromise to you: Quality guaranteed and expert technical support

- Replacement or refund for products not performing as stated on the datasheet
- Valid for 12 months from date of delivery
- Response to your inquiry within 24 hours
- We provide support in Chinese, English, French, German, Japanese and Spanish
- Extensive multi-media technical resources to help you
- We investigate all quality concerns to ensure our products perform to the highest standards

If the product does not perform as described on this datasheet, we will offer a refund or replacement. For full details of the Abpromise, please visit <https://www.abcam.com/abpromise> or contact our technical team.

Terms and conditions

- Guarantee only valid for products bought direct from Abcam or one of our authorized distributors