

Product datasheet

Anti-RON antibody [EP1132Y] ab52927

Recombinant RabMAb

★★★★★ 1 Abreviews 10 References 5 Images

Overview

Product name	Anti-RON antibody [EP1132Y]
Description	Rabbit monoclonal [EP1132Y] to RON
Host species	Rabbit
Tested applications	Suitable for: ELISA, Flow Cyt (Intra), WB, IP, IHC-P
Species reactivity	Reacts with: Human
Immunogen	Synthetic peptide. This information is proprietary to Abcam and/or its suppliers.
Positive control	SKBR3 cell lysate; human stomach tissue.
General notes	<p>The major RON transcript is translated into a glycosylated single chain precursor, cleaved into a 185 kDa heterodimer (p185Ron) of 35 (alpha) and 150 kDa (beta) disulfide-linked chains, before exposure at the cell surface.</p> <p>This product is a recombinant monoclonal antibody, which offers several advantages including:</p> <ul style="list-style-type: none"> - High batch-to-batch consistency and reproducibility - Improved sensitivity and specificity - Long-term security of supply - Animal-free production <p>For more information see here.</p> <p>Our RabMAb[®] technology is a patented hybridoma-based technology for making rabbit monoclonal antibodies. For details on our patents, please refer to RabMAb[®] patents.</p> <p>Mouse, Rat: We have preliminary internal testing data to indicate this antibody may not react with these species. Please contact us for more information.</p>

Properties

Form	Liquid
Storage instructions	Shipped at 4°C. Store at -20°C. Stable for 12 months at -20°C.
Storage buffer	<p>pH: 7.20</p> <p>Preservative: 0.01% Sodium azide</p> <p>Constituents: 9% PBS, 40% Glycerol (glycerin, glycerine), 0.05% BSA, 50% Tissue culture supernatant</p>

Purity	Protein A purified
Clonality	Monoclonal
Clone number	EP1132Y
Isotype	IgG

Applications

The Abpromise guarantee Our **Abpromise guarantee** covers the use of ab52927 in the following tested applications.

The application notes include recommended starting dilutions; optimal dilutions/concentrations should be determined by the end user.

Application	Abreviews	Notes
ELISA		Use at an assay dependent concentration.
Flow Cyt (Intra)		1/20 - 1/40. Methanol fixed cells. ab172730 - Rabbit monoclonal IgG, is suitable for use as an isotype control with this antibody.
WB		1/10000. Detects a band of approximately 35,150,180 kDa (predicted molecular weight: 185 kDa). 1/10000. Detects a band of approximately 35/150/180 kDa (predicted molecular weight: 185 kDa). See Notes section of Datasheet.
IP		1/30.
IHC-P	★★★★★ (1)	Use at an assay dependent concentration. Perform heat mediated antigen retrieval with citrate buffer pH 6 before commencing with IHC staining protocol.

Target

Function	Receptor for macrophage stimulating protein (MSP). Has a tyrosine-protein kinase activity.
Tissue specificity	Keratinocytes and lung.
Sequence similarities	Belongs to the protein kinase superfamily. Tyr protein kinase family. Contains 3 IPT/TIG domains. Contains 1 protein kinase domain. Contains 1 Sema domain.
Post-translational modifications	Proteolytic processing yields the two subunits. Phosphorylated in response to ligand binding.
Cellular localization	Membrane.

Images



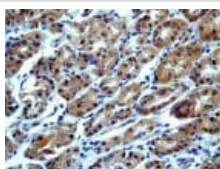
Western blot - Anti-RON antibody [EP1132Y]
(ab52927)

Anti-RON antibody [EP1132Y] (ab52927) at 1/10000 dilution + SKBR3 cell lysate at 10 µg

Secondary

HRP-labelled goat anti-rabbit

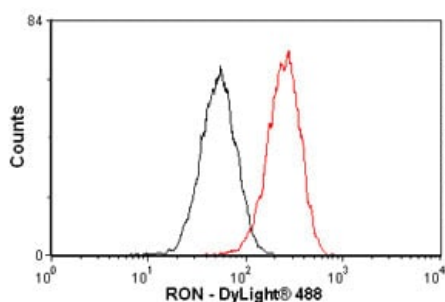
Predicted band size: 185 kDa



Immunohistochemistry (Formalin/PFA-fixed paraffin-embedded sections) - Anti-RON antibody [EP1132Y]
(ab52927)

Immunohistochemical staining of paraffin-embedded human stomach tissue using ab52927 at a dilution of 1/100-1/250.

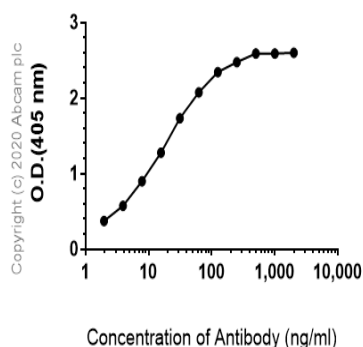
Perform heat mediated antigen retrieval with citrate buffer pH 6 before commencing with IHC staining protocol.



Flow Cytometry (Intracellular) - Anti-RON antibody
[EP1132Y] (ab52927)

Overlay histogram showing THP1 cells stained with ab52927 (red line). The cells were fixed with methanol (5 min) and incubated in 1x PBS / 10% normal goat serum / 0.3M glycine to block non-specific protein-protein interactions. The cells were then incubated with the antibody (ab52927, 1/20 dilution) for 30 min at 22°C. The secondary antibody used was DyLight® 488 goat anti-rabbit IgG (H+L) ([ab96899](#)) at 1/500 dilution for 30 min at 22°C. Isotype control antibody (black line) was rabbit monoclonal IgG (1µg/1x10⁶ cells) used under the same conditions. Acquisition of >5,000 events was performed. This antibody gave a decreased signal in THP1 cells fixed with 4% paraformaldehyde (10 min) used under the same conditions. Please note that Abcam do not have any data for use of this antibody in non-fixed cells. We welcome any customer feedback.

Indirect ELISA antibody dose-response curve antigen at 1000 ng/ml



ELISA - Anti-RON antibody [EP1132Y] (ab52927)

ELISA analysis of Human RON recombinant protein at 1000 ng/mL with ab52927. An Alkaline Phosphatase-conjugated AffiniPure Goat Anti-Rabbit IgG (H+L) at 1/2500 dilution was used as the secondary antibody.

Why choose a recombinant antibody?



Research with confidence
Consistent and reproducible results



Long-term and scalable supply
Recombinant technology



Success from the first experiment
Confirmed specificity



Ethical standards compliant
Animal-free production

Anti-RON antibody [EP1132Y] (ab52927)

Please note: All products are "FOR RESEARCH USE ONLY. NOT FOR USE IN DIAGNOSTIC PROCEDURES"

Our Abpromise to you: Quality guaranteed and expert technical support

- Replacement or refund for products not performing as stated on the datasheet
- Valid for 12 months from date of delivery
- Response to your inquiry within 24 hours
- We provide support in Chinese, English, French, German, Japanese and Spanish
- Extensive multi-media technical resources to help you
- We investigate all quality concerns to ensure our products perform to the highest standards

If the product does not perform as described on this datasheet, we will offer a refund or replacement. For full details of the Abpromise, please visit <https://www.abcam.com/abpromise> or contact our technical team.

Terms and conditions

- Guarantee only valid for products bought direct from Abcam or one of our authorized distributors