


Product datasheet

Anti-RP2 antibody [EPR11362] ab174840

Recombinant **RabMAb**

[1 References](#) [3 Images](#)

Overview

Product name	Anti-RP2 antibody [EPR11362]
Description	Rabbit monoclonal [EPR11362] to RP2
Host species	Rabbit
Tested applications	Suitable for: Flow Cyt (Intra), WB Unsuitable for: IF, IHC or IP
Species reactivity	Reacts with: Human Predicted to work with: Mouse, Rat 
Immunogen	Synthetic peptide. This information is proprietary to Abcam and/or its suppliers.
Positive control	HeLa and Sh-SY5Y cell lysates; HeLa cells.
General notes	<p>This product is a recombinant monoclonal antibody, which offers several advantages including:</p> <ul style="list-style-type: none"> - High batch-to-batch consistency and reproducibility - Improved sensitivity and specificity - Long-term security of supply - Animal-free production <p>For more information see here.</p> <p>Our RabMAb[®] technology is a patented hybridoma-based technology for making rabbit monoclonal antibodies. For details on our patents, please refer to RabMAb[®] patents.</p>

Properties

Form	Liquid
Storage instructions	Shipped at 4°C. Store at +4°C short term (1-2 weeks). Upon delivery aliquot. Store at -20°C long term. Avoid freeze / thaw cycle.
Storage buffer	pH: 7.20 Preservative: 0.01% Sodium azide Constituents: 9% PBS, 40% Glycerol (glycerin, glycerine), 0.05% BSA, 50% Tissue culture supernatant
Purity	Tissue culture supernatant
Clonality	Monoclonal

Clone number EPR11362
Isotype IgG

Applications

The Abpromise guarantee Our **Abpromise guarantee** covers the use of ab174840 in the following tested applications.
The application notes include recommended starting dilutions; optimal dilutions/concentrations should be determined by the end user.

Application	Abreviews	Notes
Flow Cyt (Intra)		1/100 - 1/500. ab172730 - Rabbit monoclonal IgG, is suitable for use as an isotype control with this antibody.
WB		1/1000 - 1/5000. Predicted molecular weight: 40 kDa.

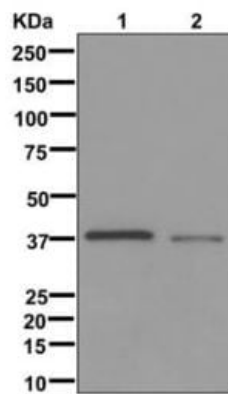
Application notes Is unsuitable for IF,IHC or IP.

Target

Relevance Function: Acts as a GTPase-activating protein (GAP) involved in trafficking between the Golgi and the ciliary membrane. Involved in localization of proteins, such as NPHP3, to the cilium membrane by inducing hydrolysis of GTP ARL3, leading to the release of UNC119 (or UNC119B). Acts as a GTPase-activating protein (GAP) for tubulin in concert with tubulin-specific chaperone C, but does not enhance tubulin heterodimerization. Acts as guanine nucleotide dissociation inhibitor towards ADP-ribosylation factor-like proteins. Tissue specificity: Ubiquitous. Expressed in the rod and cone photoreceptors, extending from the tips of the outer segment (OS) through the inner segment (IS) and outer nuclear layer (ONL) and into the synaptic terminals of the outer plexiform layer (ONL). Also detected in the bipolar, horizontal and amacrine cells in the inner nuclear layer (INL), extending to the inner plexiform layer (IPL) and though the ganglion cell layer (GCL) and into the nerve fiber layer (NFL) (at protein level). Disease: Retinitis pigmentosa 2 Similarity: Belongs to the TBCC family. Contains 1 C-CAP/cofactor C-like domain. PTM: Myristoylated on Gly-2; which may be required for membrane targeting. Palmitoylated on Cys-3; which may be required for plasma membrane targeting (Probable). Mutation of Cys-3 targets the protein to internal membranes.

Cellular localization Cell membrane; Lipid-anchor; Cytoplasmic side

Images



Western blot - Anti-RP2 antibody [EPR11362]
(ab174840)

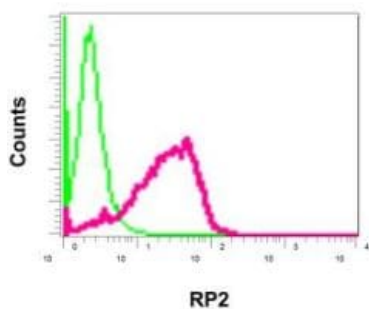
All lanes : Anti-RP2 antibody [EPR11362] (ab174840) at 1/1000 dilution

Lane 1 : HeLa cell lysate

Lane 2 : Sh-SY5Y cell lysate

Lysates/proteins at 10 µg per lane.

Predicted band size: 40 kDa



Flow Cytometry (Intracellular) - Anti-RP2 antibody
[EPR11362] (ab174840)

Intracellular flow cytometric analysis of permeabilized HeLa cells labeling RP2 with ab174840 at a 1/100 dilution (red), or a rabbit IgG (negative) (green).

Why choose a recombinant antibody?



Research with confidence
Consistent and reproducible results



Long-term and scalable supply
Recombinant technology



Success from the first experiment
Confirmed specificity



Ethical standards compliant
Animal-free production

Anti-RP2 antibody [EPR11362] (ab174840)

Please note: All products are "FOR RESEARCH USE ONLY. NOT FOR USE IN DIAGNOSTIC PROCEDURES"

Our Abpromise to you: Quality guaranteed and expert technical support

- Replacement or refund for products not performing as stated on the datasheet
- Valid for 12 months from date of delivery
- Response to your inquiry within 24 hours
- We provide support in Chinese, English, French, German, Japanese and Spanish
- Extensive multi-media technical resources to help you
- We investigate all quality concerns to ensure our products perform to the highest standards

If the product does not perform as described on this datasheet, we will offer a refund or replacement. For full details of the Abpromise, please visit <https://www.abcam.com/abpromise> or contact our technical team.

Terms and conditions

- Guarantee only valid for products bought direct from Abcam or one of our authorized distributors