


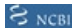


Anti-RPL12 antibody ab157130

[3 References](#) [1 Image](#)

Overview

Product name	Anti-RPL12 antibody
Description	Rabbit polyclonal to RPL12
Host species	Rabbit
Tested applications	Suitable for: WB
Species reactivity	<p>Reacts with: Mouse, Human</p> <p>Predicted to work with: Rat, Rabbit, Cow, Dog, Pig, Xenopus laevis, Chimpanzee, Lizard, Rhesus monkey, Gorilla, Chinese hamster, Orangutan, Xenopus tropicalis </p>
Immunogen	<p>Recombinant fragment corresponding to a region between residues 115-165 of Human RPL12 (NP_000967.1).</p> <p> Run BLAST with  Run BLAST with </p>
Positive control	Jurkat, HeLa, 293T and mouse NIH3T3 whole cell lysates.
General notes	<p>The Life Science industry has been in the grips of a reproducibility crisis for a number of years. Abcam is leading the way in addressing this with our range of recombinant monoclonal antibodies and knockout edited cell lines for gold-standard validation. Please check that this product meets your needs before purchasing.</p> <p>If you have any questions, special requirements or concerns, please send us an inquiry and/or contact our Support team ahead of purchase. Recommended alternatives for this product can be found below, along with publications, customer reviews and Q&As</p>

Properties

Form	Liquid
Storage instructions	Shipped at 4°C. Upon delivery aliquot and store at -20°C. Avoid freeze / thaw cycles.
Storage buffer	<p>pH: 7</p> <p>Preservative: 0.09% Sodium azide</p> <p>Constituent: 99% Tris citrate/phosphate</p> <p>pH 7 to 8</p>
Purity	Immunogen affinity purified
Clonality	Polyclonal
Isotype	IgG

Applications

The Abpromise guarantee

Our **Abpromise guarantee** covers the use of ab157130 in the following tested applications.

The application notes include recommended starting dilutions; optimal dilutions/concentrations should be determined by the end user.

Application	Abreviews	Notes
WB		1/1000 - 1/5000. Predicted molecular weight: 18 kDa.

Target

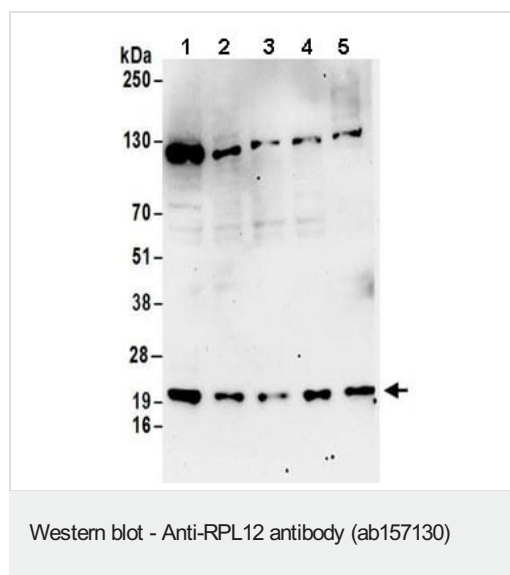
Function

Binds directly to 26S ribosomal RNA.

Sequence similarities

Belongs to the ribosomal protein L11P family.

Images



All lanes : Anti-RPL12 antibody (ab157130) at 0.4 µg/ml

Lane 1 : Jurkat whole cell lysate at 50 µg

Lane 2 : Jurkat whole cell lysate at 15 µg

Lane 3 : HeLa whole cell lysate at 50 µg

Lane 4 : 293T whole cell lysate at 50 µg

Lane 5 : NIH3T3 whole cell lysate at 50 µg

Developed using the ECL technique.

Predicted band size: 18 kDa

Exposure time: 3 minutes

Please note: All products are "FOR RESEARCH USE ONLY. NOT FOR USE IN DIAGNOSTIC PROCEDURES"

Our Abpromise to you: Quality guaranteed and expert technical support

- Replacement or refund for products not performing as stated on the datasheet
- Valid for 12 months from date of delivery
- Response to your inquiry within 24 hours
- We provide support in Chinese, English, French, German, Japanese and Spanish
- Extensive multi-media technical resources to help you
- We investigate all quality concerns to ensure our products perform to the highest standards

If the product does not perform as described on this datasheet, we will offer a refund or replacement. For full details of the Abpromise, please visit <https://www.abcam.com/abpromise> or contact our technical team.

Terms and conditions

- Guarantee only valid for products bought direct from Abcam or one of our authorized distributors