


## Product datasheet

# Anti-RPL13 antibody [EPR8828] ab134961

Recombinant RabMAb

[3 References](#) [5 Images](#)

### Overview

<b>Product name</b>	Anti-RPL13 antibody [EPR8828]
<b>Description</b>	Rabbit monoclonal [EPR8828] to RPL13
<b>Host species</b>	Rabbit
<b>Tested applications</b>	<b>Suitable for:</b> WB, IHC-P, ICC/IF <b>Unsuitable for:</b> Flow Cyt or IP
<b>Species reactivity</b>	<b>Reacts with:</b> Human <b>Predicted to work with:</b> Mouse, Rat 
<b>Immunogen</b>	Synthetic peptide within Human RPL13 aa 1-100. The exact sequence is proprietary.
<b>Positive control</b>	Hela; Jurkat; K562 and MCF7 cell lysates; Human kidney and thyroid gland adenocarcinoma tissues; MCF7 cells
<b>General notes</b>	<p>This product is a recombinant monoclonal antibody, which offers several advantages including:</p> <ul style="list-style-type: none"><li>- High batch-to-batch consistency and reproducibility</li><li>- Improved sensitivity and specificity</li><li>- Long-term security of supply</li><li>- Animal-free production</li></ul> <p>For more information <a href="#">see here</a>.</p> <p>Our RabMAb<sup>®</sup> technology is a patented hybridoma-based technology for making rabbit monoclonal antibodies. For details on our patents, please refer to <a href="#">RabMAb<sup>®</sup> patents</a>.</p>

### Properties

<b>Form</b>	Liquid
<b>Storage instructions</b>	Shipped at 4°C. Store at -20°C.
<b>Storage buffer</b>	pH: 7.2 Preservative: 0.01% Sodium azide Constituents: 9% PBS, 40% Glycerol (glycerin, glycerine), 0.05% BSA, 50% Tissue culture supernatant
<b>Purity</b>	Protein A purified
<b>Clonality</b>	Monoclonal

Clone number                      EPR8828

Isotype                                IgG

## Applications

**The Abpromise guarantee**            Our **Abpromise guarantee** covers the use of ab134961 in the following tested applications.

The application notes include recommended starting dilutions; optimal dilutions/concentrations should be determined by the end user.

Application	Abreviews	Notes
WB		1/1000 - 1/10000. Predicted molecular weight: 24 kDa.
IHC-P		1/250 - 1/500. Perform heat mediated antigen retrieval with citrate buffer pH 6 before commencing with IHC staining protocol.
ICC/IF		1/250 - 1/500.

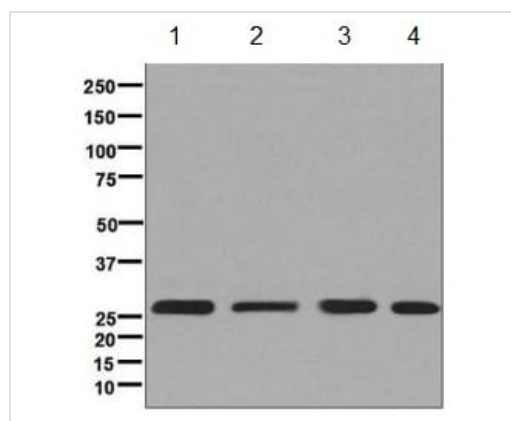
**Application notes**                      Is unsuitable for Flow Cyt or IP.

## Target

**Tissue specificity**                      Higher levels of expression in benign breast lesions than in carcinomas.

**Sequence similarities**                      Belongs to the ribosomal protein L13e family.

## Images



Western blot - Anti-RPL13 antibody [EPR8828]  
(ab134961)

**All lanes** : Anti-RPL13 antibody [EPR8828] (ab134961) at 1/1000 dilution

**Lane 1** : HeLa cell lysate

**Lane 2** : Jurkat cell lysate

**Lane 3** : K562 cell lysate

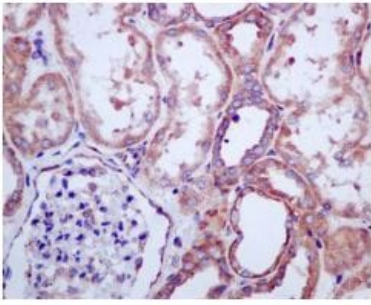
**Lane 4** : MCF7 cell lysate

Lysates/proteins at 10 µg per lane.

### Secondary

**All lanes** : HRP labeled goat anti-rabbit at 1/2000 dilution

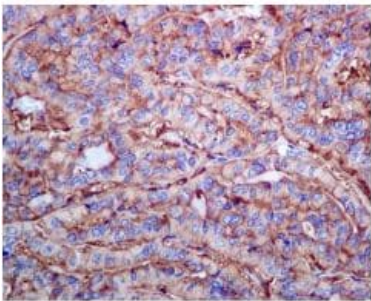
**Predicted band size:** 24 kDa



Immunohistochemistry (Formalin/PFA-fixed paraffin-embedded sections) - Anti-RPL13 antibody [EPR8828] (ab134961)

Immunohistochemical analysis of paraffin-embedded Human kidney tissue labelling RPL13 with ab134961 at 1/250 dilution.

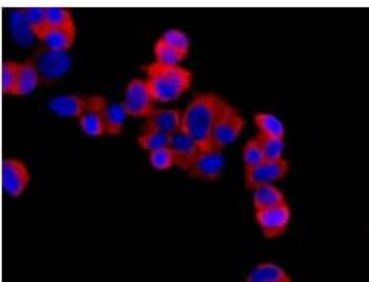
Perform heat mediated antigen retrieval with citrate buffer pH 6 before commencing with IHC staining protocol.



Immunohistochemistry (Formalin/PFA-fixed paraffin-embedded sections) - Anti-RPL13 antibody [EPR8828] (ab134961)

Immunohistochemical analysis of paraffin-embedded Human thyroid gland adenocarcinoma tissue labelling RPL13 with ab134961 at 1/250 dilution.


Perform heat mediated antigen retrieval with citrate buffer pH 6 before commencing with IHC staining protocol.



Immunocytochemistry/ Immunofluorescence - Anti-RPL13 antibody [EPR8828] (ab134961)

Immunofluorescent analysis of MCF7 cells labelling RPL13 with ab134961 at 1/250 dilution.

Why choose a recombinant antibody?



**Research with confidence**  
Consistent and reproducible results

**Long-term and scalable supply**  
Recombinant technology

**Success from the first experiment**  
Confirmed specificity

**Ethical standards compliant**  
Animal-free production

Anti-RPL13 antibody [EPR8828] (ab134961)

**Please note:** All products are "FOR RESEARCH USE ONLY. NOT FOR USE IN DIAGNOSTIC PROCEDURES"

### Our Abpromise to you: Quality guaranteed and expert technical support

---

- Replacement or refund for products not performing as stated on the datasheet
- Valid for 12 months from date of delivery
- Response to your inquiry within 24 hours
- We provide support in Chinese, English, French, German, Japanese and Spanish
- Extensive multi-media technical resources to help you
- We investigate all quality concerns to ensure our products perform to the highest standards

If the product does not perform as described on this datasheet, we will offer a refund or replacement. For full details of the Abpromise, please visit <https://www.abcam.com/abpromise> or contact our technical team.

### Terms and conditions

---

- Guarantee only valid for products bought direct from Abcam or one of our authorized distributors