


Product datasheet

Anti-RPL27A antibody ab74731

★★★★☆ [4 Abreviews](#) [6 References](#) [2 Images](#)

Overview

Product name	Anti-RPL27A antibody
Description	Rabbit polyclonal to RPL27A
Host species	Rabbit
Tested applications	Suitable for: WB, ICC/IF
Species reactivity	Reacts with: Human Predicted to work with: Rat 
Immunogen	synthesized peptide derived from C-terminal region of human RPL27A.
General notes	<p>The Life Science industry has been in the grips of a reproducibility crisis for a number of years. Abcam is leading the way in addressing this with our range of recombinant monoclonal antibodies and knockout edited cell lines for gold-standard validation. Please check that this product meets your needs before purchasing.</p> <p>If you have any questions, special requirements or concerns, please send us an inquiry and/or contact our Support team ahead of purchase. Recommended alternatives for this product can be found below, along with publications, customer reviews and Q&As</p>

Properties

Form	Liquid
Storage instructions	Shipped at 4°C. Upon delivery aliquot and store at -20°C. Avoid freeze / thaw cycles.
Storage buffer	<p>pH: 7.40</p> <p>Preservative: 0.02% Sodium azide</p> <p>Constituents: 50% Glycerol, 0.87% Sodium chloride, PBS</p> <p>Without Mg2+ and Ca2+</p>
Purity	Immunogen affinity purified
Clonality	Polyclonal
Isotype	IgG

Applications

The Abpromise guarantee

Our **Abpromise guarantee** covers the use of ab74731 in the following tested applications.

The application notes include recommended starting dilutions; optimal dilutions/concentrations should be determined by the end user.

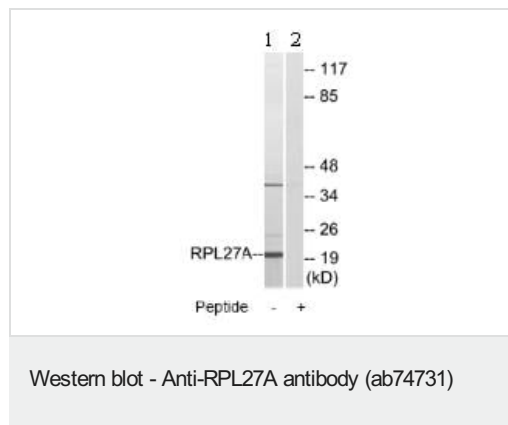
Application	Abreviews	Notes
WB	★★★★★ (3)	1/500 - 1/1000. Predicted molecular weight: 17 kDa.
ICC/IF	★★★☆☆ (1)	1/500 - 1/1000.

Target

Sequence similarities

Belongs to the ribosomal protein L15P family.

Images



All lanes : Anti-RPL27A antibody (ab74731) at 1/500 dilution

Lane 1 : extracts from COLO cells

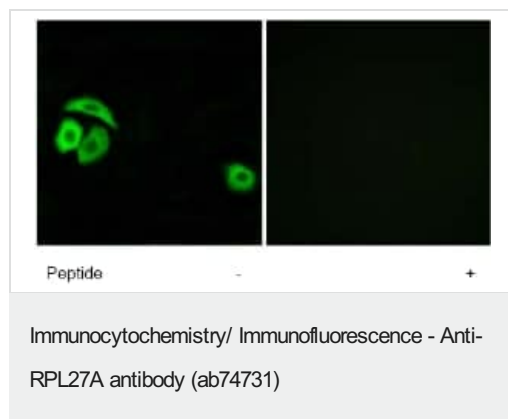
Lane 2 : extracts from COLO cells with immunising peptide at 10 µg

Lysates/proteins at 30 µg per lane.

Predicted band size: 17 kDa

Observed band size: 19 kDa

Additional bands at: 38 kDa. We are unsure as to the identity of these extra bands.



Immunofluorescence analysis of A549 cells, using ab74731 at 1/500 dilution with (+) or without (-) immunising peptide.

Please note: All products are "FOR RESEARCH USE ONLY. NOT FOR USE IN DIAGNOSTIC PROCEDURES"

Our Abpromise to you: Quality guaranteed and expert technical support

- Replacement or refund for products not performing as stated on the datasheet
- Valid for 12 months from date of delivery
- Response to your inquiry within 24 hours
- We provide support in Chinese, English, French, German, Japanese and Spanish
- Extensive multi-media technical resources to help you
- We investigate all quality concerns to ensure our products perform to the highest standards

If the product does not perform as described on this datasheet, we will offer a refund or replacement. For full details of the Abpromise, please visit <https://www.abcam.com/abpromise> or contact our technical team.

Terms and conditions

- Guarantee only valid for products bought direct from Abcam or one of our authorized distributors