


Anti-RPL3 antibody ab154882

[2 References](#) [3 Images](#)

Overview

Product name	Anti-RPL3 antibody
Description	Rabbit polyclonal to RPL3
Host species	Rabbit
Tested applications	Suitable for: WB, IHC-P, ICC/IF
Species reactivity	Reacts with: Human Predicted to work with: Chicken, Cow, Xenopus laevis, Monkey, Zebrafish, Xenopus tropicalis 
Immunogen	Recombinant fragment corresponding to a region within amino acids 1-171 of Human RPL3 (UniProt ID: P39023).
Positive control	A549 cells; Human AdCA xenograft tissue
General notes	<p>The Life Science industry has been in the grips of a reproducibility crisis for a number of years. Abcam is leading the way in addressing this with our range of recombinant monoclonal antibodies and knockout edited cell lines for gold-standard validation. Please check that this product meets your needs before purchasing.</p> <p>If you have any questions, special requirements or concerns, please send us an inquiry and/or contact our Support team ahead of purchase. Recommended alternatives for this product can be found below, along with publications, customer reviews and Q&As</p>

Properties

Form	Liquid
Storage instructions	Shipped at 4°C. Upon delivery aliquot and store at -20°C or -80°C. Avoid repeated freeze / thaw cycles.
Storage buffer	pH: 7.00 Preservative: 0.01% Thimerosal (merthiolate) Constituents: 1.21% Tris, 0.75% Glycine, 20% Glycerol (glycerin, glycerine)
Purity	Immunogen affinity purified
Clonality	Polyclonal
Isotype	IgG

Applications

The Abpromise guarantee

Our **Abpromise guarantee** covers the use of ab154882 in the following tested applications.

The application notes include recommended starting dilutions; optimal dilutions/concentrations should be determined by the end user.

Application	Abreviews	Notes
WB		1/500 - 1/3000. Predicted molecular weight: 46 kDa.
IHC-P		1/100 - 1/1000. Perform heat mediated antigen retrieval with citrate buffer pH 6 before commencing with IHC staining protocol.
ICC/IF		1/100 - 1/1000.

Target

Function

The L3 protein is a component of the large subunit of cytoplasmic ribosomes.

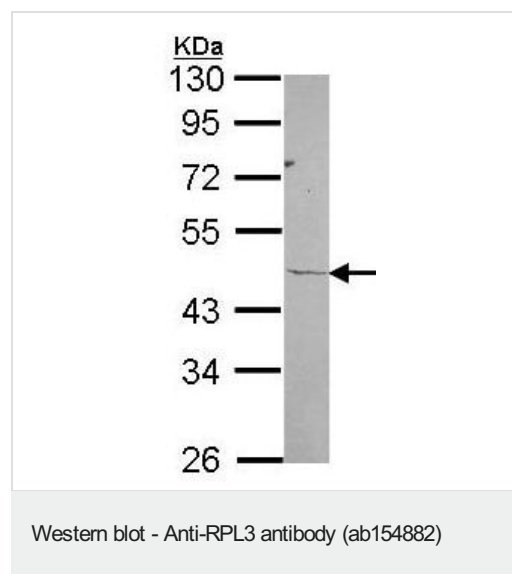
Sequence similarities

Belongs to the ribosomal protein L3P family.

Cellular localization

Cytoplasm.

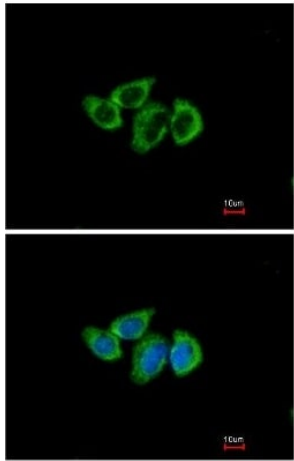
Images



Anti-RPL3 antibody (ab154882) at 1/1000 dilution + A549 whole cell lysate at 30 µg

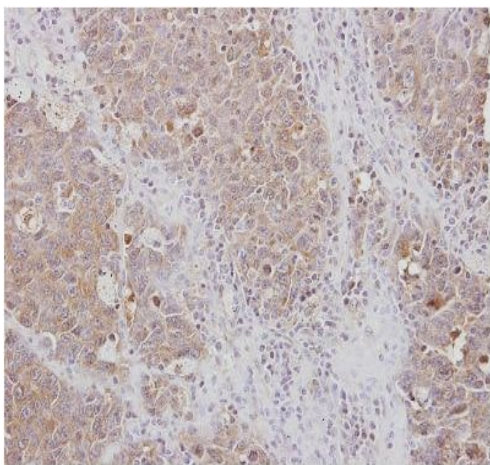
Predicted band size: 46 kDa

10% SDS PAGE



Immunofluorescence analysis of methanol fixed A549 cells, labeling RPL3 using ab154882 at 1/500 dilution. Lower image costained with Hoechst 33342.

Immunocytochemistry/ Immunofluorescence - Anti-RPL3 antibody (ab154882)



Immunohistochemical analysis of paraffin embedded Human AdCA xenograft tissue, labeling RPL3 using ab154882 at 1/100 dilution.

Immunohistochemistry (Formalin/PFA-fixed paraffin-embedded sections) - Anti-RPL3 antibody (ab154882)

Please note: All products are "FOR RESEARCH USE ONLY. NOT FOR USE IN DIAGNOSTIC PROCEDURES"

Our Abpromise to you: Quality guaranteed and expert technical support

- Replacement or refund for products not performing as stated on the datasheet
- Valid for 12 months from date of delivery
- Response to your inquiry within 24 hours
- We provide support in Chinese, English, French, German, Japanese and Spanish
- Extensive multi-media technical resources to help you
- We investigate all quality concerns to ensure our products perform to the highest standards

If the product does not perform as described on this datasheet, we will offer a refund or replacement. For full details of the Abpromise, please visit <https://www.abcam.com/abpromise> or contact our technical team.

Terms and conditions

- Guarantee only valid for products bought direct from Abcam or one of our authorized distributors