


Anti-RPL4 antibody ab154907

[1 References](#) [5 Images](#)

Overview

Product name	Anti-RPL4 antibody
Description	Rabbit polyclonal to RPL4
Host species	Rabbit
Tested applications	Suitable for: ICC, WB, IHC-P
Species reactivity	Reacts with: Mouse, Human Predicted to work with: Rat, Chicken, Cow 
Immunogen	Recombinant fragment, corresponding to a region within amino acids 60-340 of Human RPL4 (Uniprot ID: P36578).
Positive control	WB: Raji, K562 and NCI-H929 whole cell lysates; IHC-P: Human U87 xenograft, mouse colon and pancreas tissue; IF: HepG2 whole cells.
General notes	<p>The Life Science industry has been in the grips of a reproducibility crisis for a number of years. Abcam is leading the way in addressing this with our range of recombinant monoclonal antibodies and knockout edited cell lines for gold-standard validation. Please check that this product meets your needs before purchasing.</p> <p>If you have any questions, special requirements or concerns, please send us an inquiry and/or contact our Support team ahead of purchase. Recommended alternatives for this product can be found below, along with publications, customer reviews and Q&As</p>

Properties

Form	Liquid
Storage instructions	Shipped at 4°C. Store at +4°C short term (1-2 weeks). Upon delivery aliquot. Store at -20°C or -80°C. Avoid freeze / thaw cycle.
Storage buffer	pH: 7.00 Preservative: 0.01% Thimerosal (merthiolate) Constituents: 78.99% PBS, 1% BSA, 20% Glycerol (glycerin, glycerine)
Purity	Immunogen affinity purified
Clonality	Polyclonal
Isotype	IgG

Applications

The Abpromise guarantee

Our **Abpromise guarantee** covers the use of ab154907 in the following tested applications.

The application notes include recommended starting dilutions; optimal dilutions/concentrations should be determined by the end user.

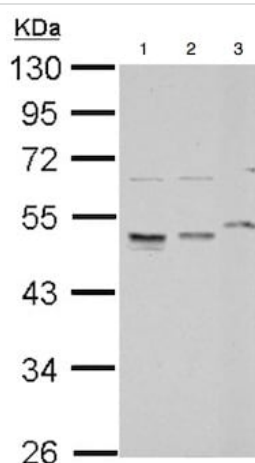
Application	Abreviews	Notes
ICC		Use at an assay dependent concentration.
WB		1/500 - 1/3000. Predicted molecular weight: 48 kDa.
IHC-P		1/100 - 1/1000.

Target

Sequence similarities

Belongs to the ribosomal protein L4P family.

Images



Western blot - Anti-RPL4 antibody (ab154907)

All lanes : Anti-RPL4 antibody (ab154907) at 1/1000 dilution

Lane 1 : Raji (human Burkitt's lymphoma cell line) whole cell lysate

Lane 2 : K562 (human chronic myelogenous leukemia cell line from bone marrow) whole cell lysate

Lane 3 : NCI-H929 (human bone marrow lymphoblast cell line) whole cell lysate

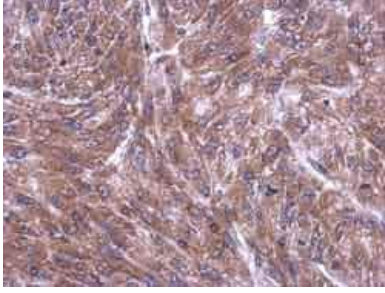
Lysates/proteins at 30 µg per lane.

Secondary

All lanes : HRP-conjugated anti-rabbit IgG antibody

Predicted band size: 48 kDa

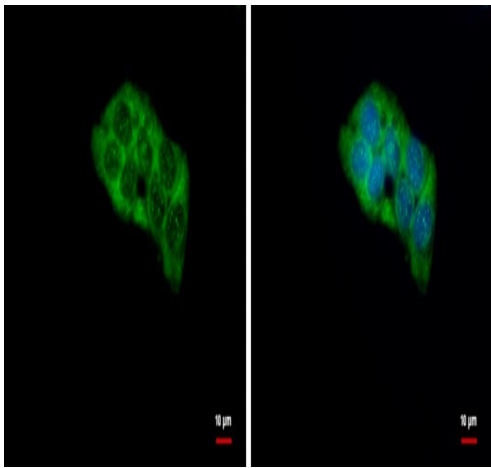
10% SDS PAGE



Immunohistochemistry (Formalin/PFA-fixed paraffin-embedded sections) - Anti-RPL4 antibody (ab154907)

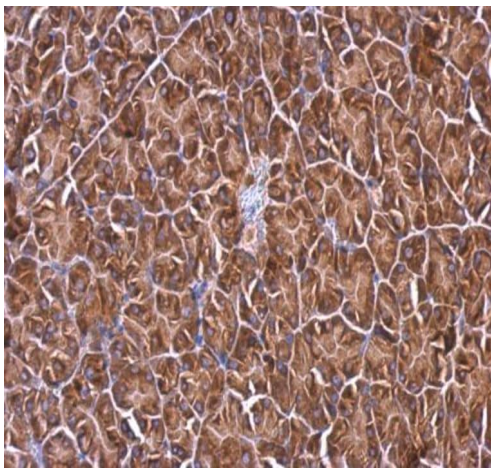
Immunohistochemical analysis of paraffin-embedded human U87 xenograft tissue staining RPL4 with ab154907 at 1/500 dilution.

Antigen Retrieval: EDTA based buffer, pH 8.0, 15min.



Immunocytochemistry - Anti-RPL4 antibody (ab154907)

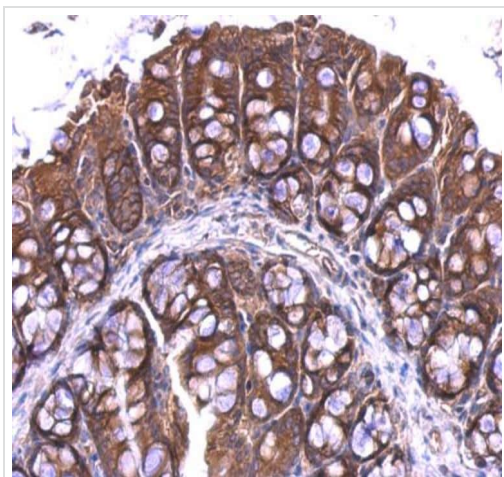
Immunofluorescence analysis of ice-cold MeOH HepG2 (human liver hepatocellular carcinoma cell line) whole cell labeling RPL4 at cytoplasm with ab154907 at 1/500 dilution. Blue: Hoechst 33342 staining.



Immunohistochemistry (Formalin/PFA-fixed paraffin-embedded sections) - Anti-RPL4 antibody (ab154907)

Immunohistochemical analysis of paraffin-embedded mouse pancreas tissue staining RPL4 at cytosol with ab154907 at 1/500 dilution.

Antigen Retrieval: EDTA based buffer, pH 8.0, 15min.



Immunohistochemistry (Formalin/PFA-fixed paraffin-embedded sections) - Anti-RPL4 antibody (ab154907)

Immunohistochemical analysis of paraffin-embedded mouse colon tissue staining RPL4 at cytosol with ab154907 at 1/500 dilution.

Antigen Retrieval: EDTA based buffer, pH 8.0, 15min.

Please note: All products are "FOR RESEARCH USE ONLY. NOT FOR USE IN DIAGNOSTIC PROCEDURES"

Our Abpromise to you: Quality guaranteed and expert technical support

- Replacement or refund for products not performing as stated on the datasheet
- Valid for 12 months from date of delivery
- Response to your inquiry within 24 hours
- We provide support in Chinese, English, French, German, Japanese and Spanish
- Extensive multi-media technical resources to help you
- We investigate all quality concerns to ensure our products perform to the highest standards

If the product does not perform as described on this datasheet, we will offer a refund or replacement. For full details of the Abpromise, please visit <https://www.abcam.com/abpromise> or contact our technical team.

Terms and conditions

- Guarantee only valid for products bought direct from Abcam or one of our authorized distributors