


Product datasheet

Anti-RPL5 antibody ab137617

[5 References](#) [4 Images](#)

Overview

Product name	Anti-RPL5 antibody
Description	Rabbit polyclonal to RPL5
Host species	Rabbit
Tested applications	Suitable for: WB, ICC/IF, IHC-P
Species reactivity	Reacts with: Mouse, Human Predicted to work with: Rat, Rabbit, Chicken, Cow, Pig 
Immunogen	Recombinant fragment, corresponding to a region within amino acids 142-297 of Human RPL5.
Positive control	293T, A431, H1299, HeLaS3, HepG2, MOLT4, Raji cell lysates; Mouse brain; HepG2 cells; Gastric CA N87 xenograft tissue
General notes	<p>The Life Science industry has been in the grips of a reproducibility crisis for a number of years. Abcam is leading the way in addressing this with our range of recombinant monoclonal antibodies and knockout edited cell lines for gold-standard validation. Please check that this product meets your needs before purchasing.</p> <p>If you have any questions, special requirements or concerns, please send us an inquiry and/or contact our Support team ahead of purchase. Recommended alternatives for this product can be found below, along with publications, customer reviews and Q&As</p>

Properties

Form	Liquid
Storage instructions	Shipped at 4°C. Upon delivery aliquot. Store at -20°C or -80°C. Avoid freeze / thaw cycle.
Storage buffer	pH: 7.00 Preservative: 0.025% Proclin 300 Constituents: 79% PBS, 20% Glycerol (glycerin, glycerine)
Purity	Immunogen affinity purified
Clonality	Polyclonal
Isotype	IgG

Applications

The Abpromise guarantee

Our **Abpromise guarantee** covers the use of ab137617 in the following tested applications.

The application notes include recommended starting dilutions; optimal dilutions/concentrations should be determined by the end user.

Application	Abreviews	Notes
WB		1/500 - 1/3000. Predicted molecular weight: 34 kDa.
ICC/IF		1/100 - 1/1000.
IHC-P		1/100 - 1/1000. Perform heat mediated antigen retrieval with citrate buffer pH 6 before commencing with IHC staining protocol.

Target

Function

Required for rRNA maturation and formation of the 60S ribosomal subunits. This protein binds 5S RNA.

Involvement in disease

Defects in RPL5 are the cause of Diamond-Blackfan anemia type 6 (DBA6) [MIM:612561]. DBA6 is a form of Diamond-Blackfan anemia, a congenital non-regenerative hypoplastic anemia that usually presents early in infancy. Diamond-Blackfan anemia is characterized by a moderate to severe macrocytic anemia, erythroblastopenia, and an increased risk of malignancy. 30 to 40% of Diamond-Blackfan anemia patients present with short stature and congenital anomalies, the most frequent being craniofacial (Pierre-Robin syndrome and cleft palate), thumb and urogenital anomalies.

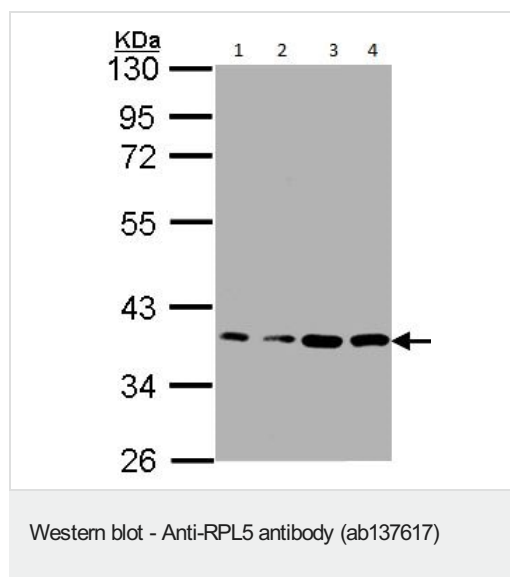
Sequence similarities

Belongs to the ribosomal protein L18P family.

Cellular localization

Cytoplasm. Nucleus > nucleolus.

Images



All lanes : Anti-RPL5 antibody (ab137617) at 1/1000 dilution

Lane 1 : A431 whole cell lysate

Lane 2 : H1299 whole cell lysate

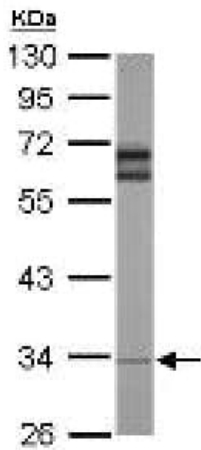
Lane 3 : HeLaS3 whole cell lysate

Lane 4 : MOLT4 whole cell lysate

Lysates/proteins at 30 µg per lane.

Predicted band size: 34 kDa

12% SDS PAGE

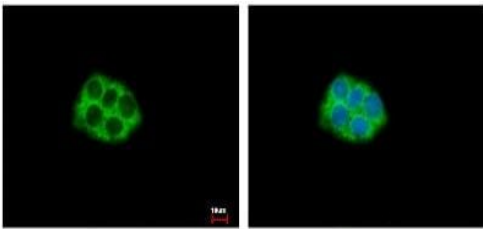


Western blot - Anti-RPL5 antibody (ab137617)

Anti-RPL5 antibody (ab137617) at 1/1000 dilution + Mouse brain whole cell lysate at 50 μ g

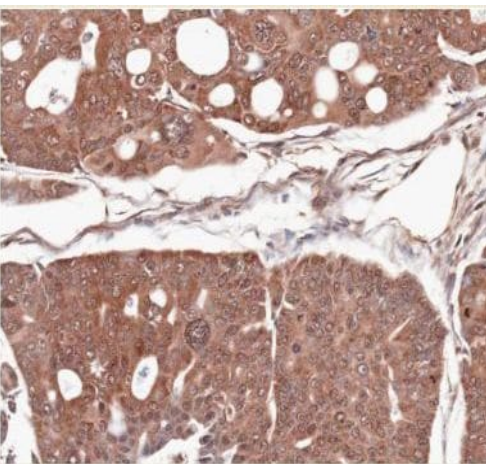
Predicted band size: 34 kDa

10% SDS PAGE



Immunocytochemistry/ Immunofluorescence - Anti-RPL5 antibody (ab137617)

ab137617 at 1/500 dilution staining RPL5 in 4% paraformaldehyde (room temperature for 15 min) fixed HepG2 cells by Immunofluorescence (green). Blue staining: Hoechst 33343.



Immunohistochemistry (Formalin/PFA-fixed paraffin-embedded sections) - Anti-RPL5 antibody (ab137617)

ab137617 at 1/100 dilution, staining RPL5 in paraffin embedded Gastric CA N87 xenograft tissue by Immunohistochemistry.

Please note: All products are "FOR RESEARCH USE ONLY. NOT FOR USE IN DIAGNOSTIC PROCEDURES"

Our Abpromise to you: Quality guaranteed and expert technical support

- Replacement or refund for products not performing as stated on the datasheet
- Valid for 12 months from date of delivery
- Response to your inquiry within 24 hours

- We provide support in Chinese, English, French, German, Japanese and Spanish
- Extensive multi-media technical resources to help you
- We investigate all quality concerns to ensure our products perform to the highest standards

If the product does not perform as described on this datasheet, we will offer a refund or replacement. For full details of the Abpromise, please visit <https://www.abcam.com/abpromise> or contact our technical team.

Terms and conditions

- Guarantee only valid for products bought direct from Abcam or one of our authorized distributors