


Product datasheet

Anti-RPL7A antibody ab155147

★★★★★ [1 Abreviews](#) [2 References](#) [4 Images](#)

Overview

Product name	Anti-RPL7A antibody
Description	Rabbit polyclonal to RPL7A
Host species	Rabbit
Tested applications	Suitable for: WB, IHC-P, ICC/IF
Species reactivity	Reacts with: Mouse, Human Predicted to work with: Rat, Chicken, Cow, Xenopus laevis, Monkey, Zebrafish, Xenopus tropicalis 
Immunogen	Recombinant fragment, corresponding to a region within amino acids 15-296 of Human RPL7A (UniProt P62424).
Positive control	A431, Jurkat, Raji, Neuro2A, GL261 and C8D30 whole cell lysates; A431 cells; Human lung adenocarcinoma tissue.
General notes	<p>The Life Science industry has been in the grips of a reproducibility crisis for a number of years. Abcam is leading the way in addressing this with our range of recombinant monoclonal antibodies and knockout edited cell lines for gold-standard validation. Please check that this product meets your needs before purchasing.</p> <p>If you have any questions, special requirements or concerns, please send us an inquiry and/or contact our Support team ahead of purchase. Recommended alternatives for this product can be found below, along with publications, customer reviews and Q&As</p>

Properties

Form	Liquid
Storage instructions	Shipped at 4°C. Upon delivery aliquot. Store at -20°C or -80°C. Avoid freeze / thaw cycle.
Storage buffer	pH: 7.00 Preservative: 0.01% Thimerosal (merthiolate) Constituents: 1.21% Tris, 0.75% Glycine, 20% Glycerol (glycerin, glycerine)
Purity	Immunogen affinity purified
Clonality	Polyclonal
Isotype	IgG

Applications

The Abpromise guarantee

Our **Abpromise guarantee** covers the use of ab155147 in the following tested applications.

The application notes include recommended starting dilutions; optimal dilutions/concentrations should be determined by the end user.

Application	Abreviews	Notes
WB	★★★★★ (1)	1/500 - 1/3000. Predicted molecular weight: 30 kDa.
IHC-P		1/100 - 1/1000. Perform heat mediated antigen retrieval before commencing with IHC staining protocol using 10mM Citrate buffer (pH6.0) or Tris-EDTA buffer (pH8.0).
ICC/IF		1/100 - 1/1000.

Target

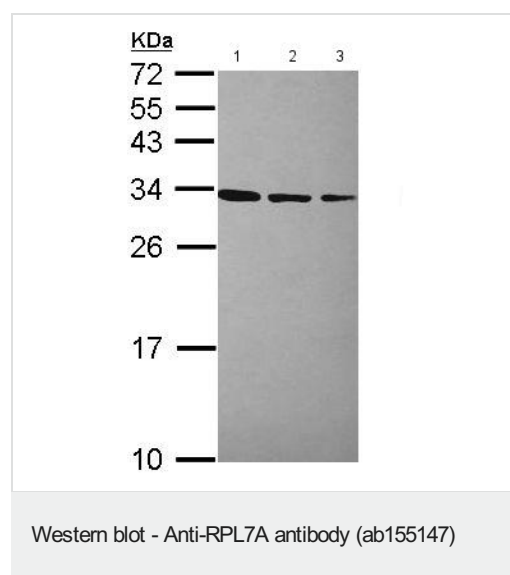
Involvement in disease

Note=Chromosomal recombination involving RPL7A activates the receptor kinase domain of the TRK oncogene.

Sequence similarities

Belongs to the ribosomal protein L7Ae family.

Images



All lanes : Anti-RPL7A antibody (ab155147) at 1/1000 dilution

Lane 1 : A431 whole cell lysate

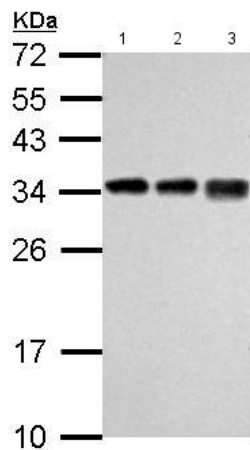
Lane 2 : Jurkat whole cell lysate

Lane 3 : Raji whole cell lysate

Lysates/proteins at 30 µg per lane.

Predicted band size: 30 kDa

12% SDS PAGE



Western blot - Anti-RPL7A antibody (ab155147)

All lanes : Anti-RPL7A antibody (ab155147) at 1/3000 dilution

Lane 1 : Neuro2A whole cell lysate

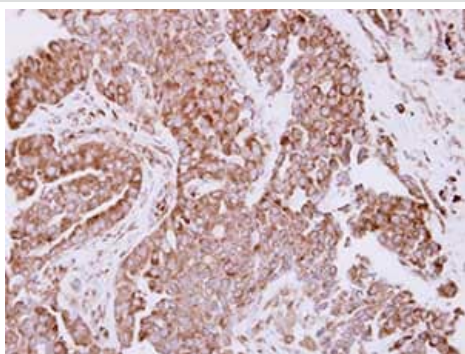
Lane 2 : GL261 whole cell lysate

Lane 3 : C8D30 whole cell lysate

Lysates/proteins at 30 µg per lane.

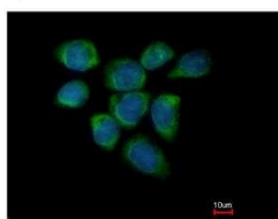
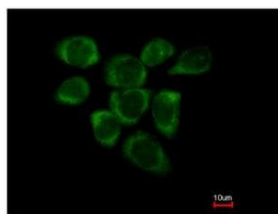
Predicted band size: 30 kDa

12% SDS PAGE



Immunohistochemistry (Formalin/PFA-fixed paraffin-embedded sections) - Anti-RPL7A antibody (ab155147)

Immunohistochemical analysis of paraffin-embedded Human lung adenocarcinoma tissue labeling RPL7A with ab155147 at 1/500 dilution.



Immunofluorescent analysis of methanol-fixed A431 cells labeling RPL7A with ab155147 at 1/200 dilution. Lower panel co-stained with Hoechst 33342.

Immunocytochemistry/ Immunofluorescence - Anti-RPL7A antibody (ab155147)

Please note: All products are "FOR RESEARCH USE ONLY. NOT FOR USE IN DIAGNOSTIC PROCEDURES"

Our Abpromise to you: Quality guaranteed and expert technical support

- Replacement or refund for products not performing as stated on the datasheet
- Valid for 12 months from date of delivery
- Response to your inquiry within 24 hours
- We provide support in Chinese, English, French, German, Japanese and Spanish
- Extensive multi-media technical resources to help you
- We investigate all quality concerns to ensure our products perform to the highest standards

If the product does not perform as described on this datasheet, we will offer a refund or replacement. For full details of the Abpromise, please visit <https://www.abcam.com/abpromise> or contact our technical team.

Terms and conditions

- Guarantee only valid for products bought direct from Abcam or one of our authorized distributors