


Anti-RPL9 antibody ab102011

[2 References](#) [3 Images](#)

Overview

Product name	Anti-RPL9 antibody
Description	Rabbit polyclonal to RPL9
Host species	Rabbit
Tested applications	Suitable for: WB, ICC/IF
Species reactivity	Reacts with: Mouse, Human Predicted to work with: Rat, Cow, Zebrafish 
Immunogen	Recombinant protein fragment containing a sequence corresponding to a region within amino acids 20 and 167 of Human RPL9 (AAH00483)
Positive control	A549, HeLa, HepG2, HCT116, mouse brain
General notes	<p>The Life Science industry has been in the grips of a reproducibility crisis for a number of years. Abcam is leading the way in addressing this with our range of recombinant monoclonal antibodies and knockout edited cell lines for gold-standard validation. Please check that this product meets your needs before purchasing.</p> <p>If you have any questions, special requirements or concerns, please send us an inquiry and/or contact our Support team ahead of purchase. Recommended alternatives for this product can be found below, along with publications, customer reviews and Q&As</p>

Properties

Form	Liquid
Storage instructions	Shipped at 4°C. Upon delivery aliquot and store at -20°C or -80°C. Avoid repeated freeze / thaw cycles.
Storage buffer	pH: 7.00 Preservative: 0.01% Thimerosal (merthiolate) Constituents: 1.21% Tris, 0.75% Glycine, 20% Glycerol (glycerin, glycerine)
Purity	Immunogen affinity purified
Clonality	Polyclonal
Isotype	IgG

Applications

The Abpromise guarantee

Our **Abpromise guarantee** covers the use of ab102011 in the following tested applications.

The application notes include recommended starting dilutions; optimal dilutions/concentrations should be determined by the end user.

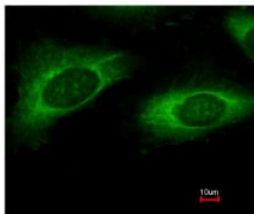
Application	Abreviews	Notes
WB		1/500 - 1/3000. Predicted molecular weight: 22 kDa.
ICC/IF		1/100 - 1/200.

Target

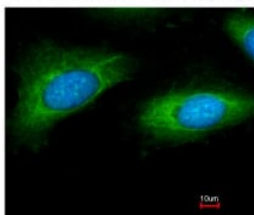
Sequence similarities

Belongs to the ribosomal protein L6P family.

Images

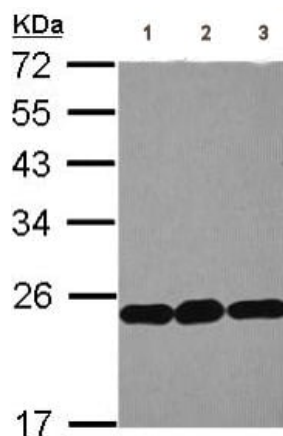


Costained with Hoechst 33342



Immunofluorescence analysis of methanol-fixed HeLa, using ab 102011 at 1/200 dilution.

Immunocytochemistry/ Immunofluorescence - Anti-RPL9 antibody (ab102011)



All lanes : Anti-RPL9 antibody (ab102011) at 1/1000 dilution

Lane 1 : HeLa whole cell lysate

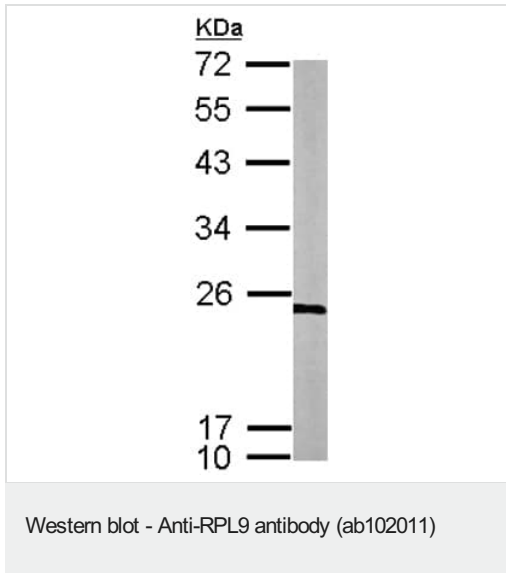
Lane 2 : HepG2 whole cell lysate

Lane 3 : HCT116 whole cell lysate

Lysates/proteins at 30 µg per lane.

Predicted band size: 22 kDa

Western blot - Anti-RPL9 antibody (ab102011)



Anti-RPL9 antibody (ab102011) at 1/1000 dilution + mouse brain whole cell lysate at 50 μ g

Predicted band size: 22 kDa

Please note: All products are "FOR RESEARCH USE ONLY. NOT FOR USE IN DIAGNOSTIC PROCEDURES"

Our Abpromise to you: Quality guaranteed and expert technical support

- Replacement or refund for products not performing as stated on the datasheet
- Valid for 12 months from date of delivery
- Response to your inquiry within 24 hours
- We provide support in Chinese, English, French, German, Japanese and Spanish
- Extensive multi-media technical resources to help you
- We investigate all quality concerns to ensure our products perform to the highest standards

If the product does not perform as described on this datasheet, we will offer a refund or replacement. For full details of the Abpromise, please visit <https://www.abcam.com/abpromise> or contact our technical team.

Terms and conditions

- Guarantee only valid for products bought direct from Abcam or one of our authorized distributors