

Product datasheet

Anti-RPLP1 antibody ab121190

[3 References](#) [6 Images](#)

Overview

Product name	Anti-RPLP1 antibody
Description	Rabbit polyclonal to RPLP1
Host species	Rabbit
Tested applications	Suitable for: ICC, IHC-P, WB
Species reactivity	Reacts with: Human
Immunogen	Recombinant fragment, corresponding to amino acids 1-109 of Human RPLP1 (P05386).
Positive control	WB: HeLa whole cell lysate; IHC-P: Human cerebral cortex, cerebellum, skin, and prostate tissues; ICC: U-2 OS cells.
General notes	<p>The Life Science industry has been in the grips of a reproducibility crisis for a number of years. Abcam is leading the way in addressing this with our range of recombinant monoclonal antibodies and knockout edited cell lines for gold-standard validation. Please check that this product meets your needs before purchasing.</p> <p>If you have any questions, special requirements or concerns, please send us an inquiry and/or contact our Support team ahead of purchase. Recommended alternatives for this product can be found below, along with publications, customer reviews and Q&As</p>

Properties

Form	Liquid
Storage instructions	Shipped at 4°C. Upon delivery aliquot and store at -20°C. Avoid freeze / thaw cycles.
Storage buffer	<p>pH: 7.20</p> <p>Preservative: 0.02% Sodium azide</p> <p>Constituents: 59% PBS, 40% Glycerol (glycerin, glycerine)</p>
Purity	Immunogen affinity purified
Clonality	Polyclonal
Isotype	IgG

Applications

The Abpromise guarantee Our **Abpromise guarantee** covers the use of ab121190 in the following tested applications.

The application notes include recommended starting dilutions; optimal dilutions/concentrations should be determined by the end user.

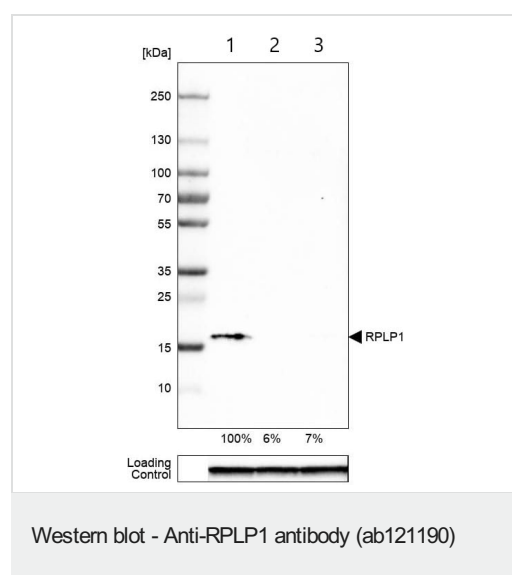
Application	Abreviews	Notes
ICC		Use a concentration of 0.25 - 2 µg/ml.
IHC-P		1/200 - 1/500. Perform heat mediated antigen retrieval with citrate buffer pH 6 before commencing with IHC staining protocol.
WB		Use a concentration of 0.04 - 0.4 µg/ml.

Target

Function Plays an important role in the elongation step of protein synthesis.

Sequence similarities Belongs to the ribosomal protein L12P family.

Images



All lanes : Anti-RPLP1 antibody (ab121190) at 0.4 µg/ml

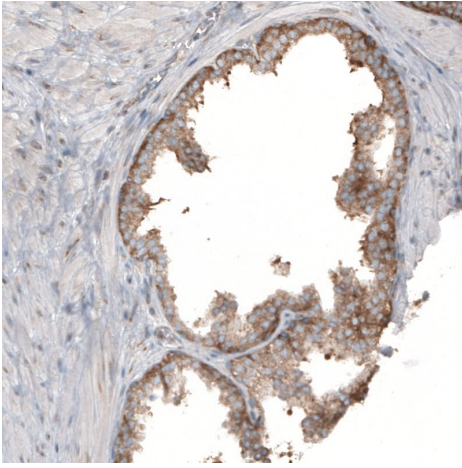
Lane 1 : HeLa (human epithelial cell line from cervix adenocarcinoma) transfected with control siRNA, whole cell lysate

Lane 2 : HeLa (human epithelial cell line from cervix adenocarcinoma) transfected with RPLP1 specific siRNA probe #1, whole cell lysate

Lane 3 : HeLa (human epithelial cell line from cervix adenocarcinoma) transfected with RPLP1 specific siRNA probe #2, whole cell lysate

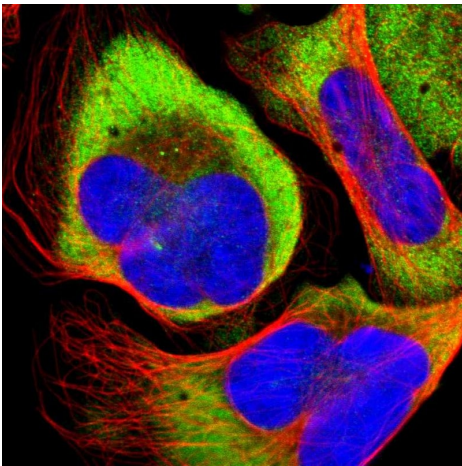
Remaining relative intensity is presented.

Loading control: Anti-GAPDH.



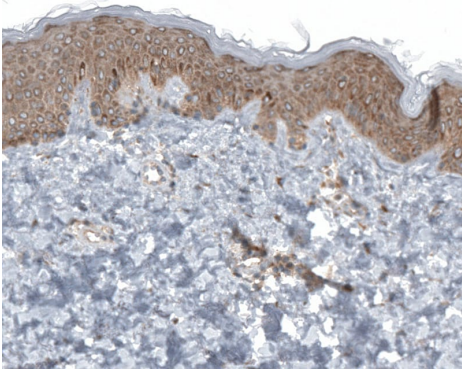
Immunohistochemistry (Formalin/PFA-fixed paraffin-embedded sections) - Anti-RPLP1 antibody (ab121190)

Immunohistochemistry (Formalin/PFA-fixed paraffin-embedded sections) analysis of human prostate tissue labelling RPLP1 with ab121190 at 1/200 dilution. Heat mediated antigen retrieval with citrate buffer pH 6 performed before commencing with IHC staining protocol.



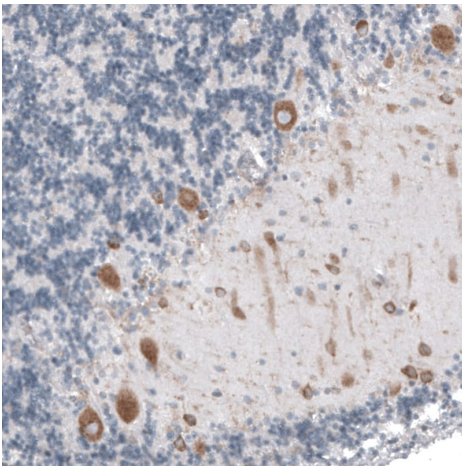
Immunocytochemistry - Anti-RPLP1 antibody (ab121190)

Immunocytochemistry analysis of U-2 OS cells labelling RPLP1 with ab121190 at 2 µg/mL. Cells were fixed with 4% paraformaldehyde and permeabilized with Triton X-100.



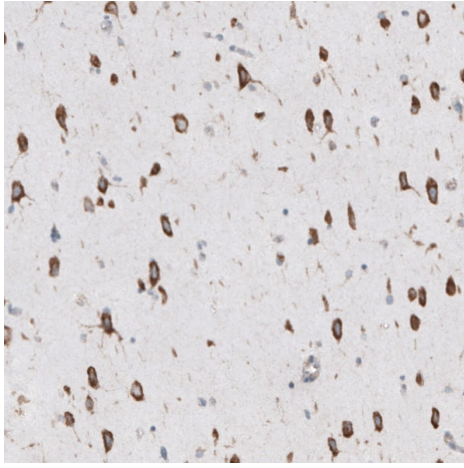
Immunohistochemistry (Formalin/PFA-fixed paraffin-embedded sections) - Anti-RPLP1 antibody (ab121190)

Immunohistochemistry (Formalin/PFA-fixed paraffin-embedded sections) analysis of human skin tissue labelling RPLP1 with ab121190 at 1/200 dilution. Heat mediated antigen retrieval with citrate buffer pH 6 performed before commencing with IHC staining protocol.



Immunohistochemistry (Formalin/PFA-fixed paraffin-embedded sections) - Anti-RPLP1 antibody (ab121190)

Immunohistochemistry (Formalin/PFA-fixed paraffin-embedded sections) analysis of human cerebellum tissue labelling RPLP1 with ab121190 at 1/200 dilution. Heat mediated antigen retrieval with citrate buffer pH 6 performed before commencing with IHC staining protocol.



Immunohistochemistry (Formalin/PFA-fixed paraffin-embedded sections) - Anti-RPLP1 antibody (ab121190)

Immunohistochemistry (Formalin/PFA-fixed paraffin-embedded sections) analysis of human cerebral cortex tissue labelling RPLP1 with ab121190 at 1/200 dilution. Heat mediated antigen retrieval with citrate buffer pH 6 performed before commencing with IHC staining protocol.

Please note: All products are "FOR RESEARCH USE ONLY. NOT FOR USE IN DIAGNOSTIC PROCEDURES"

Our Abpromise to you: Quality guaranteed and expert technical support

- Replacement or refund for products not performing as stated on the datasheet
- Valid for 12 months from date of delivery
- Response to your inquiry within 24 hours
- We provide support in Chinese, English, French, German, Japanese and Spanish
- Extensive multi-media technical resources to help you
- We investigate all quality concerns to ensure our products perform to the highest standards

If the product does not perform as described on this datasheet, we will offer a refund or replacement. For full details of the Abpromise, please visit <https://www.abcam.com/abpromise> or contact our technical team.

Terms and conditions

- Guarantee only valid for products bought direct from Abcam or one of our authorized distributors