


# Anti-RPLP2 antibody ab154958

[2 References](#) [3 Images](#)

### Overview

<b>Product name</b>	Anti-RPLP2 antibody
<b>Description</b>	Rabbit polyclonal to RPLP2
<b>Host species</b>	Rabbit
<b>Tested applications</b>	<b>Suitable for:</b> WB, IHC-P, ICC/IF
<b>Species reactivity</b>	<b>Reacts with:</b> Human <b>Predicted to work with:</b> Mouse, Cow, Monkey 
<b>Immunogen</b>	Recombinant fragment, corresponding to a region within amino acids 1-99 of Human RPLP2 (P05387).
<b>Positive control</b>	293T, A431, H1299, HeLa, HepG2, Molt4, Raji whole cell lysates; Human colon carcinoma tissue; A431 cells.
<b>General notes</b>	<p>The Life Science industry has been in the grips of a reproducibility crisis for a number of years. Abcam is leading the way in addressing this with our range of recombinant monoclonal antibodies and knockout edited cell lines for gold-standard validation. Please check that this product meets your needs before purchasing.</p> <p>If you have any questions, special requirements or concerns, please send us an inquiry and/or contact our Support team ahead of purchase. Recommended alternatives for this product can be found below, along with publications, customer reviews and Q&amp;As</p>

### Properties

<b>Form</b>	Liquid
<b>Storage instructions</b>	Shipped at 4°C. Upon delivery aliquot. Store at -20°C or -80°C. Avoid freeze / thaw cycle.
<b>Storage buffer</b>	pH: 7.00 Preservative: 0.01% Thimerosal (merthiolate) Constituents: 78.99% PBS, 1% BSA, 20% Glycerol (glycerin, glycerine)
<b>Purity</b>	Immunogen affinity purified
<b>Clonality</b>	Polyclonal
<b>Isotype</b>	IgG

### Applications

## The Abpromise guarantee

Our **Abpromise guarantee** covers the use of ab154958 in the following tested applications.

The application notes include recommended starting dilutions; optimal dilutions/concentrations should be determined by the end user.

Application	Abreviews	Notes
WB		1/500 - 1/3000. Predicted molecular weight: 12 kDa.
IHC-P		1/100 - 1/1000. Perform heat mediated antigen retrieval before commencing with IHC staining protocol using 10mM Citrate buffer (pH6.0) or Tris-EDTA buffer (pH8.0).
ICC/IF		1/100 - 1/1000.

## Target

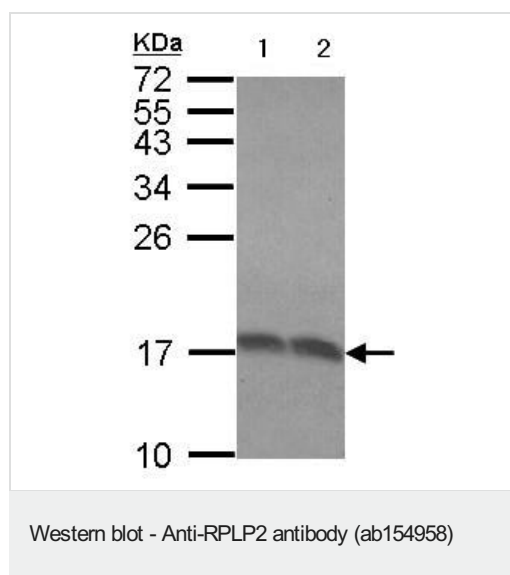
### Function

Plays an important role in the elongation step of protein synthesis.

### Sequence similarities

Belongs to the ribosomal protein L12P family.

## Images



**All lanes** : Anti-RPLP2 antibody (ab154958) at 1/1000 dilution

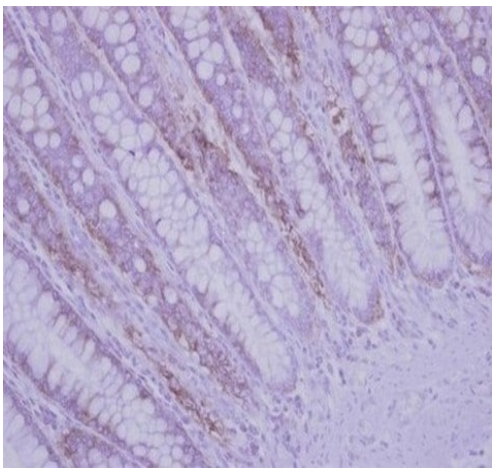
**Lane 1** : Molt4 whole cell lysate

**Lane 2** : Raji whole cell lysate

Lysates/proteins at 30 µg per lane.

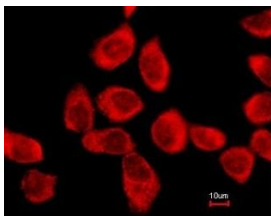
**Predicted band size:** 12 kDa

15% SDS PAGE

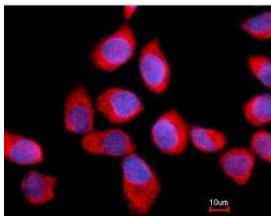


Immunohistochemical analysis of paraffin embedded Human colon carcinoma tissue labeling RPLP2 with ab154958 at 1/500.

Immunohistochemistry (Formalin/PFA-fixed paraffin-embedded sections) - Anti-RPLP2 antibody (ab154958)



Immunofluorescence analysis of methanol fixed A431 cells labeling RPLP2 with ab154958 at 1/500. Lower panel shows costaining with Hoechst 33342.



Immunocytochemistry/ Immunofluorescence - Anti-RPLP2 antibody (ab154958)

**Please note:** All products are "FOR RESEARCH USE ONLY. NOT FOR USE IN DIAGNOSTIC PROCEDURES"

### **Our Abpromise to you: Quality guaranteed and expert technical support**

---

- Replacement or refund for products not performing as stated on the datasheet
- Valid for 12 months from date of delivery
- Response to your inquiry within 24 hours
  
- We provide support in Chinese, English, French, German, Japanese and Spanish
- Extensive multi-media technical resources to help you
- We investigate all quality concerns to ensure our products perform to the highest standards

If the product does not perform as described on this datasheet, we will offer a refund or replacement. For full details of the Abpromise, please visit <https://www.abcam.com/abpromise> or contact our technical team.

### **Terms and conditions**

---

- Guarantee only valid for products bought direct from Abcam or one of our authorized distributors