

Product datasheet

Anti-RPP30 antibody [2931D5α] ab53744

[2 Images](#)

Overview

Product name	Anti-RPP30 antibody [2931D5α]
Description	Mouse monoclonal [2931D5α] to RPP30
Host species	Mouse
Tested applications	Suitable for: WB
Species reactivity	Reacts with: Mouse, Human
Immunogen	Recombinant fragment (Human)
Positive control	HeLa whole cell lysate NIH3T3 whole cell lysate
General notes	<p>The Life Science industry has been in the grips of a reproducibility crisis for a number of years. Abcam is leading the way in addressing this with our range of recombinant monoclonal antibodies and knockout edited cell lines for gold-standard validation. Please check that this product meets your needs before purchasing.</p> <p>If you have any questions, special requirements or concerns, please send us an inquiry and/or contact our Support team ahead of purchase. Recommended alternatives for this product can be found below, along with publications, customer reviews and Q&As</p>

Properties

Form	Liquid
Storage instructions	Shipped at 4°C. Store at +4°C short term (1-2 weeks). Upon delivery aliquot. Store at -20°C long term.
Storage buffer	pH: 7.40 Preservative: 0.05% Sodium azide Constituents: 1% BSA, PBS
Purity	Protein G purified
Purification notes	Purified using protein G column chromatography from culture supernatant of hybridoma cultured in a medium containing bovine IgG depleted (approximately 95%) fetal bovine serum.
Clonality	Monoclonal
Clone number	2931D5α
Isotype	IgG1

Applications

The Abpromise guarantee

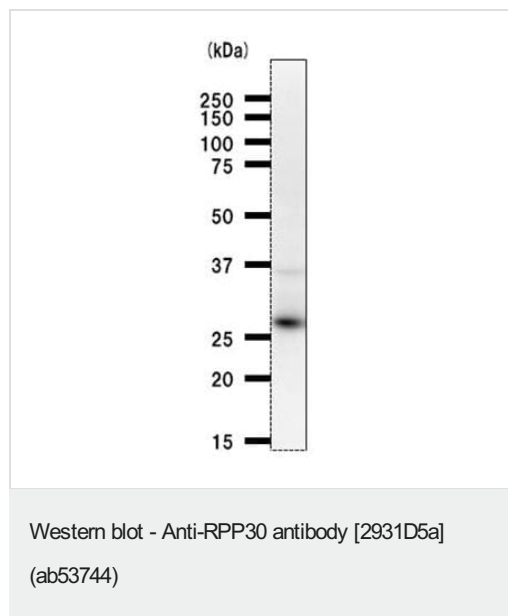
Our **Abpromise guarantee** covers the use of ab53744 in the following tested applications.

The application notes include recommended starting dilutions; optimal dilutions/concentrations should be determined by the end user.

Application	Abreviews	Notes
WB		1/100. Detects a band of approximately 30 kDa (predicted molecular weight: 30 kDa).

Target

Images



Anti-RPP30 antibody [2931D5a] (ab53744) at 1/100 dilution + HeLa whole cell lysate at 25 µg

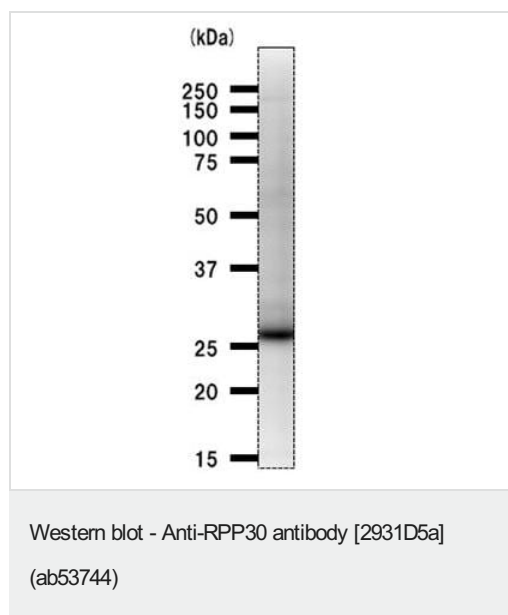
Secondary

anti Mouse IgG at 1/2500 dilution

Developed using the ECL technique.

Predicted band size: 30 kDa

Observed band size: 30 kDa



Anti-RPP30 antibody [2931D5a] (ab53744) at 1/100 dilution + NIH3T3 whole cell lysate at 25 µg

Secondary

anti Mouse IgG at 1/2500 dilution

Developed using the ECL technique.

Predicted band size: 30 kDa

Observed band size: 30 kDa

Please note: All products are "FOR RESEARCH USE ONLY. NOT FOR USE IN DIAGNOSTIC PROCEDURES"

Our Abpromise to you: Quality guaranteed and expert technical support

- Replacement or refund for products not performing as stated on the datasheet
- Valid for 12 months from date of delivery
- Response to your inquiry within 24 hours

- We provide support in Chinese, English, French, German, Japanese and Spanish
- Extensive multi-media technical resources to help you
- We investigate all quality concerns to ensure our products perform to the highest standards

If the product does not perform as described on this datasheet, we will offer a refund or replacement. For full details of the Abpromise, please visit <https://www.abcam.com/abpromise> or contact our technical team.

Terms and conditions

- Guarantee only valid for products bought direct from Abcam or one of our authorized distributors