




## Product datasheet

# Anti-RPRD2 antibody ab17996

1 Image

### Overview

---

<b>Product name</b>	Anti-RPRD2 antibody
<b>Description</b>	Goat polyclonal to RPRD2
<b>Host species</b>	Goat
<b>Tested applications</b>	<b>Suitable for:</b> WB
<b>Species reactivity</b>	<b>Reacts with:</b> Human <b>Predicted to work with:</b> Chimpanzee, Gorilla, Orangutan 
<b>Immunogen</b>	Synthetic peptide within Human RPRD2 aa 1000-1100. The exact immunogen sequence used to generate this antibody is proprietary information. If additional detail on the immunogen is needed to determine the suitability of the antibody for your needs, please <b>contact</b> our Scientific Support team to discuss your requirements. Database link: <a href="#">Q5VT52</a>  <a href="#">Run BLAST with</a>  <a href="#">Run BLAST with</a>
<b>Positive control</b>	HEK293 cells
<b>General notes</b>	<p>The Life Science industry has been in the grips of a reproducibility crisis for a number of years. Abcam is leading the way in addressing this with our range of recombinant monoclonal antibodies and knockout edited cell lines for gold-standard validation. Please check that this product meets your needs before purchasing.</p> <p>If you have any questions, special requirements or concerns, please send us an inquiry and/or contact our Support team ahead of purchase. Recommended alternatives for this product can be found below, along with publications, customer reviews and Q&amp;As</p>

### Properties

---

<b>Form</b>	Liquid
<b>Storage instructions</b>	Shipped at 4°C. Upon delivery aliquot and store at -20°C. Avoid freeze / thaw cycles.
<b>Storage buffer</b>	pH: 7 Preservative: 0.09% Sodium azide Constituents: 0.021% PBS, 1.764% Sodium citrate, 1.815% Tris
<b>Purity</b>	Immunogen affinity purified
<b>Purification notes</b>	Antibody was affinity purified using an epitope specific to RPRD2 immobilized on solid support.
<b>Clonality</b>	Polyclonal

Isotype

IgG

## Applications

### The Abpromise guarantee

Our **Abpromise guarantee** covers the use of ab17996 in the following tested applications.

The application notes include recommended starting dilutions; optimal dilutions/concentrations should be determined by the end user.

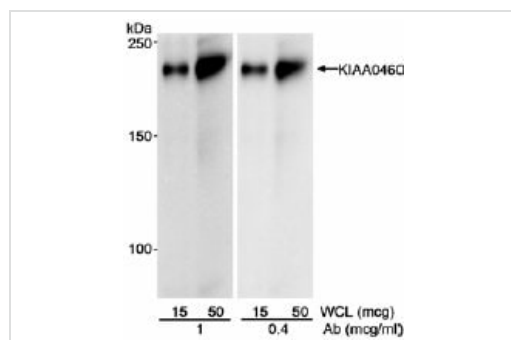
Application	Abreviews	Notes
WB		1/1000 - 1/10000. Detects a band of approximately 200 kDa (predicted molecular weight: 155 kDa).

## Target

### Sequence similarities

Contains 1 CID domain.

## Images



Western blot - Anti-RPRD2 antibody (ab17996)

**Lanes 1-2** : Anti-RPRD2 antibody (ab17996) at 1 µg/ml

**Lanes 3-4** : Anti-RPRD2 antibody (ab17996) at 0.4 µg/ml

**Lanes 1 & 3** : Whole cell lysate from HEK239 cells at 15 µg

**Lanes 2 & 4** : Whole cell lysate from HEK239 cells at 50 µg

**Predicted band size:** 155 kDa

**Observed band size:** 225 kDa

**Exposure time:** 1 minute

Detection of Human RPRD2 by Western Blot.

Samples: Whole cell lysate (15 and 50 µg) from HEK293 cells.

Antibody: Affinity purified goat anti-RPRD2 antibody used at 1 and 0.4 mg/ml.

Detection: Chemiluminescence with an exposure time of 1 minute.

**Please note:** All products are "FOR RESEARCH USE ONLY. NOT FOR USE IN DIAGNOSTIC PROCEDURES"

## Our Abpromise to you: Quality guaranteed and expert technical support

- Replacement or refund for products not performing as stated on the datasheet

- Valid for 12 months from date of delivery
- Response to your inquiry within 24 hours
  
- We provide support in Chinese, English, French, German, Japanese and Spanish
- Extensive multi-media technical resources to help you
- We investigate all quality concerns to ensure our products perform to the highest standards

If the product does not perform as described on this datasheet, we will offer a refund or replacement. For full details of the Abpromise, please visit <https://www.abcam.com/abpromise> or contact our technical team.

### **Terms and conditions**

---

- Guarantee only valid for products bought direct from Abcam or one of our authorized distributors