




Product datasheet

Anti-RPS14 antibody ab174661

★★★★★ [1 Abreviews](#) [2 References](#) [2 Images](#)

Overview

Product name	Anti-RPS14 antibody
Description	Rabbit polyclonal to RPS14
Host species	Rabbit
Tested applications	Suitable for: WB, IP
Species reactivity	Reacts with: Mouse, Human Predicted to work with: Rat, Chicken, Turkey, Xenopus laevis, Drosophila melanogaster, Zebrafish, Xenopus tropicalis 
Immunogen	Synthetic peptide within Human RPS14 aa 101-151. The exact sequence is proprietary. NP_001020242.1 Sequence: GGNRTKTPGPGAQSALRALARSGMKIGRIEDVTPIPSDST RRKGGRGRRL Database link: P62263  Run BLAST with  Run BLAST with
Positive control	Whole cell lysate from 293T, HeLa, Jurkat, Mouse TCMK-1 and Mouse NIH3T3 cells.
General notes	<p>The Life Science industry has been in the grips of a reproducibility crisis for a number of years. Abcam is leading the way in addressing this with our range of recombinant monoclonal antibodies and knockout edited cell lines for gold-standard validation. Please check that this product meets your needs before purchasing.</p> <p>If you have any questions, special requirements or concerns, please send us an inquiry and/or contact our Support team ahead of purchase. Recommended alternatives for this product can be found below, along with publications, customer reviews and Q&As</p>

Properties

Form	Liquid
Storage instructions	Shipped at 4°C. Store at +4°C short term (1-2 weeks). Upon delivery aliquot. Store at -20°C long term. Avoid freeze / thaw cycle.
Storage buffer	pH: 7 Preservative: 0.09% Sodium azide

Constituent: 99% Tris citrate/phosphate

pH 7-8

Purity

Immunogen affinity purified

Clonality

Polyclonal

Isotype

IgG

Applications

The Abpromise guarantee

Our **Abpromise guarantee** covers the use of ab174661 in the following tested applications.

The application notes include recommended starting dilutions; optimal dilutions/concentrations should be determined by the end user.

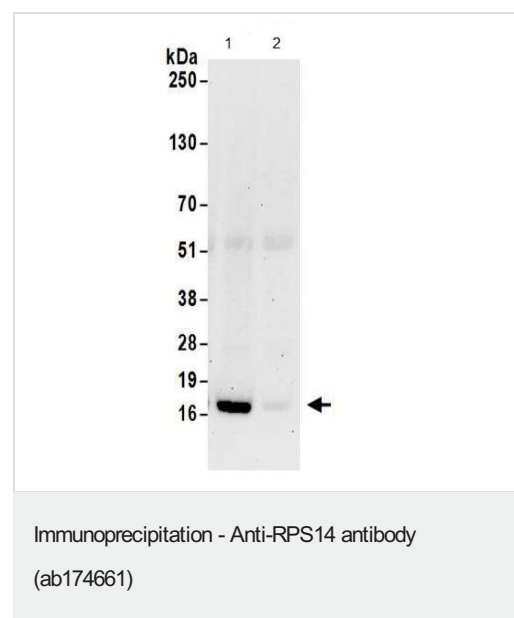
Application	Abreviews	Notes
WB		1/2000 - 1/10000.
IP	★★★★★ (1)	Use at 2-10 µg/mg of lysate.

Target

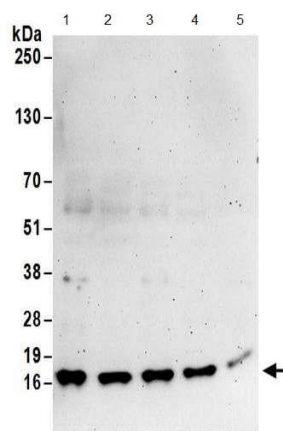
Sequence similarities

Belongs to the ribosomal protein S11P family.

Images



Detection of RPS14 by Western Blot of Immunoprecipitate.



Western blot - Anti-RPS14 antibody (ab174661)

All lanes : Anti-RPS14 antibody (ab174661) at 0.100000001490116 µg/ml

Lane 1 : 293T whole cell lysate

Lane 2 : HeLa whole cell lysate

Lane 3 : Jurkat whole cell lysate

Lane 4 : Mouse TCMK-1 whole cell lysate

Lane 5 : Mouse NIH3T3 whole cell lysate

Lysates/proteins at 50 µg per lane.

Developed using the ECL technique.

Exposure time: 3 minutes

Please note: All products are "FOR RESEARCH USE ONLY. NOT FOR USE IN DIAGNOSTIC PROCEDURES"

Our Abpromise to you: Quality guaranteed and expert technical support

- Replacement or refund for products not performing as stated on the datasheet
- Valid for 12 months from date of delivery
- Response to your inquiry within 24 hours
- We provide support in Chinese, English, French, German, Japanese and Spanish
- Extensive multi-media technical resources to help you
- We investigate all quality concerns to ensure our products perform to the highest standards

If the product does not perform as described on this datasheet, we will offer a refund or replacement. For full details of the Abpromise, please visit <https://www.abcam.com/abpromise> or contact our technical team.

Terms and conditions

- Guarantee only valid for products bought direct from Abcam or one of our authorized distributors