


Product datasheet

Anti-RPS20 antibody [EPR8716] ab133776

Recombinant RabMAb

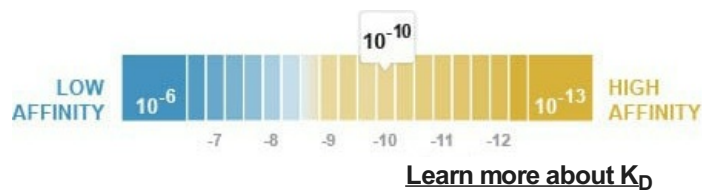
★★★★☆ [2 Abreviews](#) [13 References](#) [5 Images](#)

Overview

Product name	Anti-RPS20 antibody [EPR8716]
Description	Rabbit monoclonal [EPR8716] to RPS20
Host species	Rabbit
Tested applications	Suitable for: Flow Cyt (Intra), WB, IHC-P Unsuitable for: IP
Species reactivity	Reacts with: Human Predicted to work with: Mouse, Rat 
Immunogen	Synthetic peptide. This information is proprietary to Abcam and/or its suppliers.
Positive control	HeLa, A431, HUVEC and Human placenta lysates. Human cervical carcinoma tissue.
General notes	This product is a recombinant monoclonal antibody, which offers several advantages including: <ul style="list-style-type: none"> - High batch-to-batch consistency and reproducibility - Improved sensitivity and specificity - Long-term security of supply - Animal-free production <p>For more information see here.</p> <p>Our RabMAb[®] technology is a patented hybridoma-based technology for making rabbit monoclonal antibodies. For details on our patents, please refer to RabMAb[®] patents.</p>

Properties

Form	Liquid
Storage instructions	Shipped at 4°C. Store at -20°C. Stable for 12 months at -20°C.
Dissociation constant (K_D)	K _D = 2.51 x 10 ⁻¹⁰ M



Storage buffer pH: 7.20

Preservative: 0.01% Sodium azide

Constituents: 9% PBS, 40% Glycerol (glycerin, glycerine), 0.05% BSA, 50% Tissue culture supernatant

Purity	Protein A purified
Clonality	Monoclonal
Clone number	EPR8716
Isotype	IgG

Applications

The Abpromise guarantee Our **Abpromise guarantee** covers the use of ab133776 in the following tested applications.

The application notes include recommended starting dilutions; optimal dilutions/concentrations should be determined by the end user.

Application	Abreviews	Notes
Flow Cyt (Intra)		Use at an assay dependent concentration.
WB	★★★★★ (2)	1/1000 - 1/10000. Predicted molecular weight: 13 kDa.
IHC-P		1/100 - 1/250. Perform heat mediated antigen retrieval with citrate buffer pH 6 before commencing with IHC staining protocol.

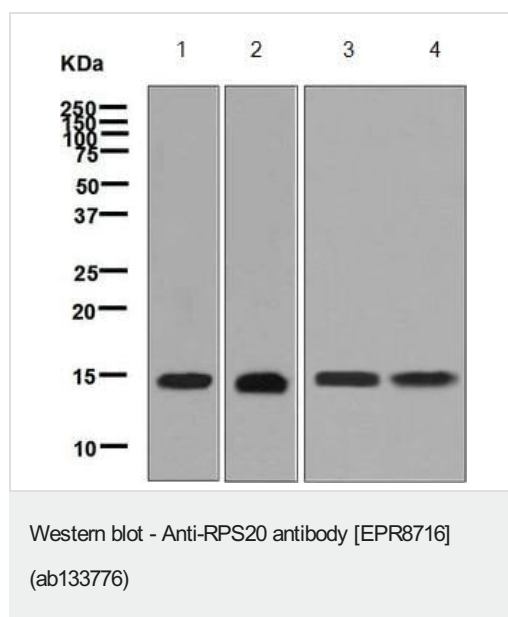
Application notes Is unsuitable for IP.

Target

Sequence similarities Belongs to the ribosomal protein S10P family.

Cellular localization Cytoplasm.

Images



All lanes : Anti-RPS20 antibody [EPR8716] (ab133776) at 1/1000 dilution

Lane 1 : HeLa cell lysate

Lane 2 : A431 cell lysate

Lane 3 : HUVEC cell lysate

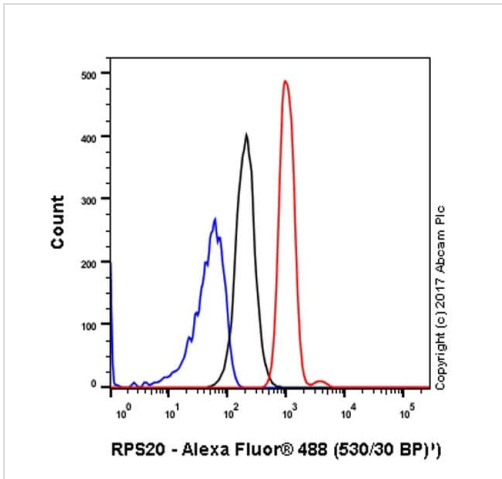
Lane 4 : Human placenta cell lysate

Lysates/proteins at 10 µg per lane.

Secondary

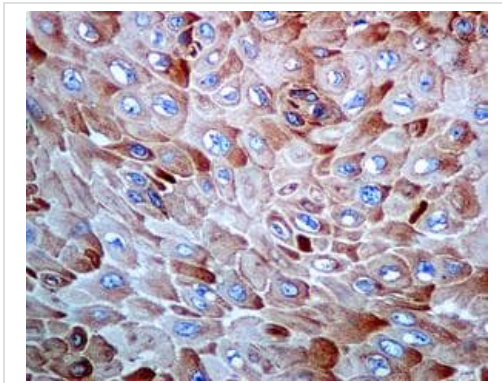
All lanes : HRP-labelled Goat anti-Rabbit at 1/2000 dilution

Predicted band size: 13 kDa



Flow Cytometry (Intracellular) - Anti-RPS20 antibody [EPR8716] (ab133776)

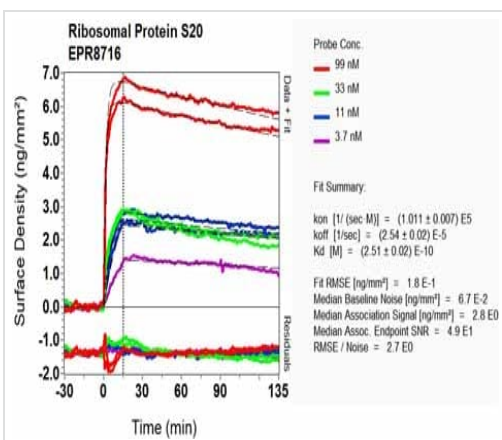
Intracellular Flow Cytometry analysis of A431 cells (human epidermoid carcinoma) labeling RPS20 with purified ab133776 at 1/250 dilution (10ug/ml) (red). Cells were fixed with 4% paraformaldehyde and permeabilised with 90% Methanol. A Goat anti rabbit IgG (Alexa Fluor® 488) (**ab150077**) (1/2000 dilution) was used as the secondary antibody. Rabbit monoclonal IgG (Black) (**ab172730**) was used as the isotype control, cells without incubation with primary antibody and secondary antibody (Blue) were used as the unlabeled control.



Immunohistochemistry (Formalin/PFA-fixed paraffin-embedded sections) - Anti-RPS20 antibody [EPR8716] (ab133776)

Immunohistochemical analysis of paraffin-embedded human cervical carcinoma tissue labelling RPS20 using ab133776 at 1/100 dilution

Perform heat mediated antigen retrieval with citrate buffer pH 6 before commencing with IHC staining protocol.



OI-RD Scanning - Anti-RPS20 antibody [EPR8716] (ab133776)

Equilibrium disassociation constant (K_D)

Learn more about K_D

[Click here to learn more about \$K_D\$](#)

Why choose a recombinant antibody?



Research with confidence
Consistent and reproducible results



Long-term and scalable supply
Recombinant technology



Success from the first experiment
Confirmed specificity



Ethical standards compliant
Animal-free production

Anti-RPS20 antibody [EPR8716] (ab133776)

Please note: All products are "FOR RESEARCH USE ONLY. NOT FOR USE IN DIAGNOSTIC PROCEDURES"

Our Abpromise to you: Quality guaranteed and expert technical support

- Replacement or refund for products not performing as stated on the datasheet
- Valid for 12 months from date of delivery
- Response to your inquiry within 24 hours
- We provide support in Chinese, English, French, German, Japanese and Spanish
- Extensive multi-media technical resources to help you
- We investigate all quality concerns to ensure our products perform to the highest standards

If the product does not perform as described on this datasheet, we will offer a refund or replacement. For full details of the Abpromise, please visit <https://www.abcam.com/abpromise> or contact our technical team.

Terms and conditions

- Guarantee only valid for products bought direct from Abcam or one of our authorized distributors